



SIGNATUREGLOBAL HOMES PVT. LTD. | CIN NO.: U70100DL2008PTC176641
REGD. OFFICE: UNIT NO. 1309, 13TH FLOOR, DR. GOPAL DAS BHAWAN, 28 BARAKHAMBA ROAD,
CONNAUGHT PLACE, NEW DELHI-110001
CORP. OFFICE: GROUND FLOOR, TOWER-A, SIGNATURE TOWER, SOUTH CITY-1, GURUGRAM, HARYANA- 122001
www.signatureglobal.in

DISCLAIMER:

"PROMOTER URGES EVERY APPLICANT TO INSPECT THE PROJECT SITE AND SHALL NOT MERELY RELY UPON OR TO BE INFLUENCED BY ANY ARCHITECTURAL IMPRESSION, PLAN OR SALES BROCHURE AND THEREFORE REQUESTED TO MAKE PERSONAL JUDGMENT PRIOR TO SUBMITTING AN APPLICATION FOR ALLOTMENT. THE IMAGES SHOWN HERE ARE INDICATIVE OF DESIGN AND FOR ILLUSTRATION PURPOSES ONLY. FURTHER THE ACTUAL DESIGN MAY VARY IN FIT AND FINISHED FROM THE ONE DISPLAYED ABOVE. PROJECT DETAILS / SPECIFICATIONS CAN ALSO BE ACCESSED AT THE OFFICE OF HARYANA REAL ESTATE REGULATORY AUTHORITY WEBSITE [HTTPS://HARYANARERA.GOV.IN/](https://haryanarera.gov.in/). JOURNEY TIME SHOWN, IF ANY IS BASED UPON GOOGLE MAPS WHICH MAY VARY AS PER TRAFFIC AT RELEVANT POINT OF TIME.

RATE MENTIONED DOES NOT INCLUDE GST AND OTHER STATUTORY CHARGES IF APPLICABLE, T & C APPLY. 1 SQ. MT = 10.7639 SQ. FT."

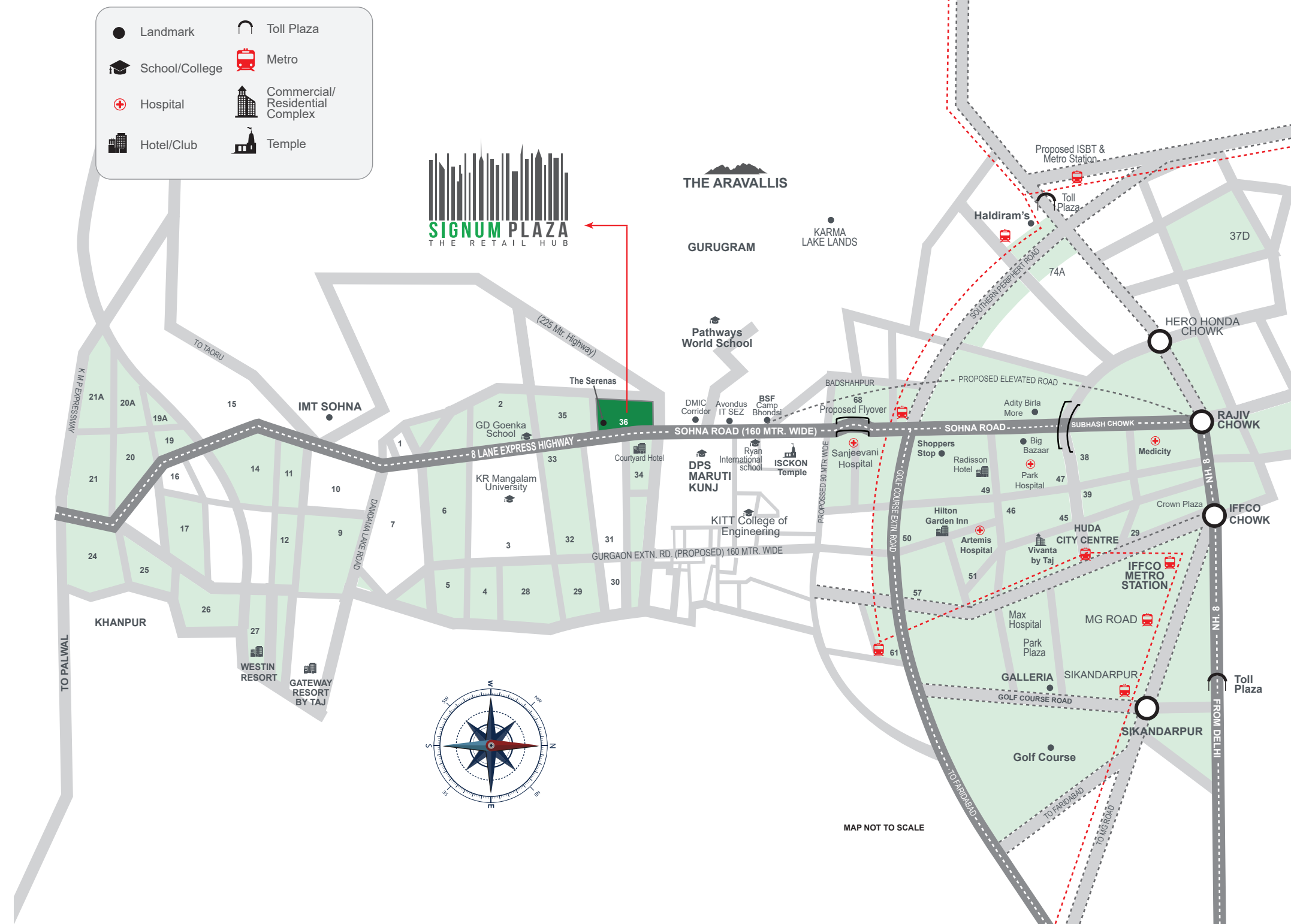
HARERA: 43 OF 2019 DATED 01.08.2019 / 44 OF 2019 DATED 01.08.2019

BUSINESS ASSOCIATES:



RETAIL HUB AT
SECTOR 36, SOHNA SOUTH OF GURUGRAM

LOCATION MAP



LOCATION ADVANTAGES



More Than 6 Reputed Schools within
15 km Radius



Sohna Elevated Road (under construction)



Hotels in 15 km Radius



11 Multiplex Screens to be Functional Soon



Office Complexes and Business Hubs in the Neighborhood



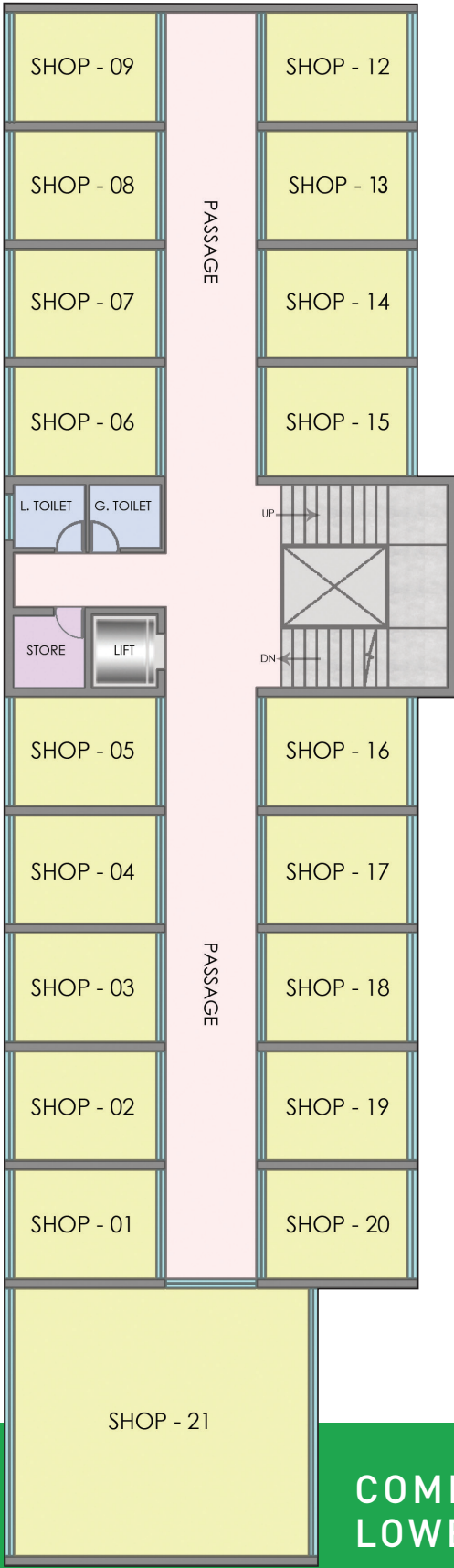
Adventure Park in the Vicinity



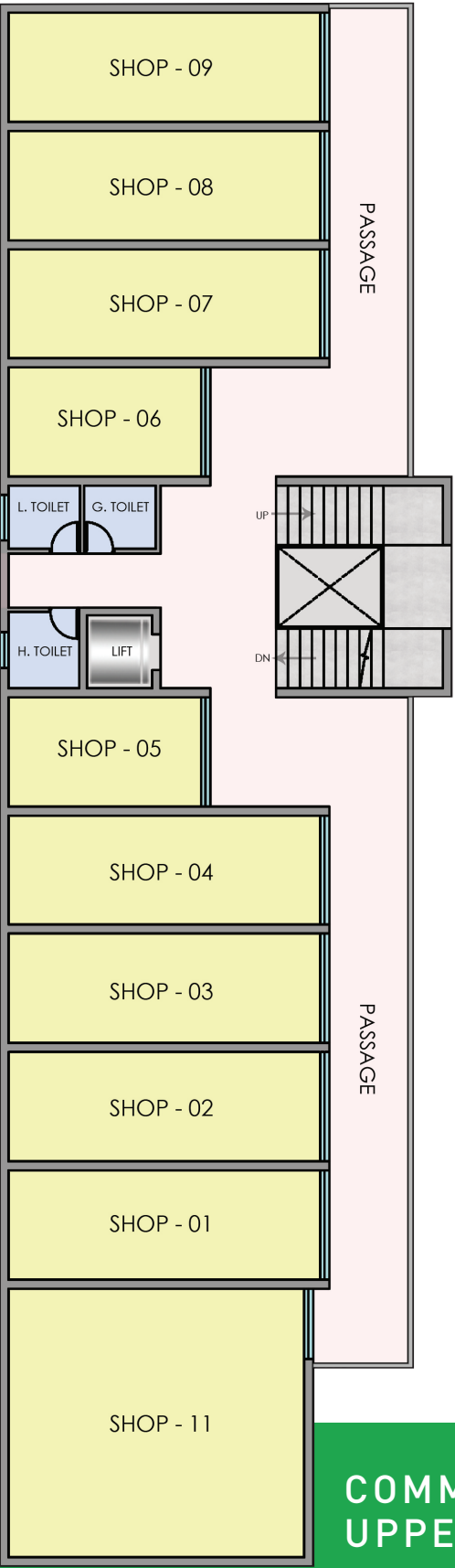
Lush Green Environment



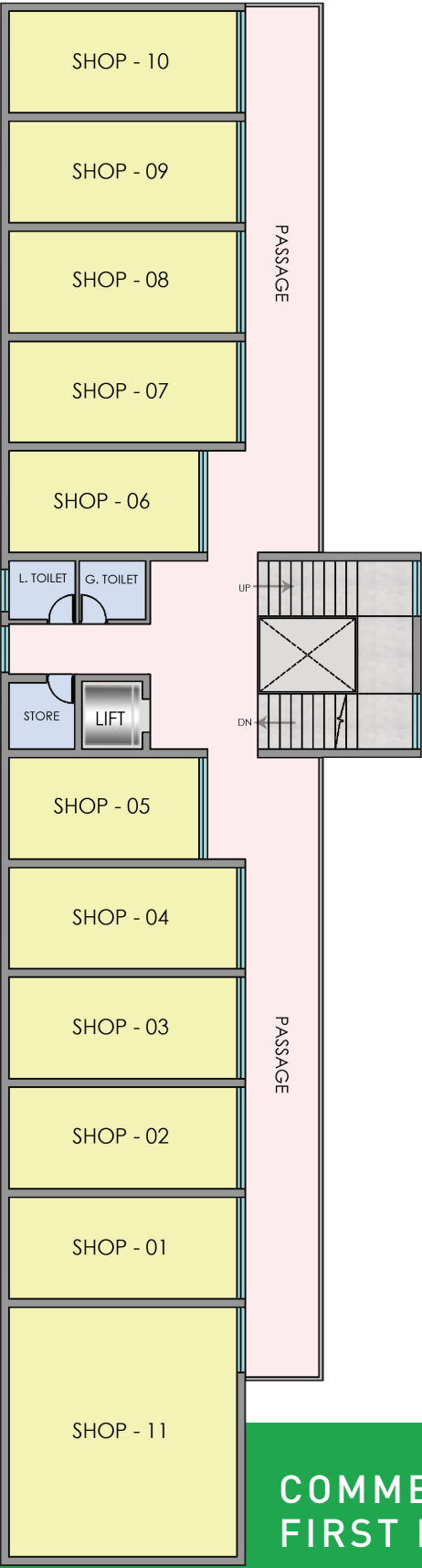
FLOOR PLAN



COMMERCIAL - 2A
LOWER GROUND FLOOR

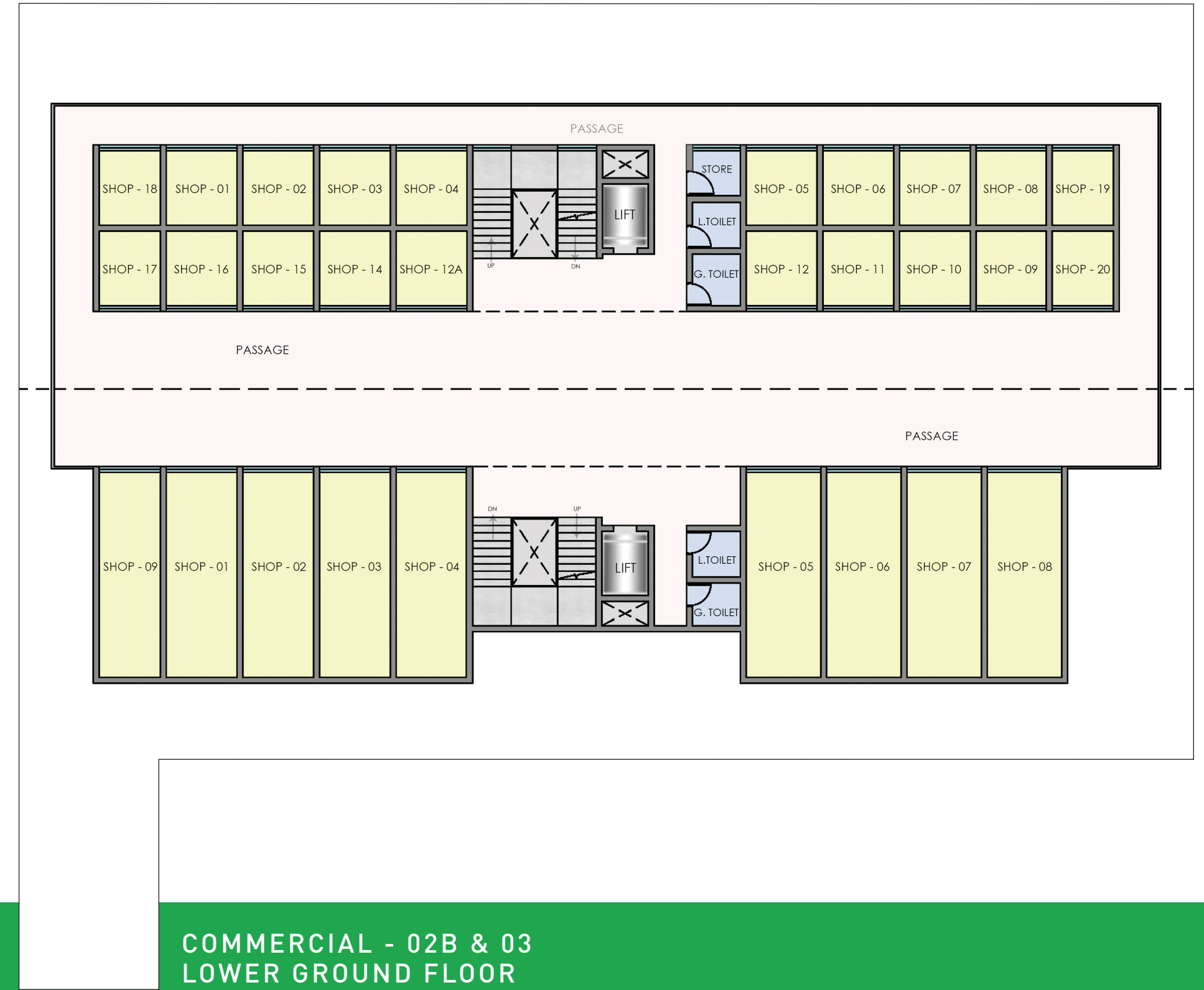
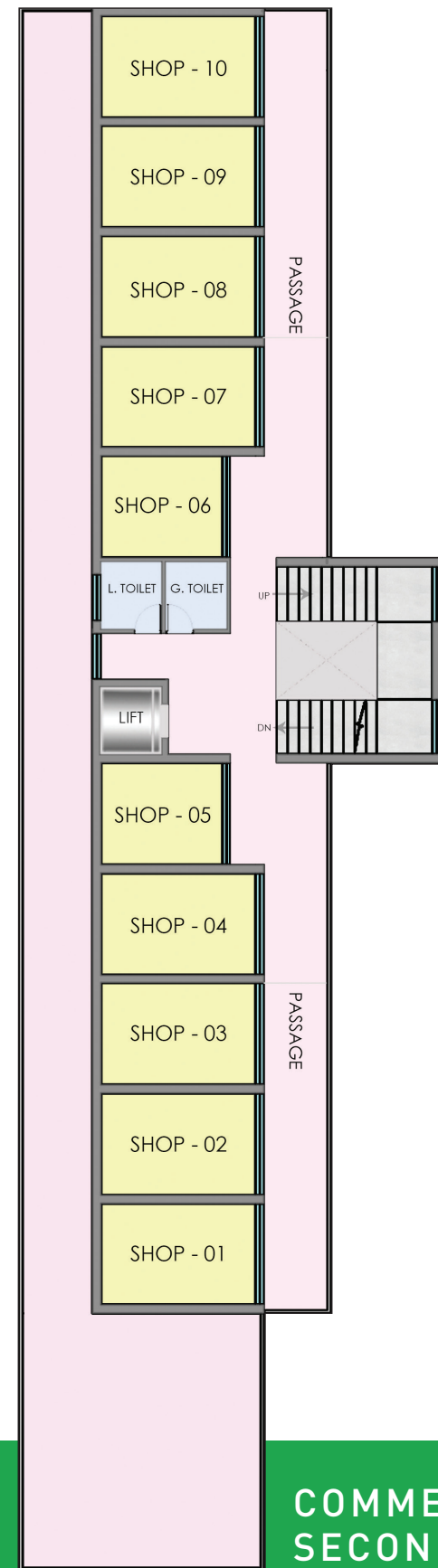


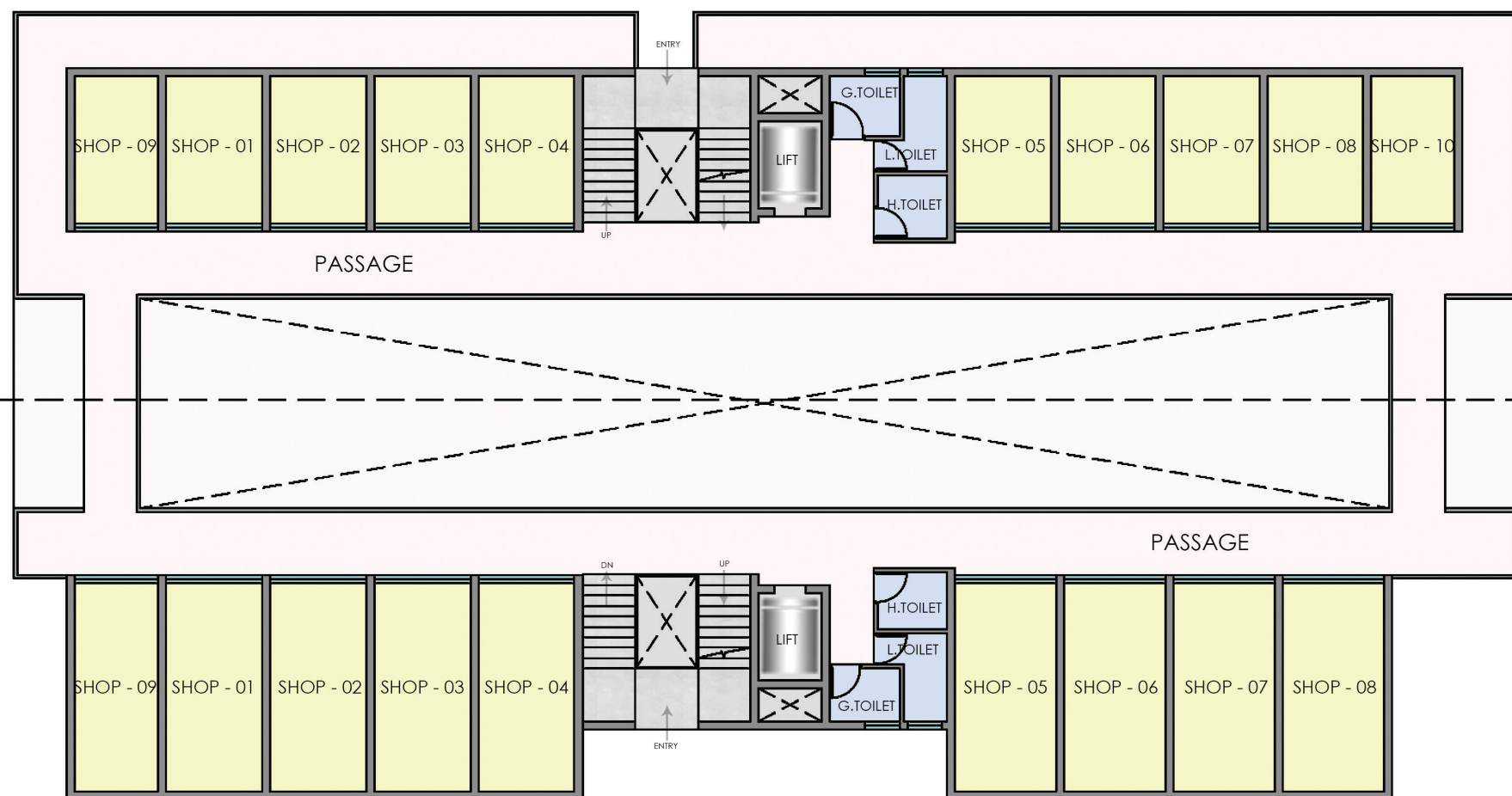
COMMERCIAL - 2A
UPPER GROUND FLOOR



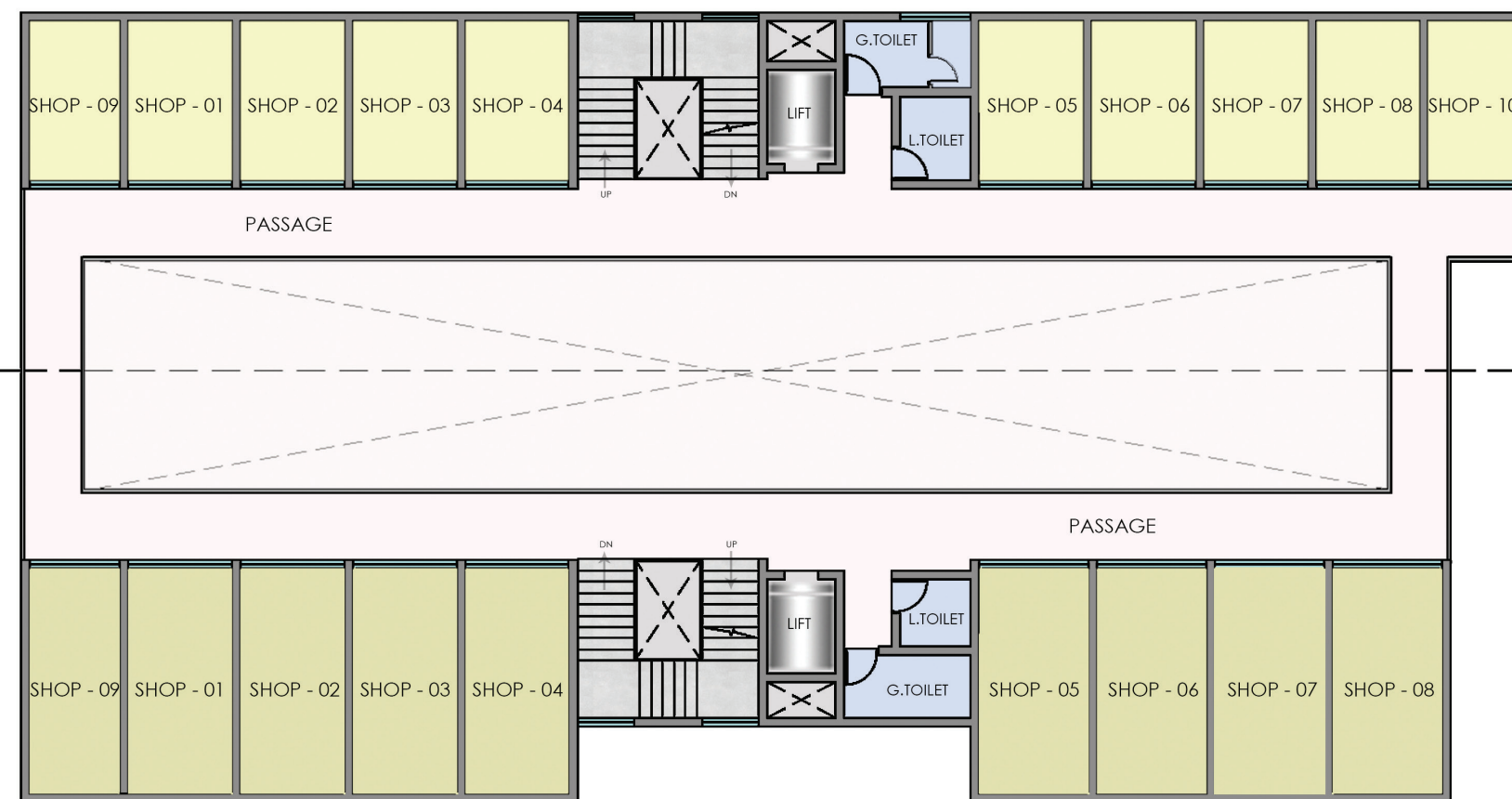
COMMERCIAL - 2A
FIRST FLOOR



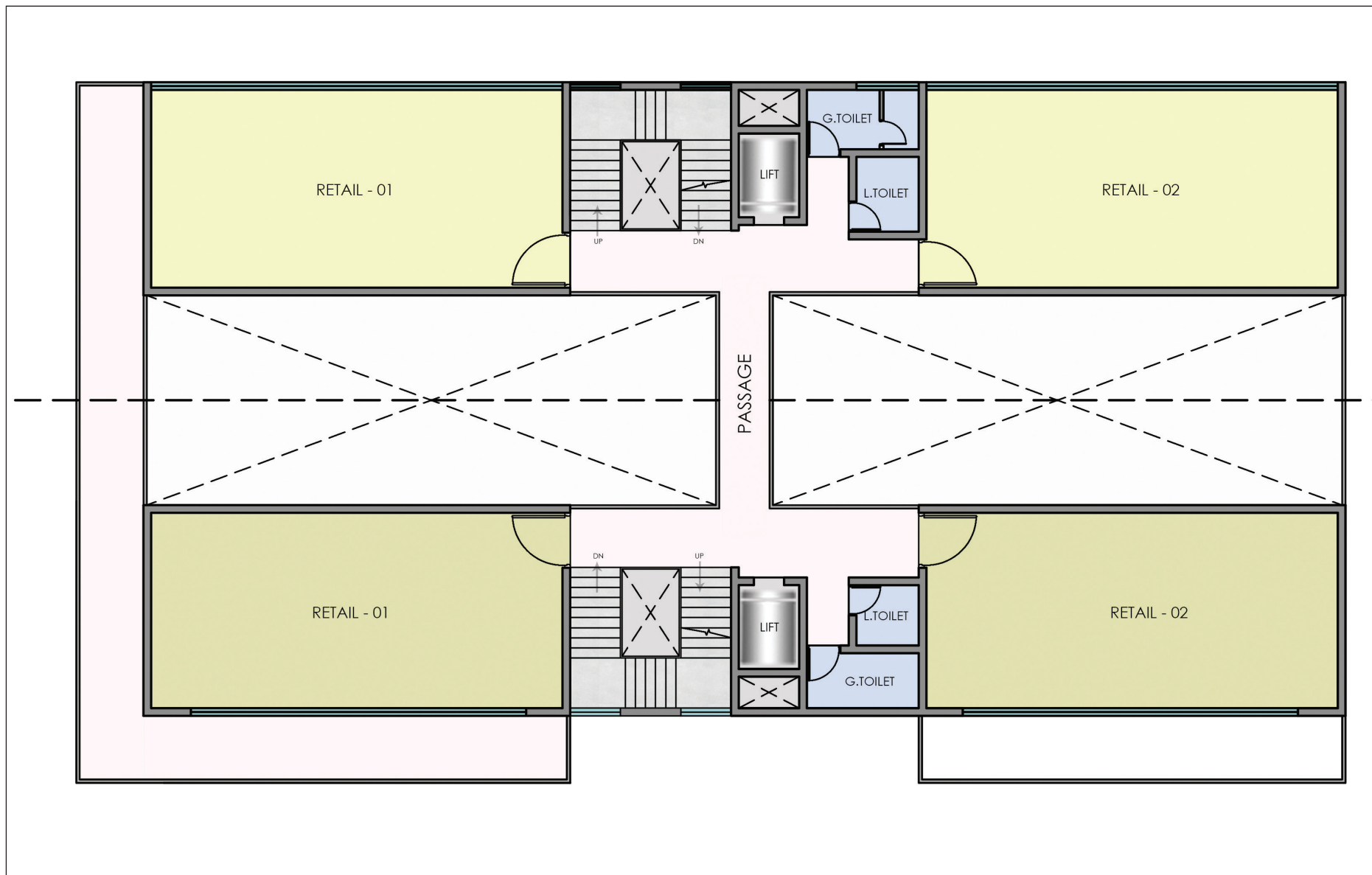




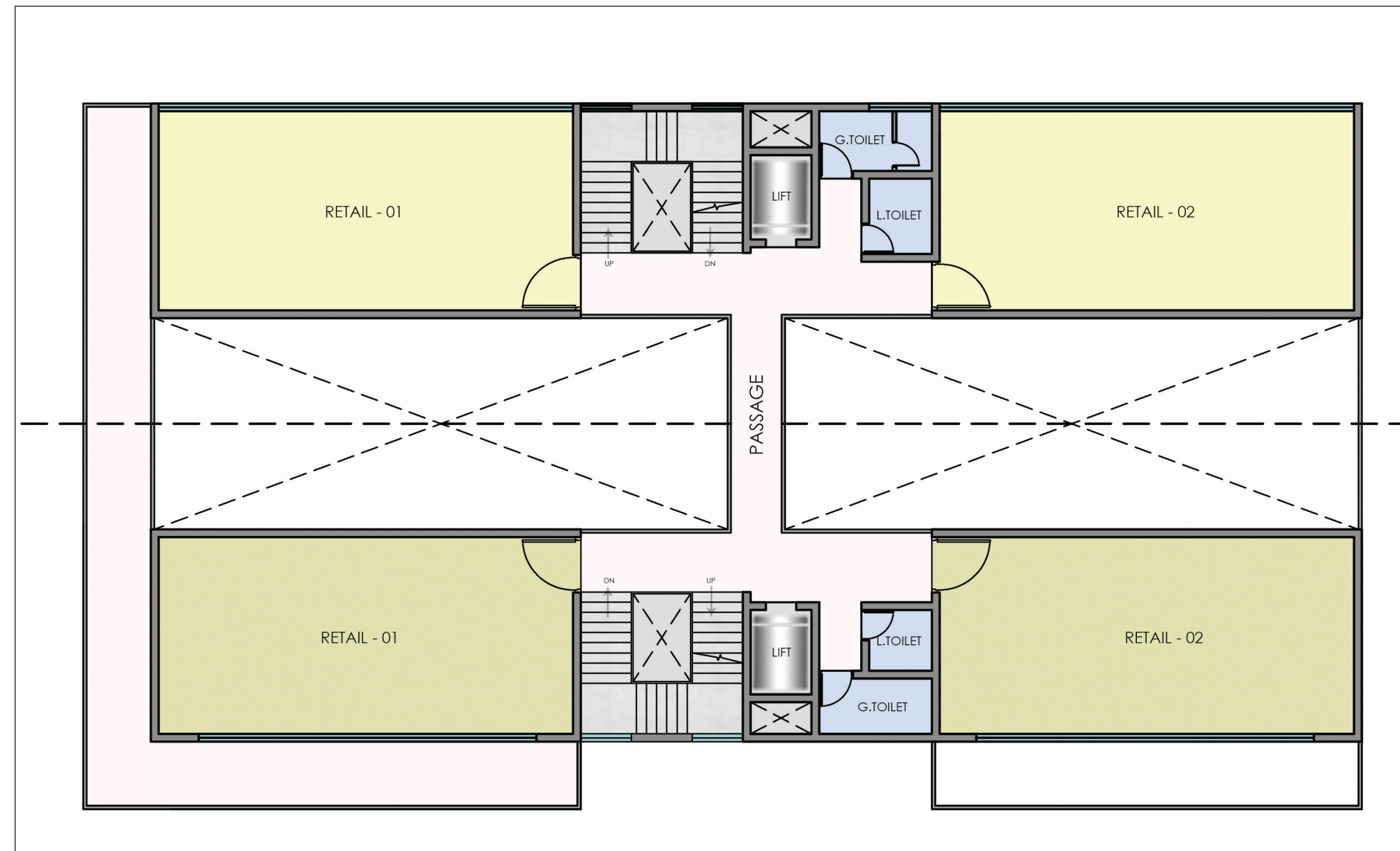
COMMERCIAL - 02B & 03
UPPER GROUND FLOOR



COMMERCIAL - 02B & 03
FIRST FLOOR



COMMERCIAL - 02B & 03
SECOND FLOOR



COMMERCIAL - 02B & 03
THIRD FLOOR