

# *The Sky Suites*

# 30

LIMITED EDITION PENTHOUSES

---

# THE SKY LIVING

---

Grand Spa Sky Suites are reflection of the fine, subtle tastes of the discerning few. One of the only residential complex with largest central park in the vicinity. It offers some of the finest homes, which make living here a pleasurable experience. A true landmark of luxury, Sky Suites are an imposing presence in the area and offers range of amenities, which have been specially designed for those who like to live unequal.







ACTUAL IMAGE

---

A PARADISE FOR CONNOISSEURS OF  
THE EXCEPTIONAL

---



ACTUAL IMAGE

---

IMMERSE THE PERPETUAL BLUE SKY

---





---

## REFLECTION OF TOMORROW

---



---

## WAKE UP TO POLISHED MORNINGS

---





ACTUAL IMAGE

---

WHERE THE WORLD WE LIVE IN AND THE  
WORLD OF NATURE INTERSECT THROUGH  
FLUID SPATIAL DESIGN

---



ACTUAL IMAGE



# LOCATION THAT BEFITS YOUR STATURE



- Bestech City (Future Development)
- Park View Sanskruti
- Park View Ananda
- Upcoming Bestech Commercial
- 25 minutes from IGI Airport
- 5 minutes from upcoming metro line
- 1.5 Kms from NH 8
- Hospital
- School / Play School

# SPECIFICATIONS

## LIVING ROOM

Walls: *Acrylic Emulsion Paint on POP Punning*  
Floor: *Imported Marble flooring*

Doors: *Hardwood door frame with European style flush panel*

Windows/Glazing: *Anodized/Powder coated Aluminium*

***VRV Air Conditioning and False Ceiling in Living & Dining Room***

## BEDROOMS

Walls: *Acrylic Emulsion Paint on POP Punning*  
Floor: *Laminated Imported Wooden Flooring*

Doors: *Hardwood door frame with European style flush panel*

Windows/Glazing: *Anodized/Powder coated Aluminium*

***Split Air Conditioning in all other Bed Rooms (Invertor AC)***

***Premium wardrobe in all Bed Rooms***

## KITCHEN

Walls: *2' high ceramic tiles above Granite counter rest painted*

Floor: *Ceramic tiles*

Doors: *Hardwood door frame with European style flush panel*

Windows/Glazing: *Anodized/Powder coated Aluminium*

***Other: Kitchen with granite counters, stainless steel sink, Hob, Chimney & Microwave oven***

## TOILET

Walls: *Ceramic tiles & Oil bound distemper*  
Floor: *Ceramic Tiles*

Doors: *Hardwood door frame with European style flush panel*

Windows/Glazing: *Anodized/Powder coated Aluminium*

*Other: Marble counters, Single Lever CP fittings Grohe, Glass shower partition, Chinaware of Cera*

***Shower Panel & Bath Tub / Jacuzzi in Master Toilet***

## BALCONIES

Floor: *Anti-skid Ceramic tiles*

## SERVANT / UTILITY ROOM

Walls: *Oil bound distemper*

Floor: *Ceramic tiles*

Doors: *Hardwood door frame with flush panel*  
Windows/Glazing *Anodized/Powder coated Aluminium*

## LOBBY

*Combination of Granite / Tiles / Acrylic Emulsion / Textured Paint*

## OTHER

***Staircase Railing inside the Sky Suites – Wood & Glass***

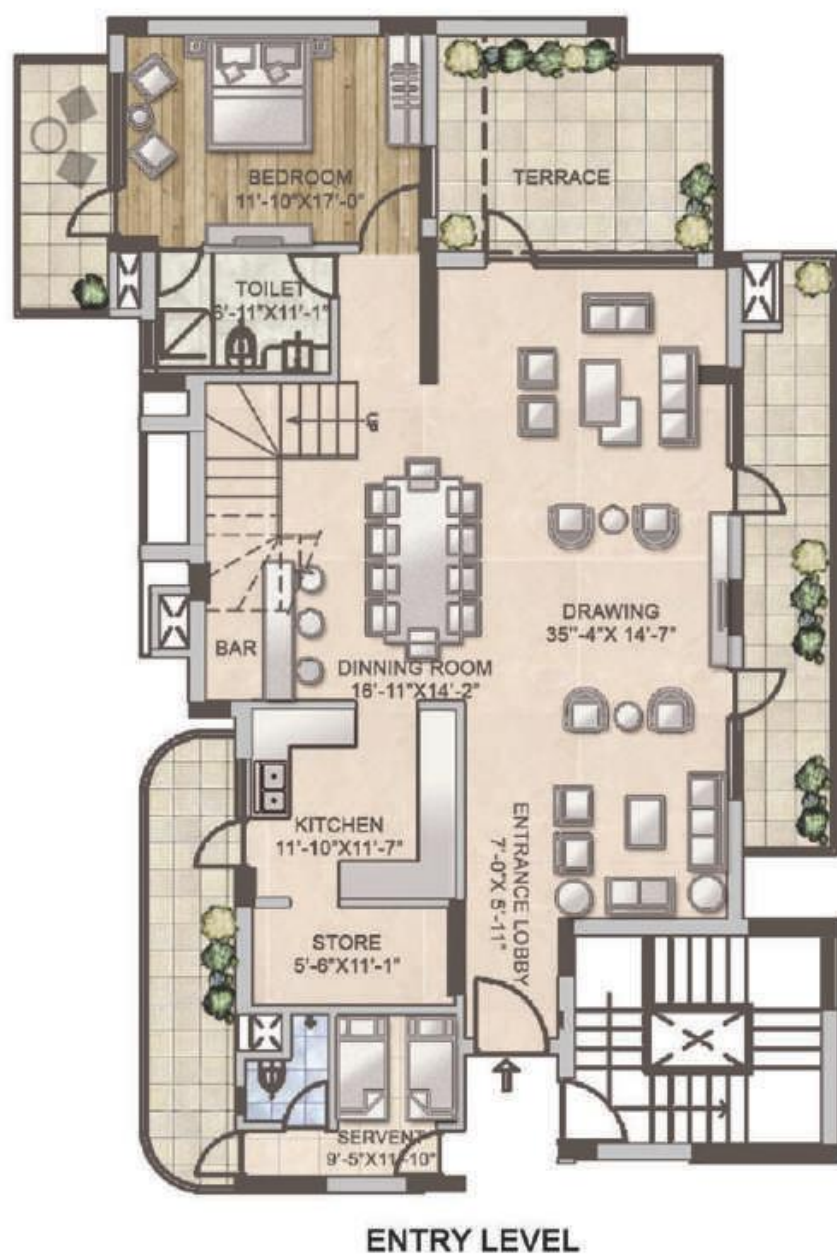


ACTUAL IMAGE



## 4 BEDROOM PENTHOUSE, TYPE - 1(A)

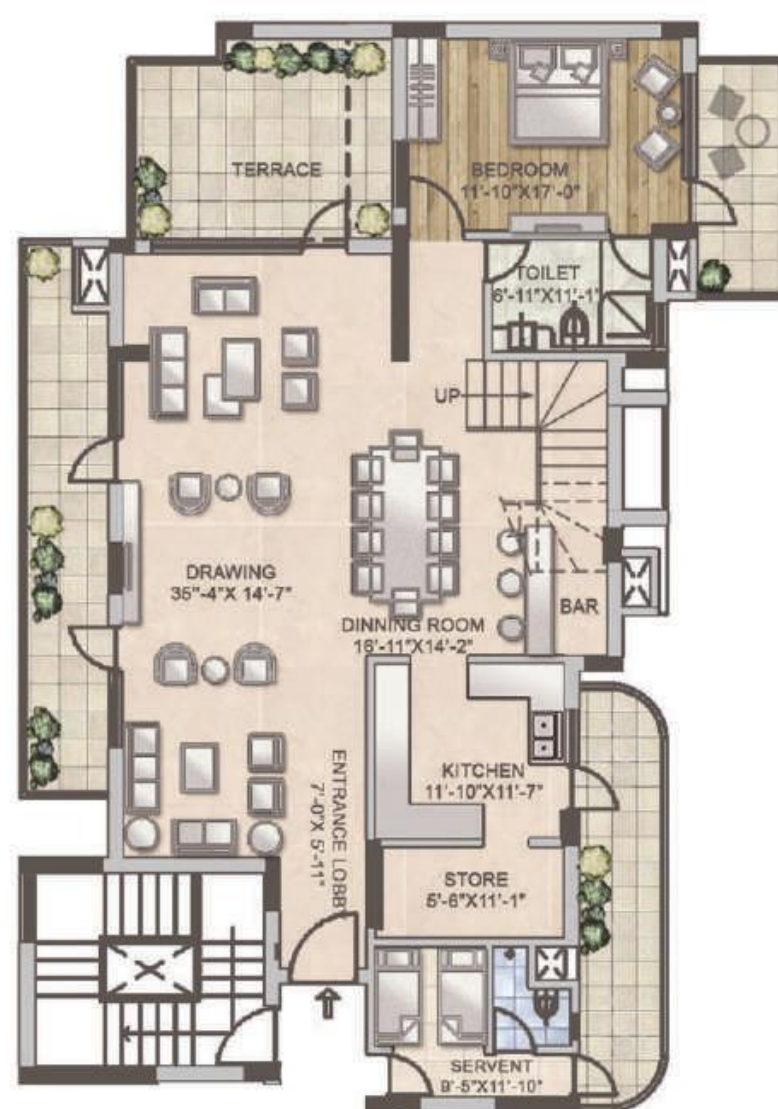
Super Area 4486 Sq.ft. + 1681 Sq.ft. Terrace





## 4 BEDROOM PENTHOUSE, TYPE - 1(B)

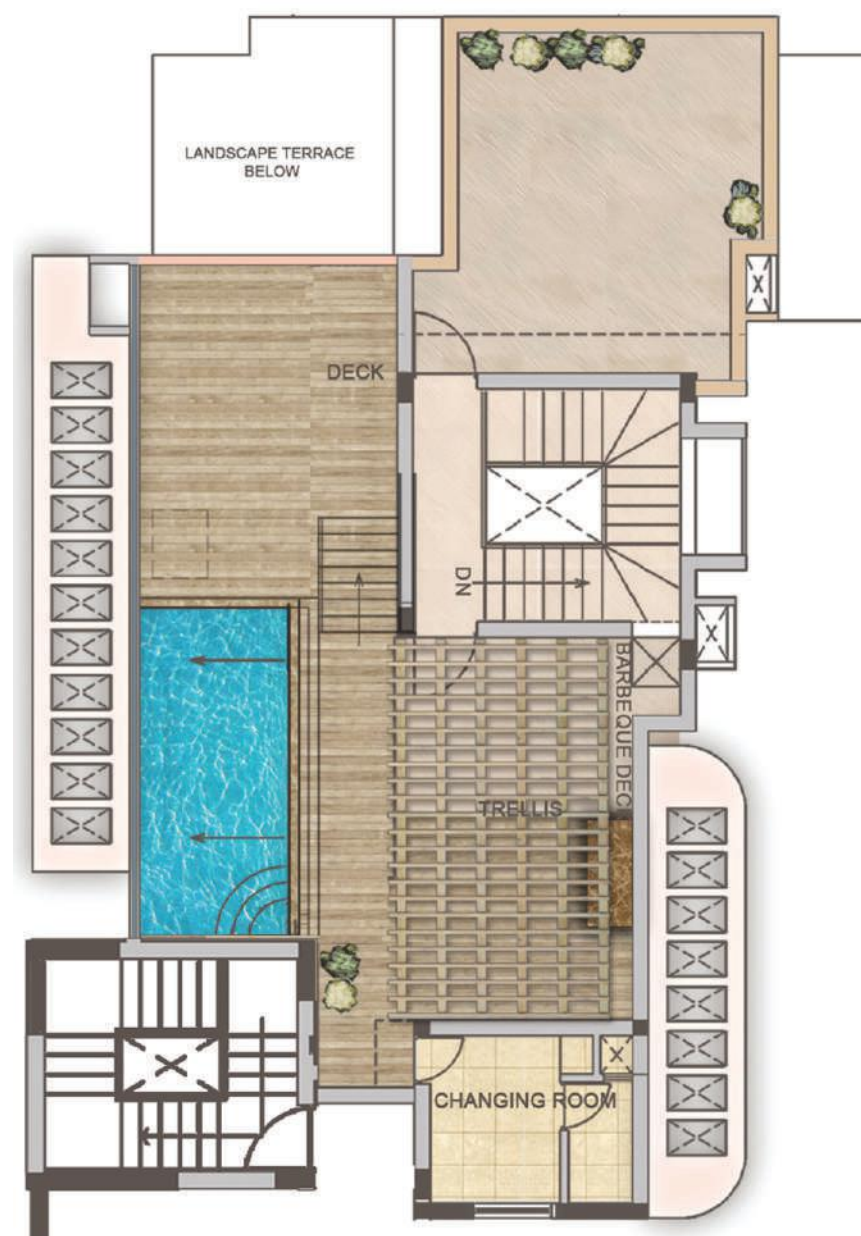
Super Area 4452 Sq.ft. + 1475 Sq.ft. Terrace



ENTRY LEVEL



LEVEL 1

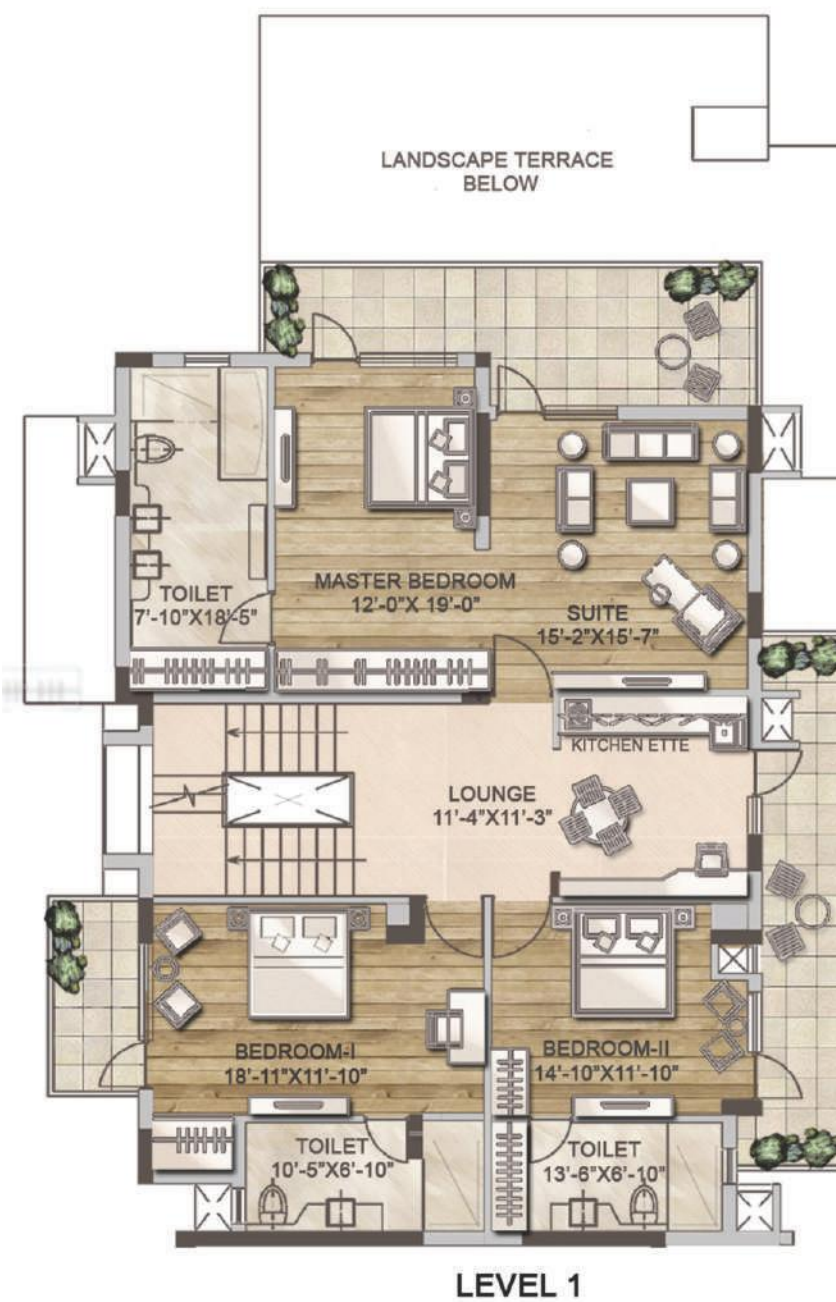


TERRACE LEVEL



## 4 BEDROOM PENTHOUSE, TYPE - 2

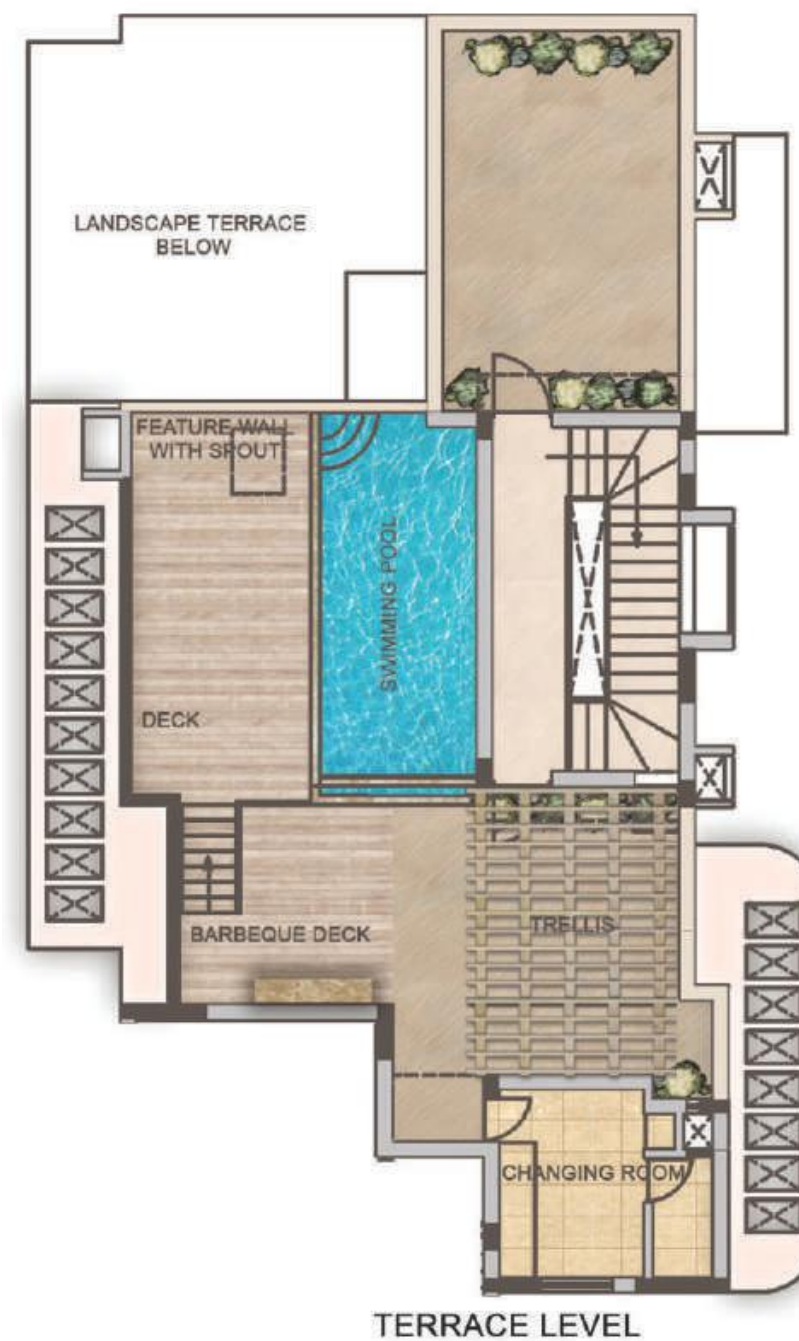
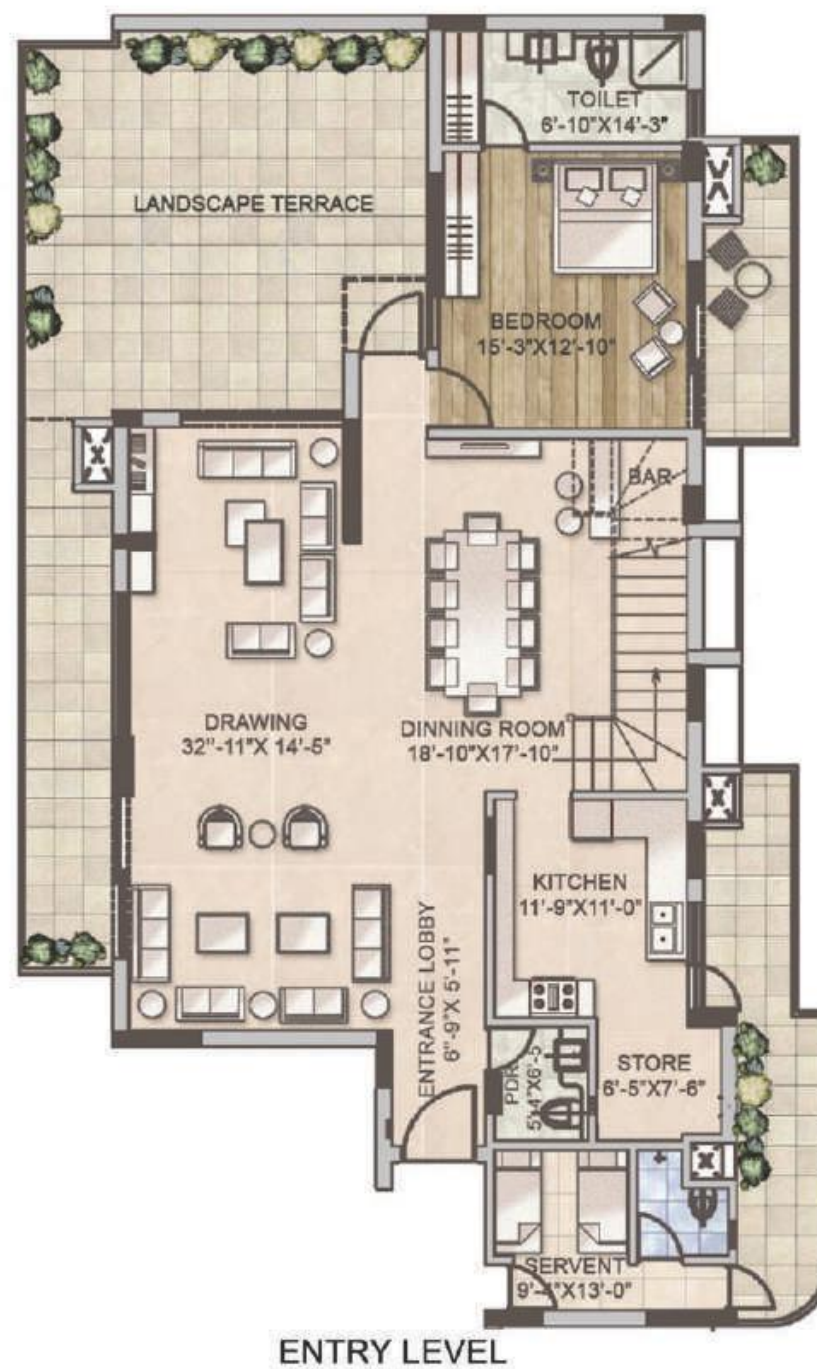
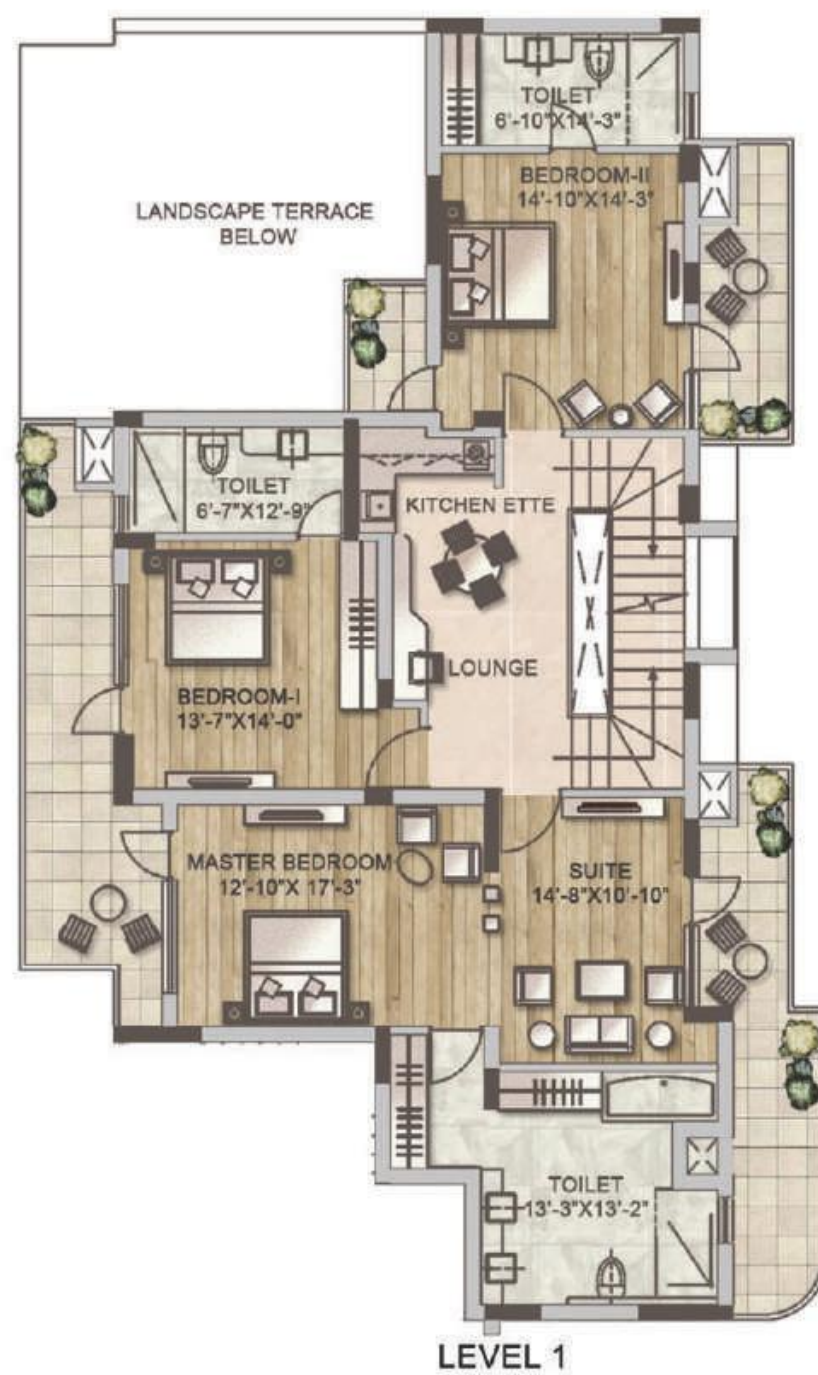
Super Area 4807 Sq.ft. + 2247 Sq.ft. Terrace





## 4 BEDROOM PENTHOUSE, TYPE - 3 (A)

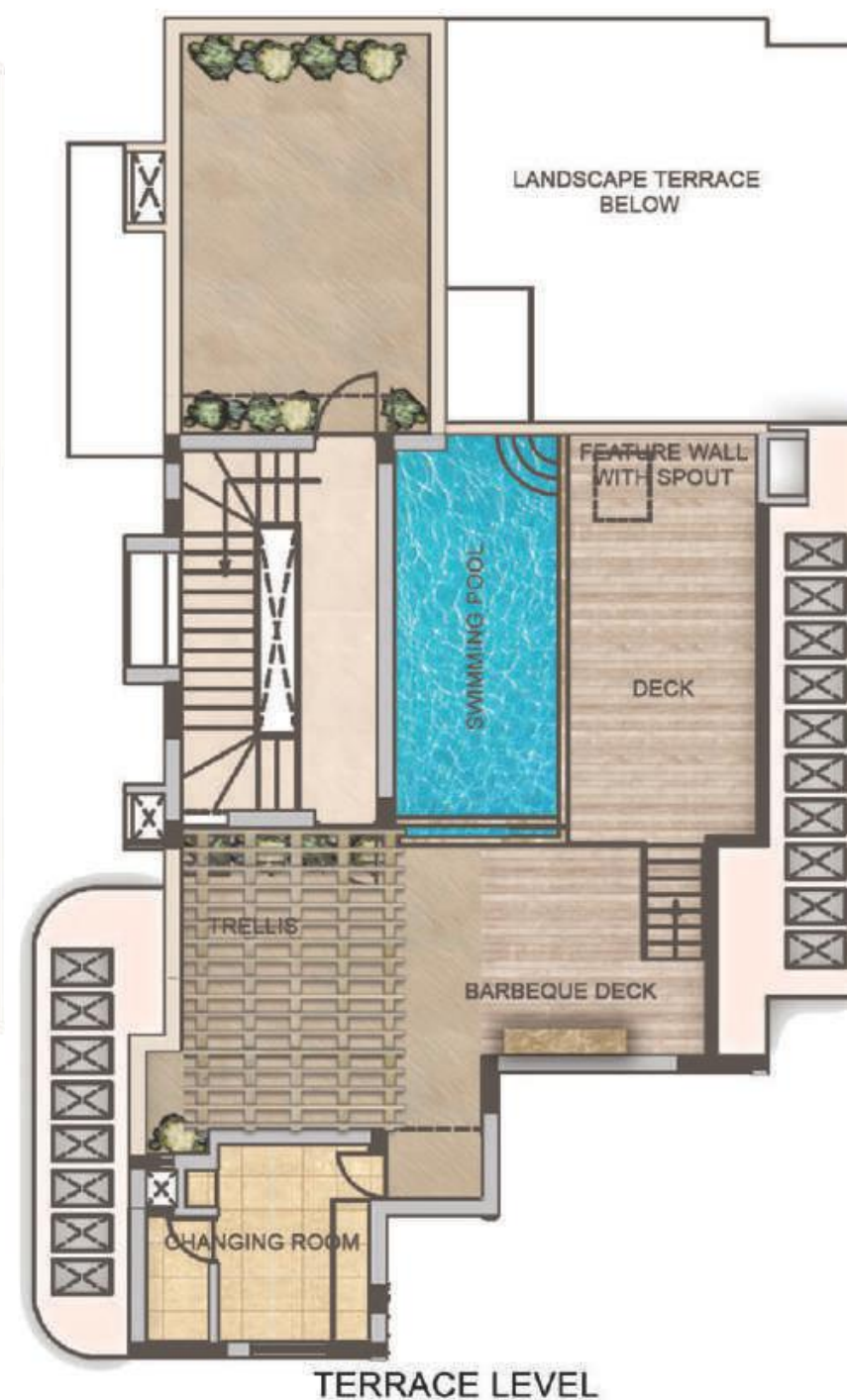
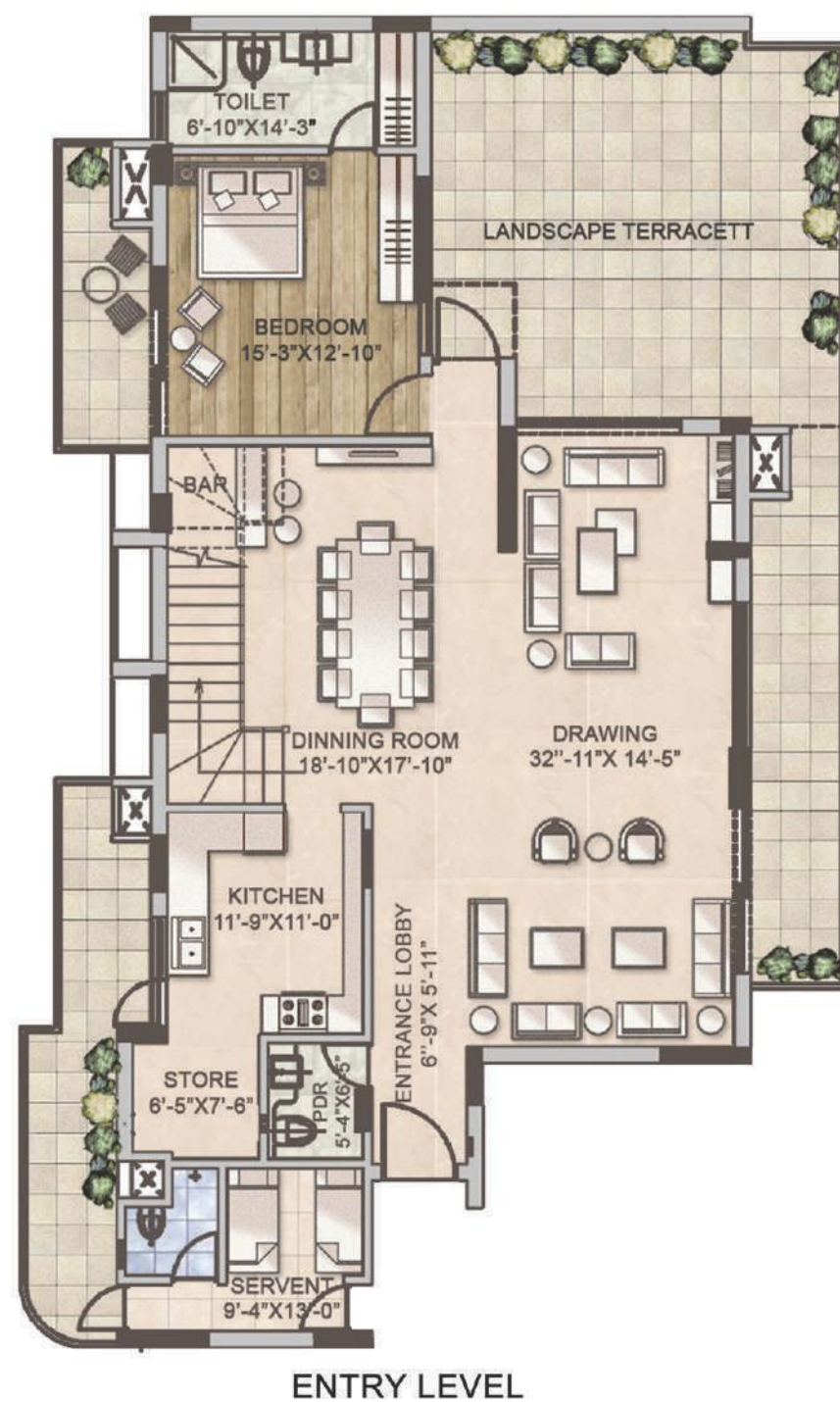
Super Area 4897 Sq.ft. + 1819 Sq.ft. Terrace





## 4 BEDROOM PENTHOUSE, TYPE - 3 (B)

Super Area 4935 Sq.ft. + 1991 Sq.ft. Terrace





## SITE PLAN



### TOWER NAMES

A ASTER | B BELVA | C CASPIA | D DAISY | E ERICA | F FERN | G GALAX | H HAZEL | I IVY | S SPA SIGNATURE

### FACILITIES

1 CLUB / MULTI - PURPOSE HALL / CAFETERIA | 2 POOL | 3 KID'S POOL | 4 BASKETBALL COURT | 5 TENNIS COURT | 6 BADMINTON COURT | 7 CRICKET NET | 8 SKATING RINK | 9 AMPHITHEATER  
10 KID'S PLAY AREA | 11 SAND PITS | 12 JOGGING & WALKING TRACK | 13 YOGA HUTS | 14 PETS GARDENS