



THE  SPEN

ABOVE IT ALL



THE  SPEN
ABOVE IT ALL

Varied with myriad hues
Splendid & inspiring
Magnificent and grand like none
Ever giving and comforting
Just like Aspen
In other words, above it all

Whiteland Corporation : Elevating Lifestyle

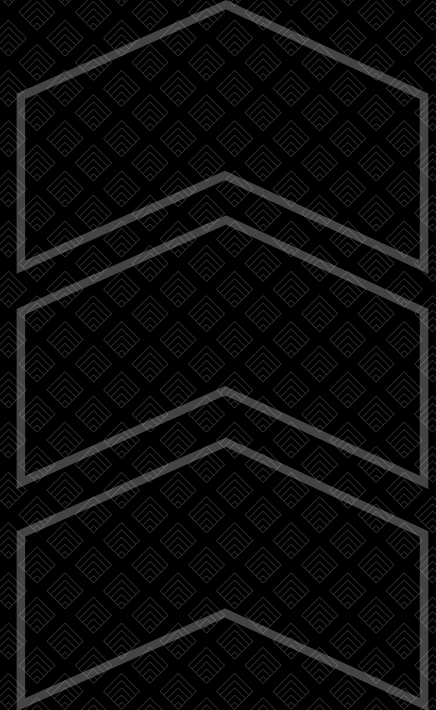
Since its inception, Whiteland Corporation has been re-defining the real-estate vertical.

Harnessing its rock-solid experience and the desire to go that extra mile, it has been in relentless pursuit of offering buyers a luxurious living and lifestyle.

Embedded in its core principles; trust, commitment and transparency, from design to architecture, sustainability to amenities, the company has single-handedly created a new buyer set looking for an elevated lifestyle.

Headquartered in Gurugram, the company is committed to deliver an accentuated lifestyle, creating a well-defined eco-system and giving buyers more than they expect.

Global Outlook – Indian Values



You, Our Inspiration

We understand your latent desire to be caressed by luxury, to lead an inspired living.

Following the same, we decided crafting a world that echoes your dreams, desires and aspirations, a world offering unblemished living and momentous experiences...

A life above it all

above it all



City Spirit - Aravalli Serenity

What good is a world if it does not pamper you with unapologetic lifestyle and choices?

Presenting, The Aspen, a uniquely crafted luxurious offering.

With curated amenities, end-to-end extravagance, the experience is heightened by the pristine serenity of the imposing Aravallis.

Nestled in the most promising sector of Gurugram, Sector 76, it offers a lifestyle that is unheard of & truly inspiring.



Amidst Throb & Action

Claiming a majestic presence on the SP-1, with its proximity to NH-8, Cloverleaf flyover and Dwarka expressway. It keeps you well-connected.

It also offers you a vast expansive, unadulterated view of the coveted Leopard Trail as well as of Gurugram's skyline.



- 21 acres of sustainable living
- 8 majestic towers
- Two to a core apartment
- 1 lakh sq feet of world-class clubhouses (approx)
- World-class amenities
- Vastu-compliant architecture
- Magnificent view of the Aravallis
- Expansive view of the Leopard Trail



Configurations

Plethora Of Activities Heightened Living



Meditation Deck
Linear Park
Cycling Track

Basketball Court
Tennis Court
Cricket Net
Badminton Court
Squash Court
Indoor Games
Multi-Functional Gymnasium

Themed Restaurant
Banquet Hall
Business Centre
Retail
Cafes
Library

Senior Citizen Zone
Kid's Play Area
Yoga Decks
Pet's Play Zone
Lap Pool
Leisure Pool
Exotic Waterbodies





Splendour + Entertainment + Lifestyle

The 3x Edge

Seldom does a world offer you as many choices as The Aspen.

For you, it presents two world-class club facilities that define affluence and lifestyle.

Aurora; with a sunken pool it sets the stage for unparalleled pampering.

Sol; extending its aura and charm via its curated services & gastronomical delight.

Choose one, or both to suit your moods.





Aurora

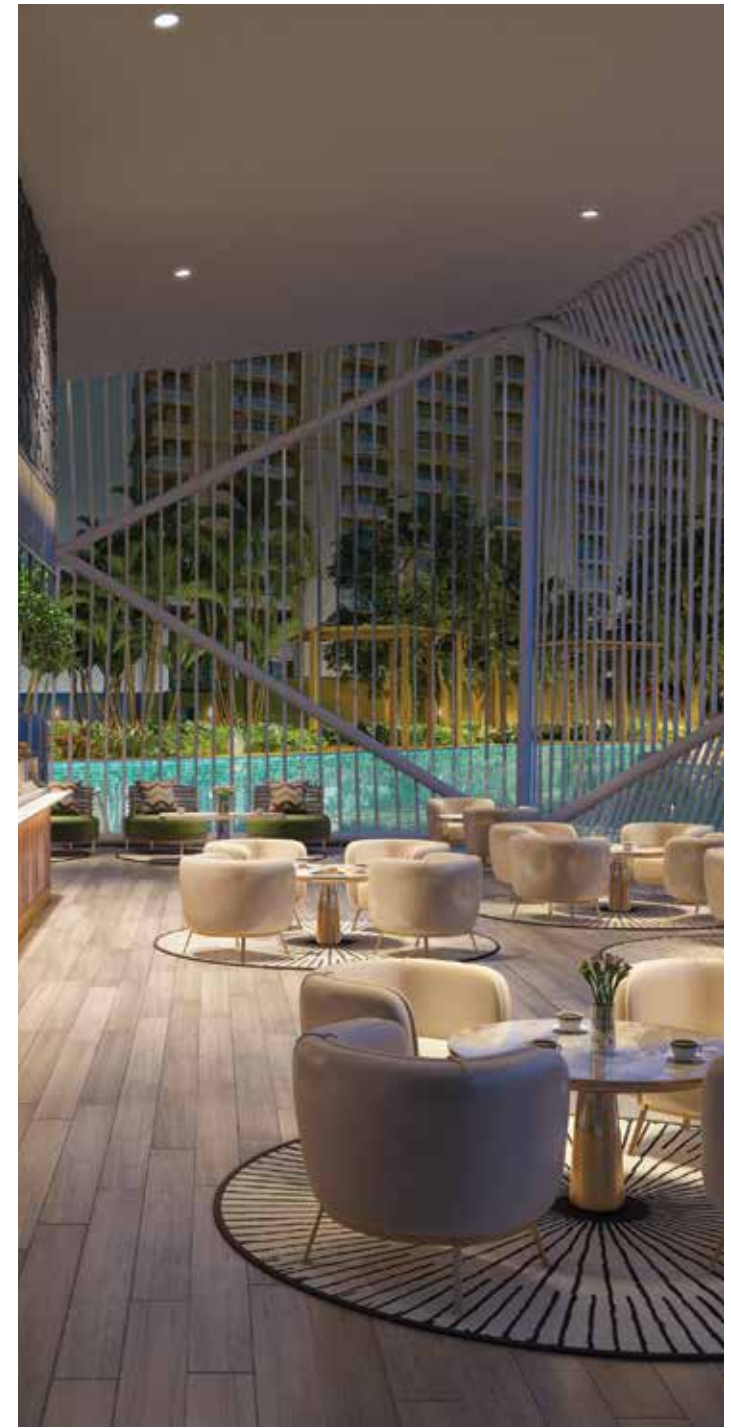
Varied Facilities, Unmatched Magnificence



Extravagantly Luxurious

Amenities

Multi-functional Gym Pool Side Cafe & Library Spa





Sol

Sunken Architecture & Serenading Waterbodies





Striking Affluence

Amenities

Gym Banquet Hall Private Theatre Squash & Badminton Court

Luxury Retail VIP Lounge Meeting Room

Magnificent Drop-Offs





Imposing Entrance Lobby



Splendid, Spacious & Welcoming

Vastu-compliant architecture

Optimum space utilization

VRV air-conditioning





Exuberant & Lavish

World-class amenities
Top-of-the-line fixtures and fittings

Mesmerising View,
Abundant Greenery

2 apartments per floor

Unhindered view of the Aravallis &
cityscape





Always Close

NH8
< 500 meters



Golf Course
<10 mins



Airport
<22 mins



Cybercity
<12 mins



Cinema Theatre
< 5-7 mins



Mall
< 5 mins



Hospital
< 10 mins

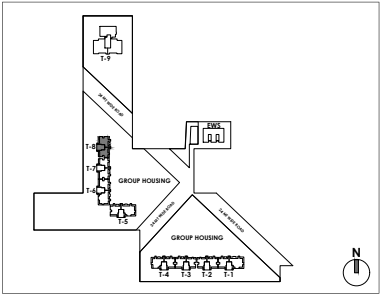
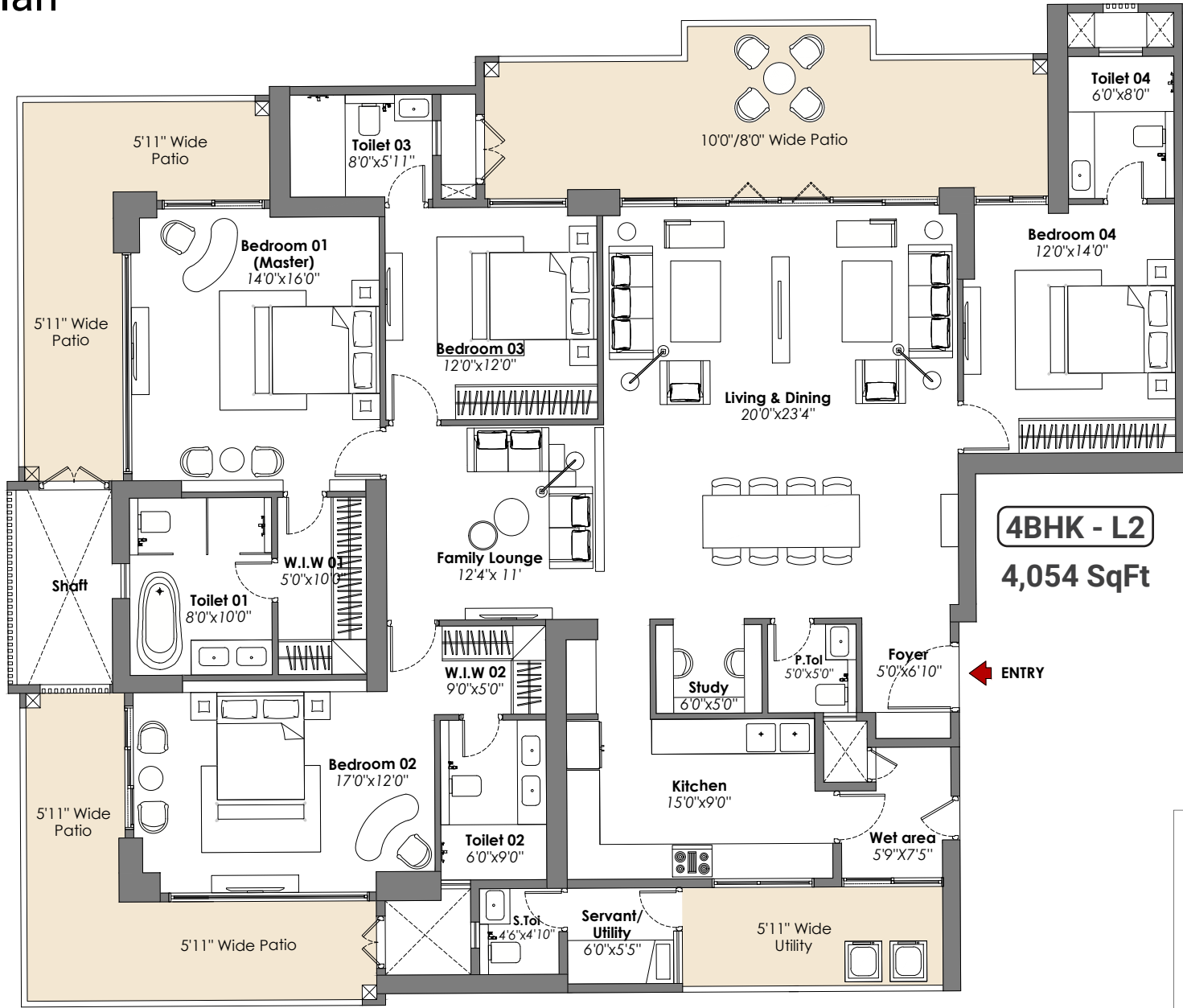


School
< 10 mins



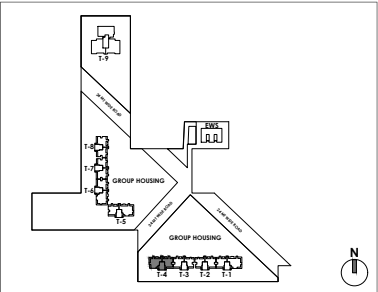
T8

Typical Floor Plan



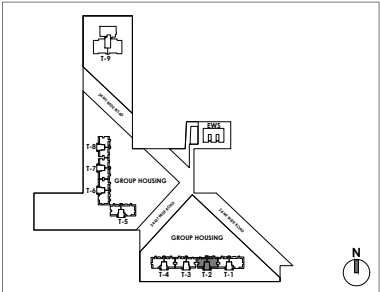
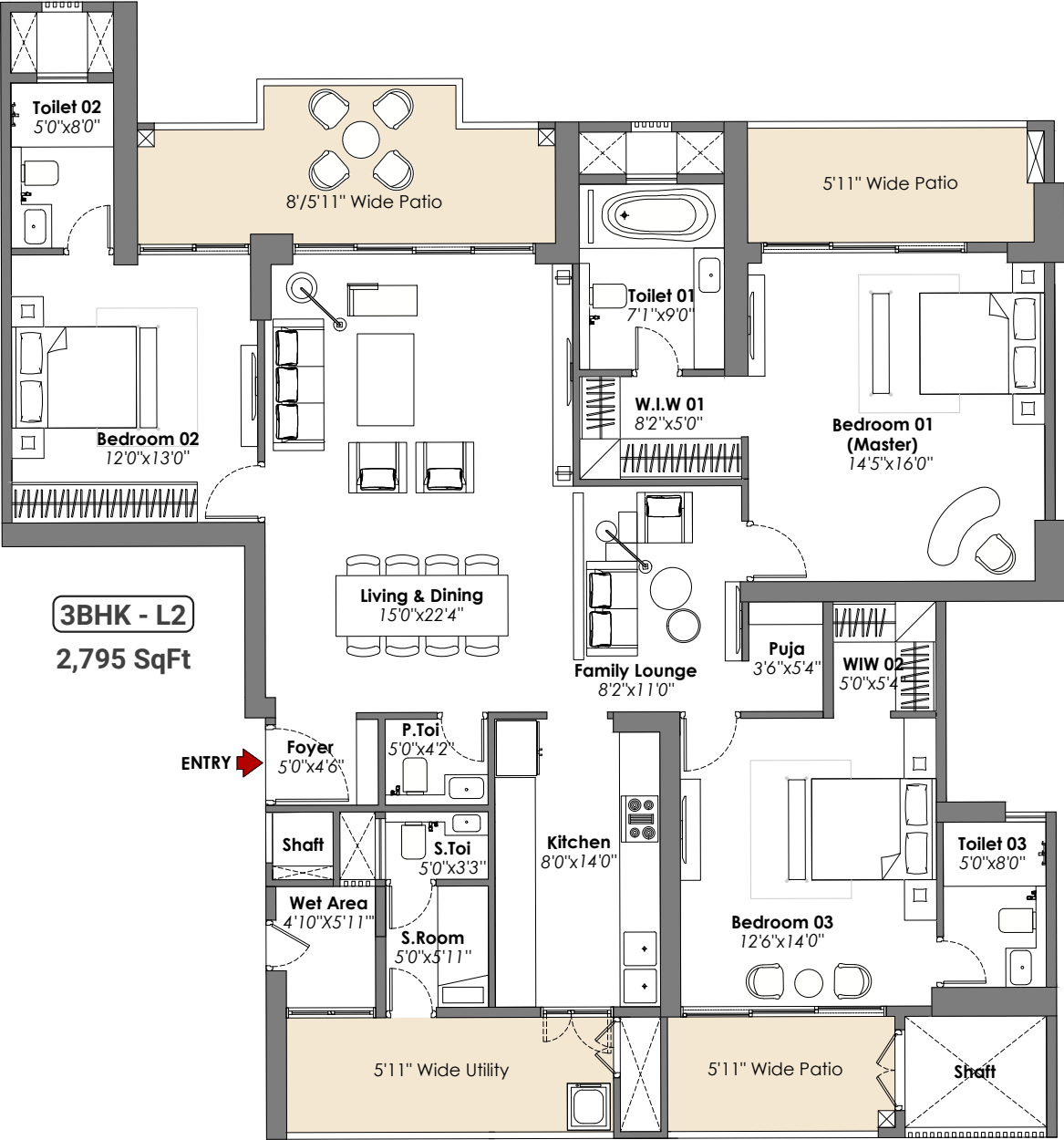
T4

Typical Floor Plan



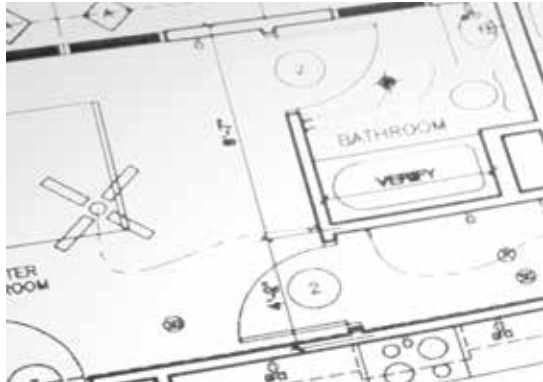
T2

Typical Floor Plan



SITE KEY PLAN

Principle Design
Consultant



**Architect
Hafeez
Contractor**

Construction
Partner



Landscape Architect



Top-Of-The-Line Consultants

Group Consultant



Structural
Engineering



MEP Consultants



Traffic
Consultant



Top-Of-The-Line Consultants

Specifications

	Flooring	Walls	Ceiling	Dado	Counter Top	Door	Windows/ Glazing	Fitting & Fixtures	Electricals/ HVAC/Security& Surveillance	Other Miscellaneous
Living/Dining	Imported marble	Acrylic emulsion paint on POP punning/ gypsum	Acrylic emulsion paint on POP punning with corner gypsum boxing false ceiling							
Master Bedroom/ Dress Room	Laminated wooden flooring/Marble.	Acrylic emulsion paint finish	Acrylic emulsion paint on POP punning with corner gypsum boxing false ceiling							
Bedrooms	Laminated wooden flooring/Tiles	Acrylic emulsion paint finish	Acrylic emulsion paint on POP punning with corner gypsum boxing false ceiling							
Utility Room/ balcony/toilet	Tiles of standard make	Oil-bound paint finish and anti-skid floor & tiles on the walls	Oil bound paint finish			Main door: Polished solid core moulded skin door / flush doors. Internal doors: polish moulded skin doors/ flush doors	Energy efficient double glass/single, tinted/ reflective/ clear glass with UPVC frames in all habitable areas	Conventional CP fittings & sanitary ware	Modular switches of North-west/ crabtree/MK or equivalent make, copper wiring, ceiling fans in all rooms except toilets and ceiling light fixtures in balconies	Modular wardrobes of standard make in bedrooms except in s.room
Kitchen	Marble/premium quality tiles	Acrylic emulsion paint	Acrylic emulsion paint on ceiling/ false ceiling	Premium quality tiles 2ft above counters	Marble/ granite/ synthetic stone		Single pinhead/ tinted/ clear glass in all toilets & utility rooms	Premium quality CP fittings and sink with drain board	100% DG power back up. Secured gated community with access control systems, CCTV in all areas	Modular kitchen with hob, chimney, oven, microwave, dishwasher, refrigerator, washing machine of reputed manufacturer & make
Master Toilets/other toilets	Marble/premium quality tiles	Marble/ premium quality tiles/mirror	Acrylic emulsion paint on ceiling/ false ceiling	Premium quality tiles upto door height	Marble/ granite/ synthetic stone			Towel rail, toilet paper holder, robe hooks, single lever CP fittings, health faucet, wash basin & EWC	One intercom point in each apartment. Fire fighting system with sprinklers, smoke detector system etc as per NBC norms	Bath tub in master bedroom. Single lever fittings, CP fittings, wash basin, floor mounted/wall-hung WC of Kohler/Roca/Duravit/ Parryware or equivalent make
Front Balcony	Anti-skid tiled floor	Exterior grade paint	Oilbound paint finish						VRV air conditioning system inside apartment excluding kitchen, toilet & servant room	
Rear Balcony	Anti-skid tiled floor	Exterior grade paint	Oilbound paint finish							
Staircase & Lift Lobby	Stairs: Terrazo/mosaic tiles/marble/kota stone. Lift lobby floors: Combination of granite/marble/tiles	Enamel paint & OBD	-							CPVC & UPVC piping for water supply inside the toilet & kitchen and in the vertical downtakes.



Disclaimer: All information, images and visuals or sketches including landscaping shown in this advertisement are only an architect's impression, representative images, or artistic renderings and not to scale. Nothing contained herein intends to constitute a legal offer and does not form part of any legally binding agreement and/or commitment of any nature. The company endeavours to keep the information up to date and correct. Recipients/ viewers are advised to exercise their discretion in relying on the information shown/ provided and are requested to verify all the details, including area, amenities, services, terms of sales, payments, price, and other relevant terms independently with the sales team/ company, have a thorough understanding of the same and take appropriate advice prior to concluding any decision for buying any unit(s) in the project. www.wlcorp.com | HARERA No.: 7 of 2023 Dated: 12.01.2023 | License no. 91 & 92 of 2022.
* 1 Hect. = 2.471 Acres, 1 Acre = 4840 sq. yds. or 4046.86 sq. mtrs., 1 sq. mtr. = 10.764 sq.ft.



WHITELAND THE ASPEN

ABOVE IT ALL

Corporate Office: Whiteland Corporation Private Limited
10th & 11th Floor, Tower 1, Worldmark, Sector - 65, Gurugram, 122001
www.wlcorp.com