

# ALLURING & PRISTINE







SHREE VARDHMAN CITY SOHNA



10.75 ACRES  
OF AESTHETICALLY  
WELL PLANNED  
TOWNSHIP THAT  
GIVES YOU PEACE  
OF MIND





- WIDE INTERNAL ROADS
- GRID STREET PATTERN
- REGULAR & GEOMETRICAL SHAPE OF PLOTS
- MAXIMUM GREEN AREA
- TREE LINED BOULEVARDS
- PAVED PATHWAYS & JOGGING TRACKS

MAJESTIC  
ENTRANCE  
WITH  
SECURITY  
SCANNING



Walking, Jogging Pathways  
& Relaxing Sitting Areas

# BEAUTIFUL WELL-PLANNED GARDENS





A photograph of three bee-eaters perched on a thin branch. The bird on the left is facing left, the middle one is facing right, and the one on the right is facing forward with its wings spread. They have orange-brown heads, yellow chests, and green bodies. The background is a soft, out-of-focus green. Pink flowers are visible on the branch.

# COMMUNITY LIVING

A sense of belonging, security, sharing  
of resources, healthy cooperation and  
fun filled life.

- LANDSCAPED GARDENS
- CHILDREN PLAY AREA
- RELAXING SITTING AREA
- GAZEBO
- STREET LIGHTS, WELL LIT WALK WAYS
- WELL EQUIPPED MAINTENANCE STAFF





# FACILITIES

SHREE VARDHMAN CITY SOHNA



WITH IN THE TOWNSHIP ONE HAS CONVENIENT SHOPPING AREAS THAT MEET ONES BASIC DAY TO DAY REQUIREMENTS.

- SECURITY 24X7
- WATER SUPPLY 24X7
- BEAUTIFUL LANDSCAPES
- ONE OF ITS KIND GATED TOWNSHIP WITH SECURE GREEN ENVIRONMENT
- WELL PLANNED UNDERGROUND ELECTRIC CABLES



# SHOP CUM OFFICE PLOTS (SCO)

AN EXCELLENT LOCATION ADVANTAGE FOR SHOPS AND OFFICES THAT HAS A DEDICATED AREA FOR CONVENIENCE STORE, APPAREL STORES, PHARMACY, GYMNASIUM, ATMS, RESTAURANTS & BOOKSTORES.

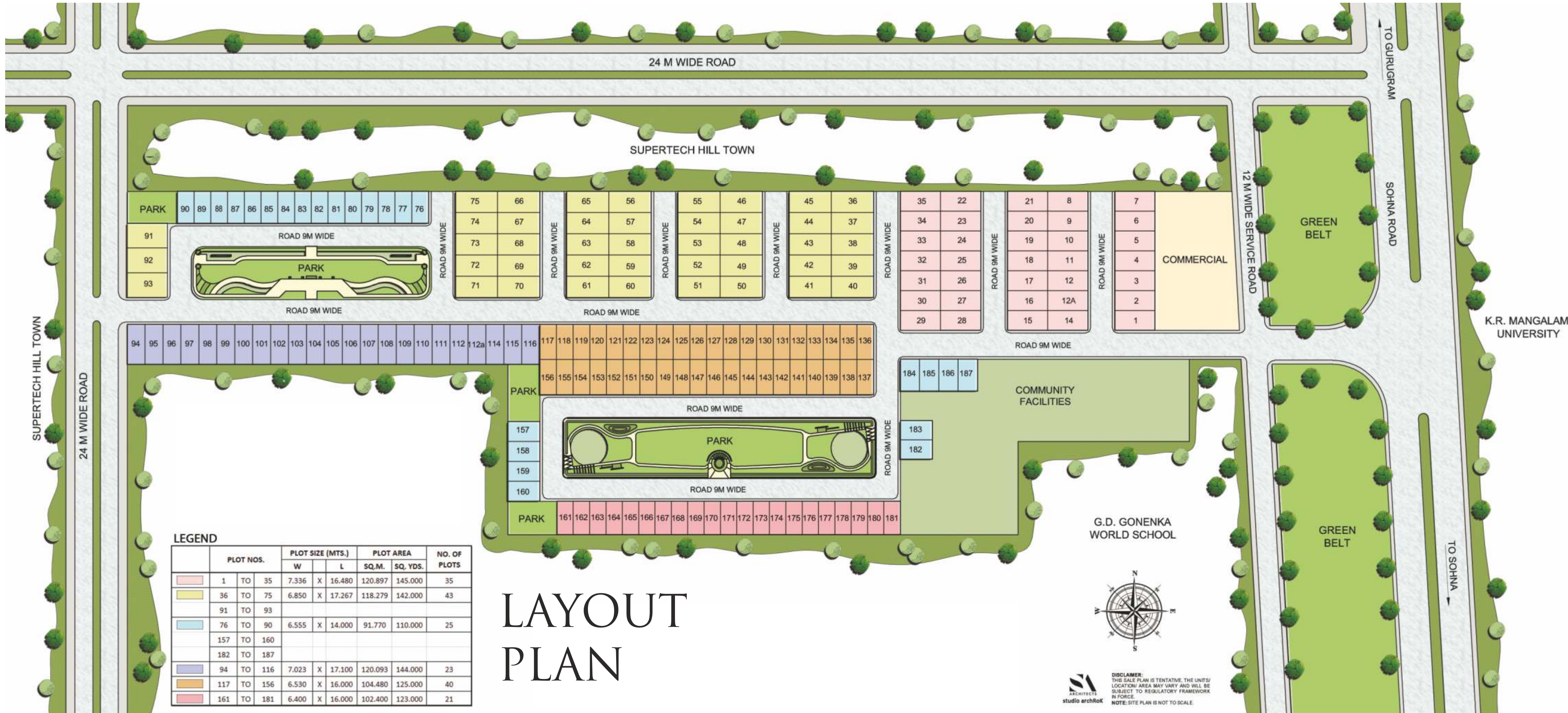
Through a decade-long endeavour to ensure the highest possible quality of life to their patrons, we ensure that everything adds its exclusive value in **Shree Vardhman City Sohna** that is worth its weight in gold.



The projects location advantage offers an easy access to infrastructure like shopping, office and a nice blend of retail and basic needs outlets.







24 M WIDE ROAD

SUPERTECH HILL TOWN

TO GURUGRAM

SOHNA ROAD

K.R. MANGALAM UNIVERSITY

TO SOHNA

GREEN BELT

GREEN BELT

COMMERCIAL

COMMUNITY FACILITIES

G.D. GONENKA WORLD SCHOOL



DISCLAIMER: THIS SALE PLAN IS TENTATIVE. THE UNITS/ LOCATION/ AREA MAY VARY AND WILL BE SUBJECT TO REGULATORY FRAMEWORK IN FORCE. NOTE: SITE PLAN IS NOT TO SCALE.

# LAYOUT PLAN

LEGEND		PLOT NOS.		PLOT SIZE (MTS.)		PLOT AREA		NO. OF PLOTS
				W	L	SQ.M.	SQ. YDS.	
	1	TO	35	7.336	X	16.480	120.897	35
	36	TO	75	6.850	X	17.267	118.279	43
	91	TO	93					
	76	TO	90	6.555	X	14.000	91.770	25
	157	TO	160					
	182	TO	187					
	94	TO	116	7.023	X	17.100	120.093	23
	117	TO	156	6.530	X	16.000	104.480	40
	161	TO	181	6.400	X	16.000	102.400	21



# GURGAON - SOHNA

MASTER PLAN



## LOCATION ADVANTAGES:

ADVANTAGES OF SHREE VARDHMAN CITY SOHNA OFFERS IS EASY ACCESS TO BOTH, OLD & NEW GURGAON.

- THE PROJECT IS SITUATED ON MAIN GURUGRAM SOHNA ROAD ADJACENT TO G. D GOENKA WORLD SCHOOL AND OPPOSITE K. R MANGALAM UNIVERSITY SOHNA
- 15 MINUTES DISTANCE FROM RAJIV CHOWK
- 5 MINUTES DISTANCE FROM IMT SOHNA
- 10 MINUTES DISTANCE FROM KMP EXPRESS WAY







Shree Vardhman Group is having more than two decade experience in development, marketing, and promotion of various residential and commercial projects. The Group is developing more than 15 million sq. ft. of residential and commercial properties in North India. The qualities that set the group apart amongst its contemporaries are its privileged view point and daunting passion. Every endeavor and effort clearly emphasises the credibility and integrity of the group. The group is well known for its commitment to quality and transparency in its projects. The projects of group are located at most prime locations in Gurgaon, Sonapat, Kurukshetra, Panchkula and Sohna. Shree Vardhman Group has carved a niche for its self in the real estate industry in India, having more than 8000 satisfied customers in its various projects.



SHREE VARDHMAN  
GARDENIA  
14 Acre Group Housing  
Sector - 30, Sonapat



SHREE VARDHMAN  
CITY  
50.125 Acre Township  
Sector - 30, NH-1, Kurukshetra



SHREE VARDHMAN  
MY HOMES  
Luxurious Independent Floors  
Sector - 30, NH-1, Kurukshetra



SHREE VARDHMAN  
FLORA  
10.88 Acre Group Housing  
Sector - 90, Gurgaon



SHREE VARDHMAN  
MANTRA  
11.26 Acre Group Housing  
Sector - 67, Gurgaon



SHREE VARDHMAN  
VICTORIA  
10.96 Acre Premium  
Group Housing  
Sector - 70, Gurgaon



The Flower City  
40.206 Acre, Plotted Colony  
Sector-32, Kurukshetra,  
Haryana



SHREE VARDHMAN  
GREEN COURT  
10.05 Acre Affordable Group  
Housing  
Sector - 90, Gurgaon



SHREE VARDHMAN  
GREEN SPACE  
5.00 Acres, Affordable Group Housing  
Sector - 14, Panchkula



SHREE VARDHMAN  
SHOPPING MART  
Shopping Centre  
Sector - 67, Gurgaon





## Shree Vardhman Developers Pvt. Ltd.

CIN No. U70101DL2005PTC142029

### Regd. Office

301-311, 3rd Floor, Indraprakash Building, 21-Barakhambra Road  
New Delhi – 110001 (INDIA)

**Phone** : +91 11 43605560 (100 Lines)

**E-Mail** : [sohnacity@shreevardhmangroup.com](mailto:sohnacity@shreevardhmangroup.com)

**Web site** : [www.shreevardhmangroup.com](http://www.shreevardhmangroup.com)

**HARERA Registration No. 19 of 2020 Date 04.08.2020**

**Licence No. 131 of 2019 Dated 12.12.2019**

*Nothing contained herein intends to constitute a legal offer and does not form part of any legally binding agreement. All images are merely artistic conceptualization and do not replicate the exact product or development and should not be relied upon as definitive reference.*