

A modern, minimalist interior space, likely a lounge or common area. The room features a curved staircase with a glass railing on the right side. The ceiling is white with several circular recessed lights. The walls are made of vertical wooden slats. The floor is light-colored. There are several armchairs and a sofa arranged in a seating area. A large potted plant is visible on the right. The overall design is clean and contemporary.

# PARAS FLORET

SECTOR – 59, GURUGRAM

# MASTER PLAN

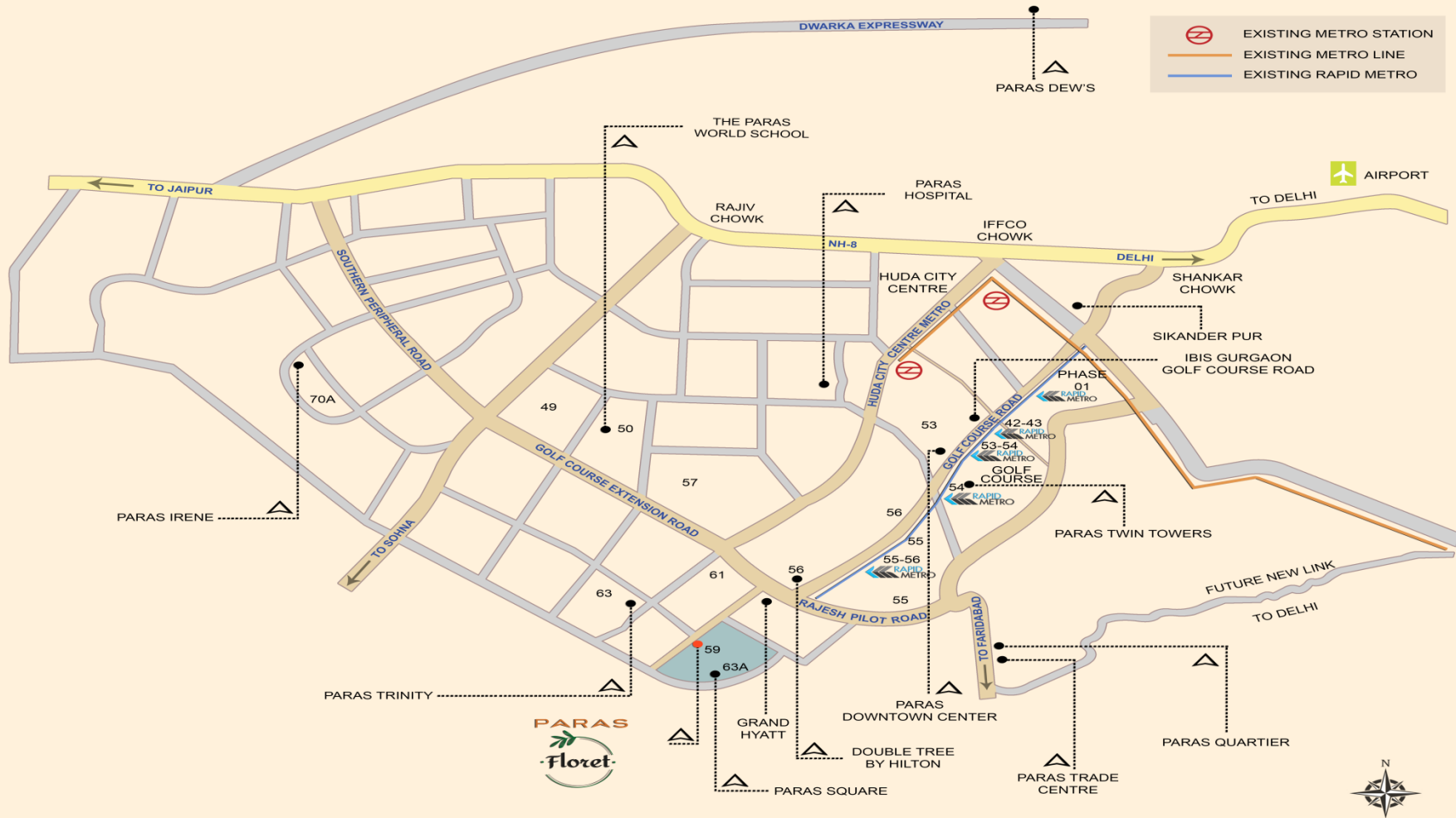




# ENTRY GATE



# LOCATION PLAN





# ROAD VIEW





## ROAD VIEW PARTY LAWN SIDE





# PARTY LAWN





# OPEN GYM





# KIDS PLAY AREA





# VILLA VIEW



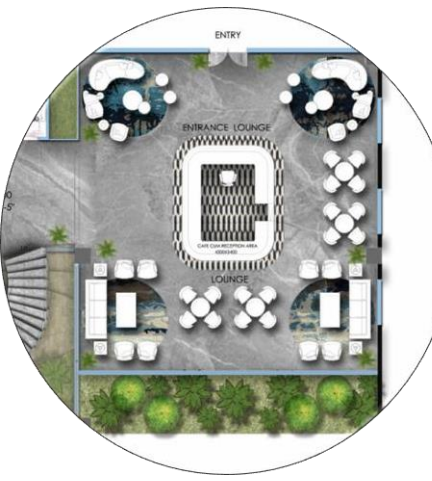


A modern lounge interior with a spiral staircase and the word CLUB overlaid. The room features a large, curved staircase with a wooden railing, a large window with a wooden frame, and several armchairs and sofas. The word CLUB is written in a bold, orange font in the center of the image.

CLUB

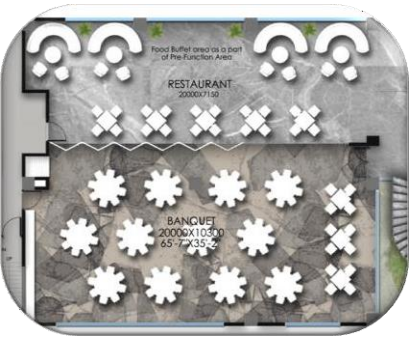


# RECEPTION





# BANQUET VIEW





## BOOKSHELF DESIGN

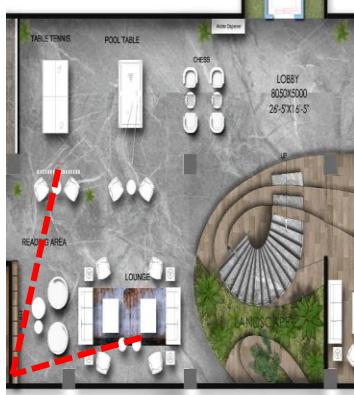


**BOOKSHELF DESIGN**





## GAMING ZONE & STAIRCASE AREA DESIGN



### BLOW UP PLAN





## LIFT LANDING AREA





# AUDIO / VIDEO ROOM





# GYM





# YOGA ROOM





# TREATMENT ROOM





**STEAM ROOM**



**SAUNA**

