




EMPERIUM

BUILDING VALUES

Corporate Office: Emperium Private Limited, Unit 10 B, 10th Floor,
Grand View Tower. Golf Course Extn. Road, Sector-58, Gurugram-122011, Haryana.

Yamunanagar Office: Emperium Resortico, Sector 33-34, Near Buria Chowk,
Yamuna Nagar , Haryana -135133

Panipat City Office: 15, 2nd Floor, Gol Market.
Model Town, Panipat-132103.

 emperium.in

 [emperiumprivatelimited](https://www.instagram.com/emperiumprivatelimited)  [Emperium Private Limited](https://www.facebook.com/EmperiumPrivateLimited)

 [Emperium Private Limited](https://www.linkedin.com/company/emperium-private-limited)  [EmperiumPrivateLimited](https://www.youtube.com/EmperiumPrivateLimited)

Licence-69 of 2024

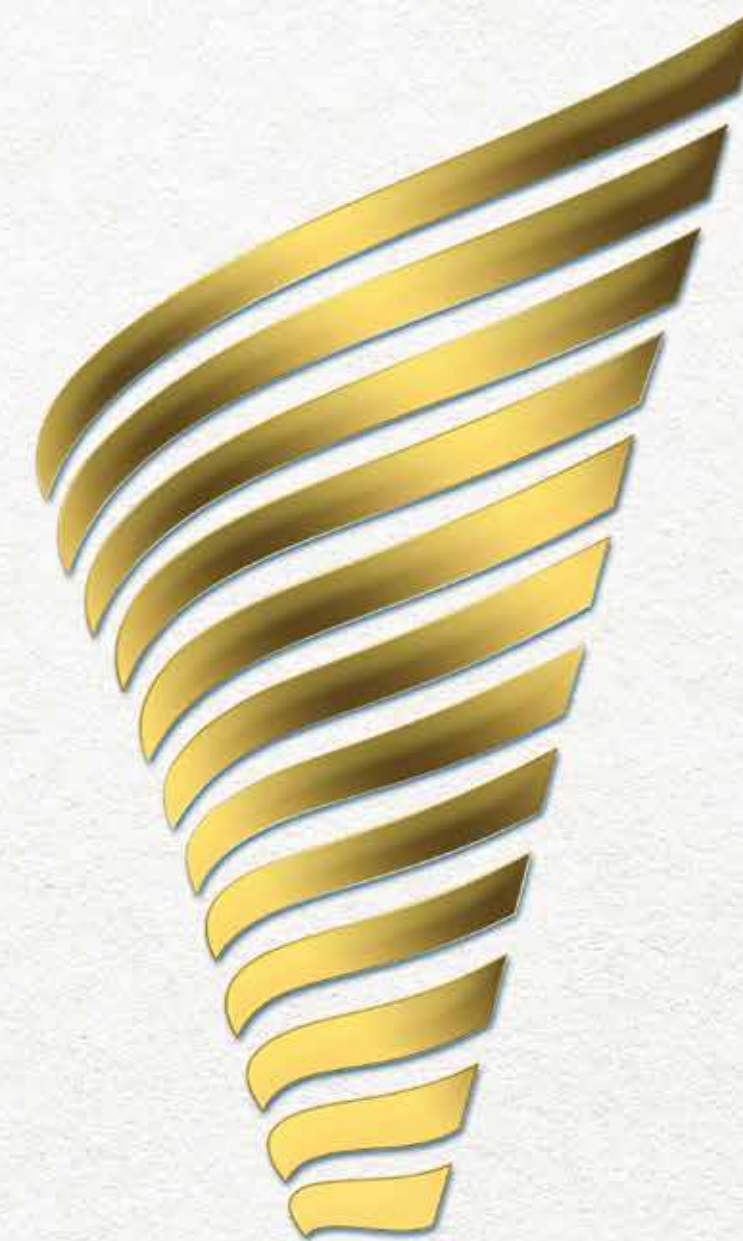
HRERA Regd. No. HRERA/PKL/YNR/611/2024 Dated 14.08.2024

CIN: U70109DL2021PTC382173

Memo Nos: LC-5240/JE(SB)/2024/18285



Disclaimer: Residential Plotted Colony Under DDJAY, 40.49 acres. Total no. of units: 727 plots, Commercial & Milk Booth. Name of the Developer: M/s Emperium Developers Private Limited. All the approvals/sanctions can be checked in the regd. Office of Emperium Developers Pvt. Ltd. Images shown in this brochure/advertisement are imaginary/artistic impressions only. This brochure/advertisement is an invitation to offer only. The company reserves the rights to add, alter or delete facilities from the brochure/advertisement at any time and revise terms under the acceptable law. Please verify all details and aspects of any proposal/booking/acquisition of plots directly with our authorised representative. Any fee/cess/taxes/charges, etc., if made applicable by concern govt./authority, same will be charged/recovered accordingly. This is not an offer, an invitation to offer and/or commitment of any nature. Recipients are advised to approve themselves of the necessary and relevant information of the project prior to making any purchase decisions. All specifications of the unit shall be as per final agreement between the parties. 1 square yard=0.8361 square meter; 1 square meter=10.764 square feet. HRERA website: <https://www.haryanarera.gov.in>



EMPERIUM RESORTICO

WELCOME
to the world of
EMPERIUM

A decorative flourish consisting of several elegant, swirling lines in a dark red color, positioned below the word "EMPERIUM".



Since its establishment in 2015, Emperium has cemented its legacy as a committed real estate builder with an outstanding track record of delivering projects ahead of schedule. At Emperium, our vision transcends mere construction. We aspire to cultivate dynamic communities that serve as thriving hubs of life. Our aim is to provide residents with abundant opportunities to work, learn, recreate, and grow personally. We endeavour to create spaces where individuals not only desire to live but also flourish, fostering a profound sense of belonging and fulfilment for all those who call our communities home.

Our core philosophy of "professionalism" embodies values such as integrity, expertise, transparency, accountability and customer-centricity. These principles guide us in consistently delivering high-quality, innovative and sustainable development projects. Emperium's impact has transformed the city of Panipat through innovation and excellence. Today, Emperium is synonymous with trust and the achievement of 100% on-time delivery.

We take great pride in our invitation to become a Patron member of the National Real Estate Development Council (NAREDCO). Join us as we embark on a journey of innovation and transformation to reshape the urban landscape and redefine the art of living, not only in Haryana but soon across India.

OUR PROJECTS

PANIPAT



YAMUNANAGAR



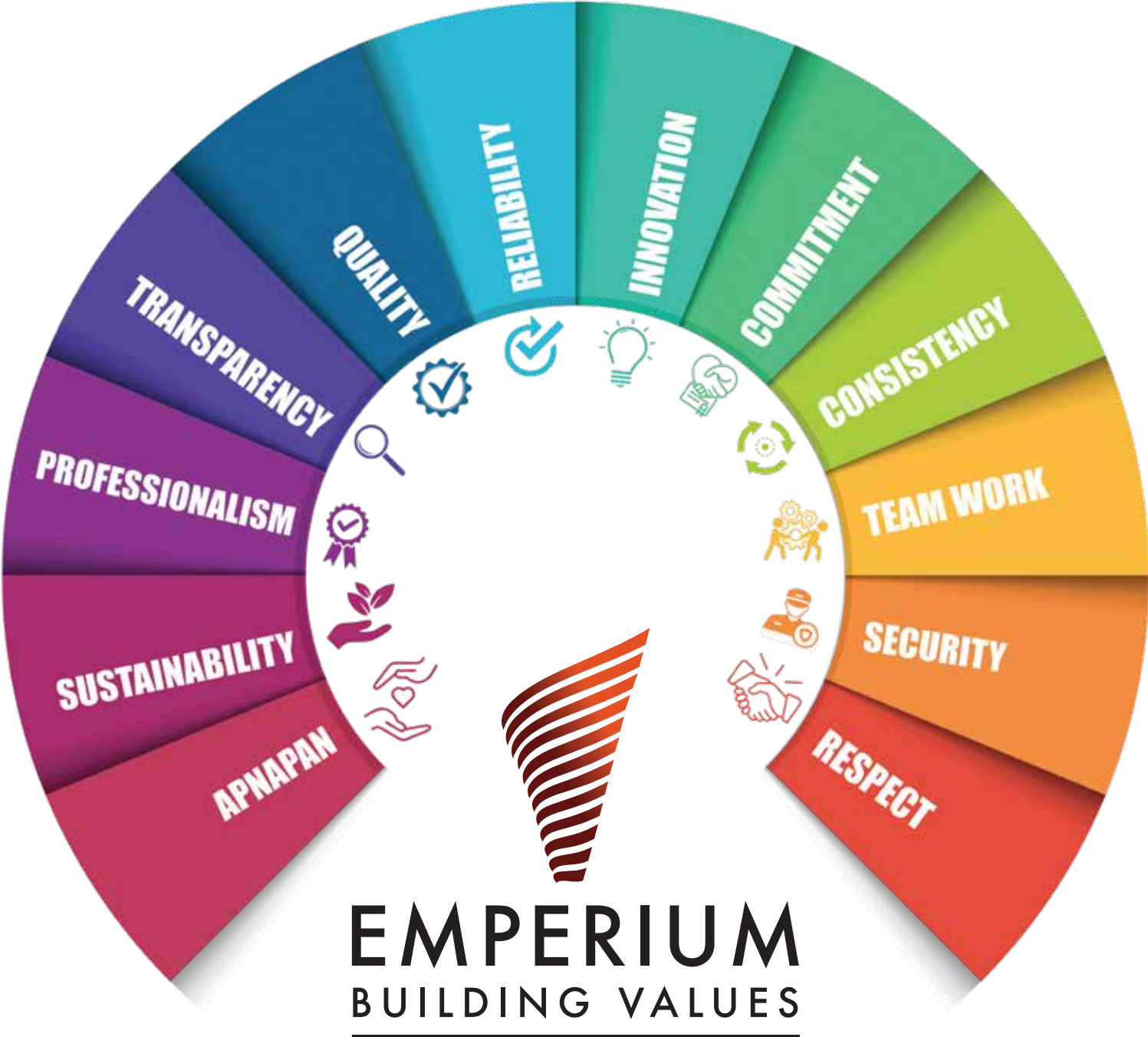
GURUGRAM

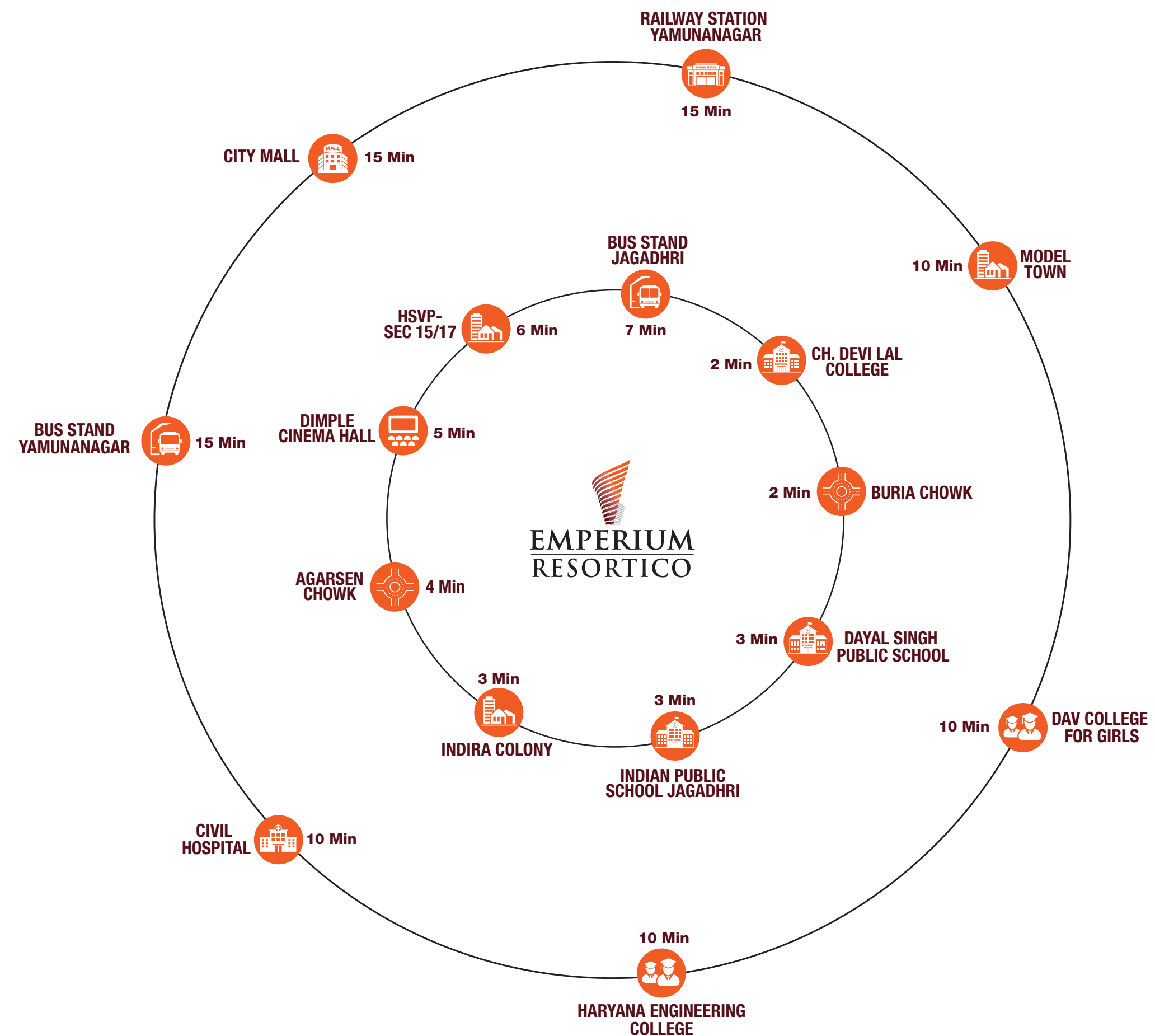


BUILDING VALUES



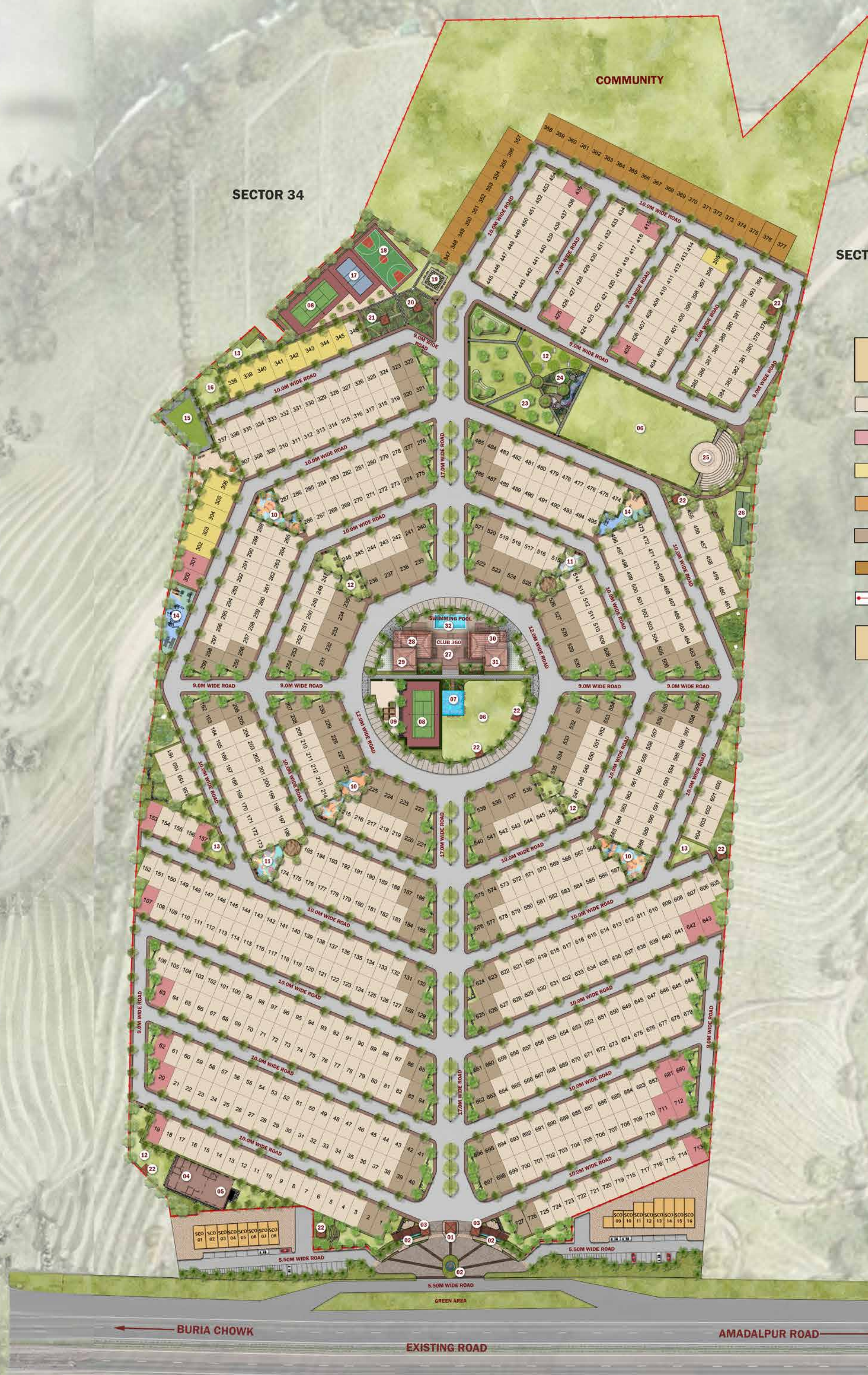
At Emperium, a core set of values drives everything we do. Welcome to Emperium, where we redefine "Apnapan." Like a close-knit family, Emperium cares for an individual's comfort and convenience, infusing every aspect of our work with professionalism and a personal touch. We draw inspiration from the dreams of our valued customers as it motivates us to fulfil their aspirations. We pride ourselves on delivering quality projects ahead of schedule. By delivering on promises, we lay the foundation of trust for enduring relationships with all our partners and customers. Our passion lies in holistic lifestyle transformation, solidifying our reputation as an honest, trusted, and esteemed organization. Join us as we embark on this journey to revolutionize the industry, one heart at a time.







EMPERIUM RESORTICO



SECTOR 33

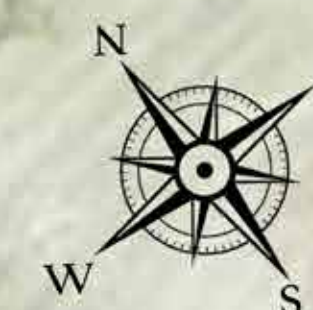
SECTOR 34

| SALEABLE AREA | |
|---------------|--------|
| (PLOT TYPE) | (AREA) |

| | |
|-------------------|------------------|
| Type A | 90 - 120 SQ.YD. |
| Type B | 121 - 150 SQ.YD. |
| Type C | Above 150 SQ.YD. |
| SCO | 52 - 90 SQ.YD. |
| Villas | |
| Floors | |
| Enclosed Boundary | |

| LEGEND |
|--------|
|--------|

- 01 ENTRANCE GATE
- 02 WATER FEATURE
- 03 SCHOOL BUS WAITING AREA
- 04 INDOOR BADMINTON COURT
- 05 INDOOR TABLE TENNIS
- 06 COMMUNITY LAWN
- 07 WATER FOUNTAIN PLAZA
- 08 TENNIS COURT
- 09 PERGOLA
- 10 KIDS PLAY AREA
- 11 TODDLERS AREA
- 12 ELDERLY PARK
- 13 PET PARK
- 14 OPEN GYM
- 15 SKATING RINK
- 16 TAEKWONDO/KARATE ZONE
- 17 VOLLEY BALL COURT
- 18 BASKET BALL COURT
- 19 CHESS COURT
- 20 HERB GARDEN
- 21 PERFUME GARDEN
- 22 GAZEBO
- 23 YOGA PARK
- 24 REFLEXOLOGY PARK
- 25 OPEN AIR THEATRE
- 26 CRICKET NET
- 27 CLUB 360
- 28 THEATRE
- 29 RESTAURANT
- 30 GYMNASIUM
- 31 BANQUET HALL
- 32 SWIMMING POOL



*ARTISTIC VIEW
*NOT TO SCALE



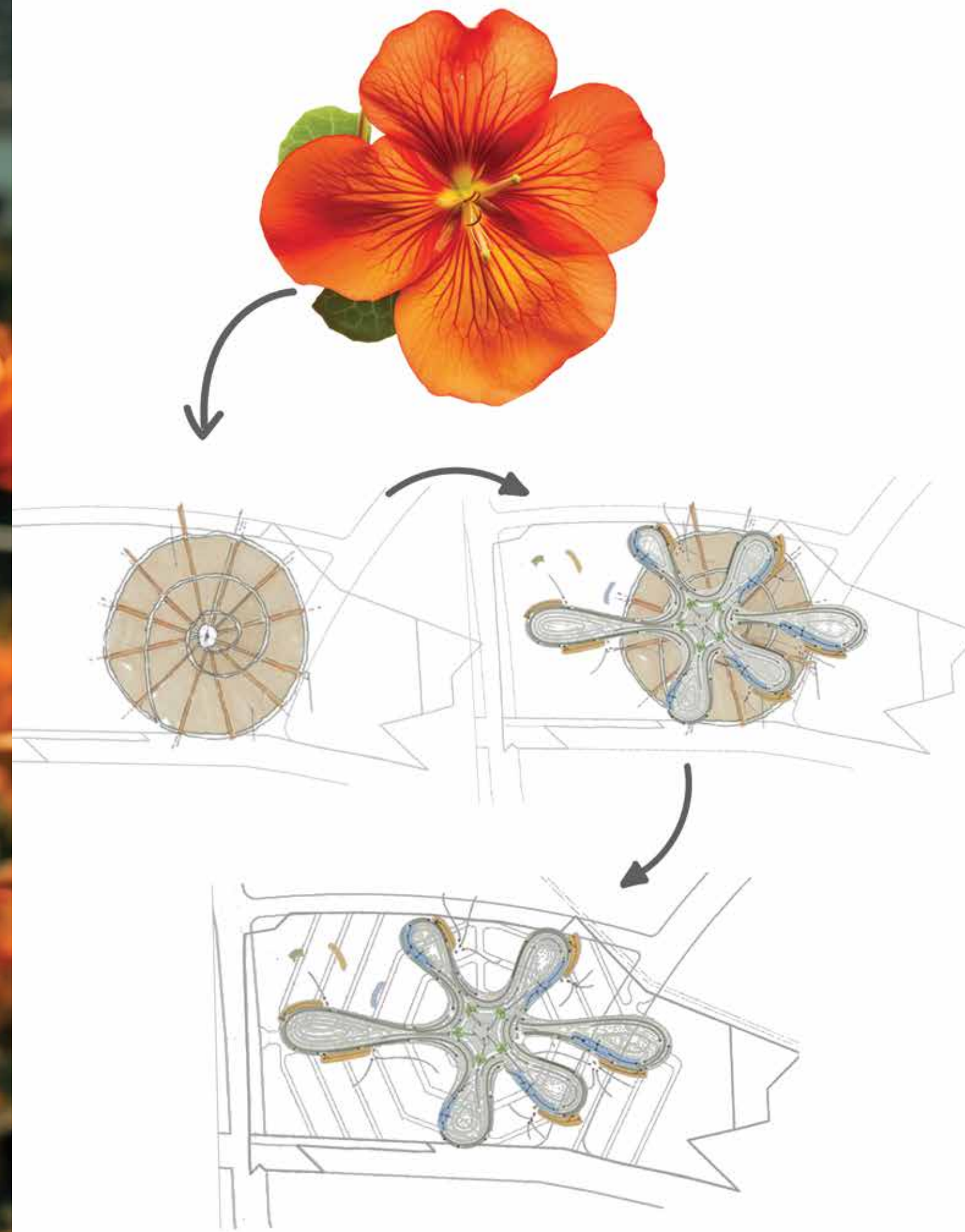
YAMUNANAGAR'S FIRST RESORT-STYLE TOWNSHIP

COME HOME TO RESORT-STYLE LIVING

The need for connection and community is as fundamental as the need for air, water, sunlight and greenery. Emperium brings you a one-of-a-kind community life wrapped in the comforts of resort-style living. Inspired by nature's design, Emperium Resortico promises a wholesome living experience enriched with sustainable planning, wide-open spaces, eco-conscious architecture, and world-class luxuries, carefully handpicked to deliver a class-apart lifestyle. Right in the heart of Yamunanagar, Sector 33 & 34, Jagadhri, Buria Sarkar, Haryana, Emperium Resortico offers a lifestyle that transcends the ordinary.



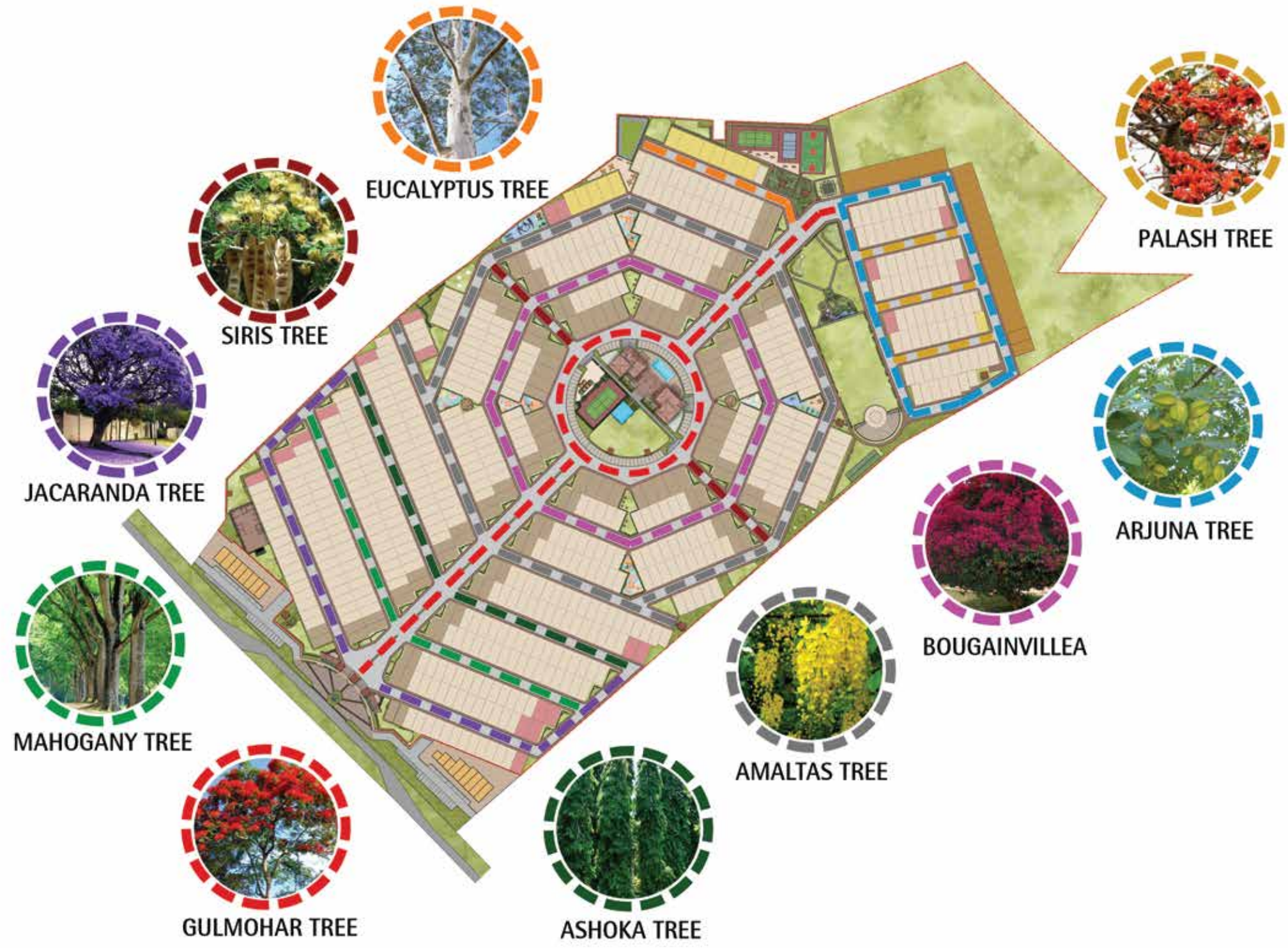
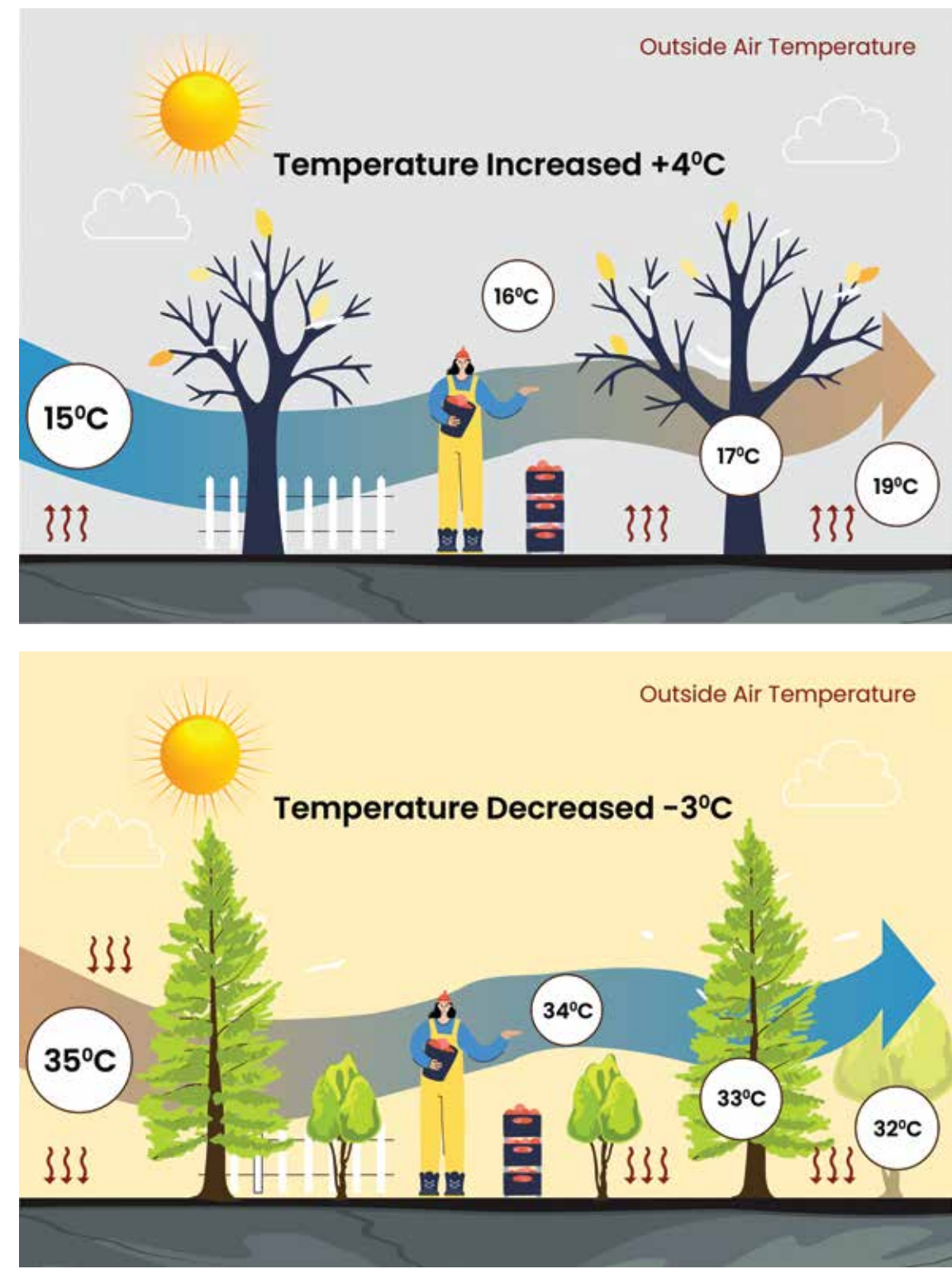
INSPIRED BY
Nature



The maple flower symbolizes growth, balance, and harmony. Drawing inspiration from this exquisite bloom, the project incorporates radial symmetry and circular patterns, mirroring the delicate petals of the maple flower. Meticulously planned, the project ensures optimal space management, with radial walkways branching off from a central location to foster connectivity and flow, resulting in a dynamic and seamless experience.




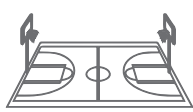




INSPIRED BY
sustainability

Emperium Resortico is based on the science of Biomimicry – an urban cityscape concept that not only integrates actual nature in design but also makes the most of natural design of the environment to create a positive impact on the planet. With grand open spaces and aesthetic floral gardens, the project boasts a meticulous mix of lush green vegetation and water bodies, that help mitigate climate change, while decreasing temperature for a comfortable life.



COME HOME TO RESORT-STYLE
recreation

At Emperium Resortico, immerse yourself in resort-style recreation where joy knows no limits. Let the sound of children's laughter echo through Doodle Garden and Giggle Garden. Wander serenely through our Soul Garden. Embrace friendly competition at our Sports Courts and cherish moments with your beloved pets at our Pet Park. Create lasting memories with every playful moment at Emperium Resortico.

- | | | | |
|---|---|--|---|
|  KID'S PLAY AREA |  INDOOR BADMINTON COURT |  VOLLEYBALL COURT |  BASKETBALL COURT |
|  BOX CRICKET TURF |  JOGGING TRACK |  TENNIS COURT |  OPEN GYM |



COME HOME TO RESORT-STYLE
rejuvenation

Discover the allure of lush parks, serene gardens, and beautiful gazebos, all thoughtfully integrated to bring nature's embrace to your doorstep. With a commitment to tree plantations, every stroll through our community becomes a journey of rejuvenation, inviting you to unwind and find solace in the soothing rhythm of the outdoors. Step into a world of leisure where every moment feels like a getaway. Spaces to connect, unwind, and create lasting memories.



COME HOME TO RESORT-STYLE
security

With secure surroundings enhanced with smart lights, CCTV cameras, RFID entry, all inside a gated community, enjoy peace of mind and effortless living in a home you can truly call yours.



RFID ENTRY



24X7 SECURITY



CCTV CAMERAS



GATED COMMUNITY



8' BOUNDARY WALL



CLUB360

COME HOME TO RESORT-STYLE
celebrations

Step into Club 360, a world of personalized experiences at Emperium Resortico and a haven where life comes full circle. Redefining modern residential living in Yamunanagar, Club 360 stands as a beacon of refined luxury. Immerse yourself in engaging conversations with like-minded individuals in our luxurious Members' Lounge. Dine beneath the stars in our romantic Al Fresco restaurant and savour those intimate candle-lit dinners. Surprise your children with poolside parties and indulge in exclusive premieres at our intimate theatre. With impeccable design and luxurious amenities, Club 360 transforms every moment into a timeless memory to treasure.





MEMBERS' LOUNGE



SPORTS CENTRE



CAFE & RESTAURANT



BANQUET HALL



GYMNASIUM



THEATRE



BAR



SWIMMING POOL



OUR COMMITMENT TO
100% BEFORE TIME DELIVERY
HAS WON US MANY ACCOLADES



ETRealty



Iconic Project
of the Year 2022

ET-Times of India



Emerging Developer
of The Year 2023

Dainik Bhaskar



Jewels of
Haryana 2023

Dainik Jagran



Jagran Achievers
Award 2023

AsiaOne



Excellence in Timely
Delivery of Projects 2024

PARTNERS & CONSULTANTS



Behera Associates Pvt. Ltd.

