



A HOME IS  
BEYOND IT'S FOUR WALLS  
COME HOME TO

PRIDE



| sales@bptp.com | www.bptp.com

DGTCP Haryana has granted M/s BPTP Parklands Pride (P) Ltd. License no. 30 of 2010 dated 01/04/2010 and 12 of 2012 dated 22/02/2012 for developed a Residential colony over 152.973 acres. The total no. of plots approved are 1625 (including EWS) & the Layout plan is approved vide DRG. NO. DGTCP-2923 on 09/12/2011. \*\*The boom barriers and gates shall be installed at various locations within the township in terms of the DTCP policy dated 23.01.2014 There is a provision of 5 nursery schools, 3 primary schools, , 1 high school, 1 club, 1 creche, 1 religious building, 1 dispensary, 4 nursing homes, 1 Sub Post Office, 3 Clinic, 3 ATM, 3 Beauty Parlour, 3 Multipurpose Booth, 3 Milk & Vegetable Booth, 1 Taxi Stand and 1 electric sub-station. Note- Approvals can be checked in the colonizer's office. Layout plan is subject to changes as per the final Demarcation/Zoning plan of the colony. Regd. Office: M-11, Middle Circle, Connaught Circus, New Delhi - 110001, Tel.: +91-11-4957-2787, www.bptp.com, CIN - U70109DL2006PLC153109. # Club & swimming pool under construction. \* Terms and Conditions apply



# PRIDE

Right from its Grand entrance, to the opulent water bodies, sprawling greens & a host of Amenities, Pride offers an experience that befits a Resort. A home at Pride is an experience, truly nothing comes close.

**PRIDE TAKES LOW-DENSITY LIVING TO THE NEXT LEVEL WITH ONLY 17 APARTMENTS PER ACRE.**

This lush green township which is spread across 153 acres in sector 77 Faridabad will cater to your every need as it is in close proximity to all leading schools, hospitals and shopping centres of Greater Faridabad.

COME HOME TO REMARKABLE LUXURY





ACTUAL SITE IMAGE



ACTUAL SITE IMAGE

Pride is your very own sanctuary of solitude away from the stress of everyday life, welcome to the haven of peace and grandiose.



ACTUAL SITE IMAGE



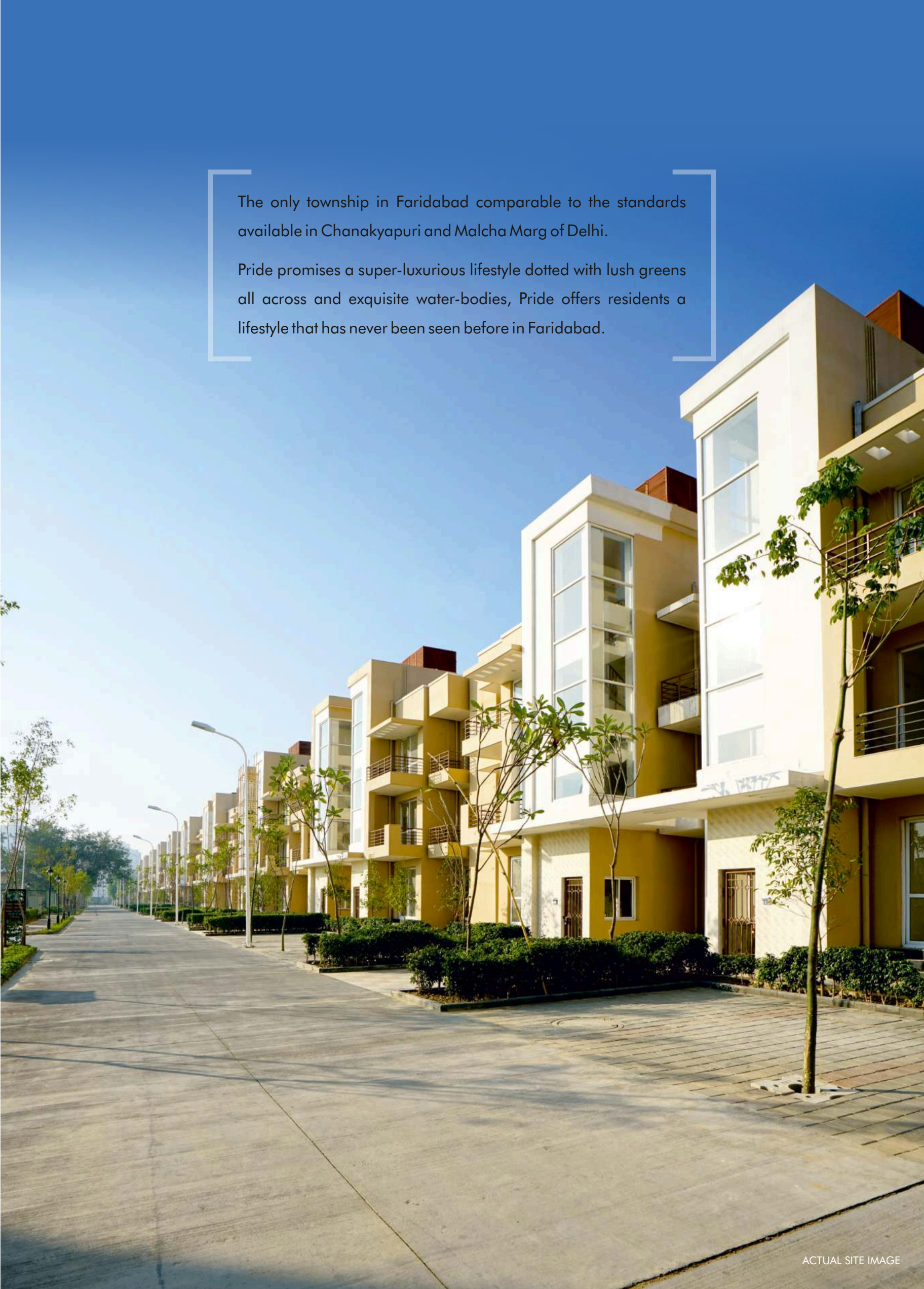
ACTUAL SITE IMAGE



ACTUAL SITE IMAGE

The only township in Faridabad comparable to the standards available in Chanakyapuri and Malcha Marg of Delhi.

Pride promises a super-luxurious lifestyle dotted with lush greens all across and exquisite water-bodies, Pride offers residents a lifestyle that has never been seen before in Faridabad.



ACTUAL SITE IMAGE



ACTUAL SITE IMAGE



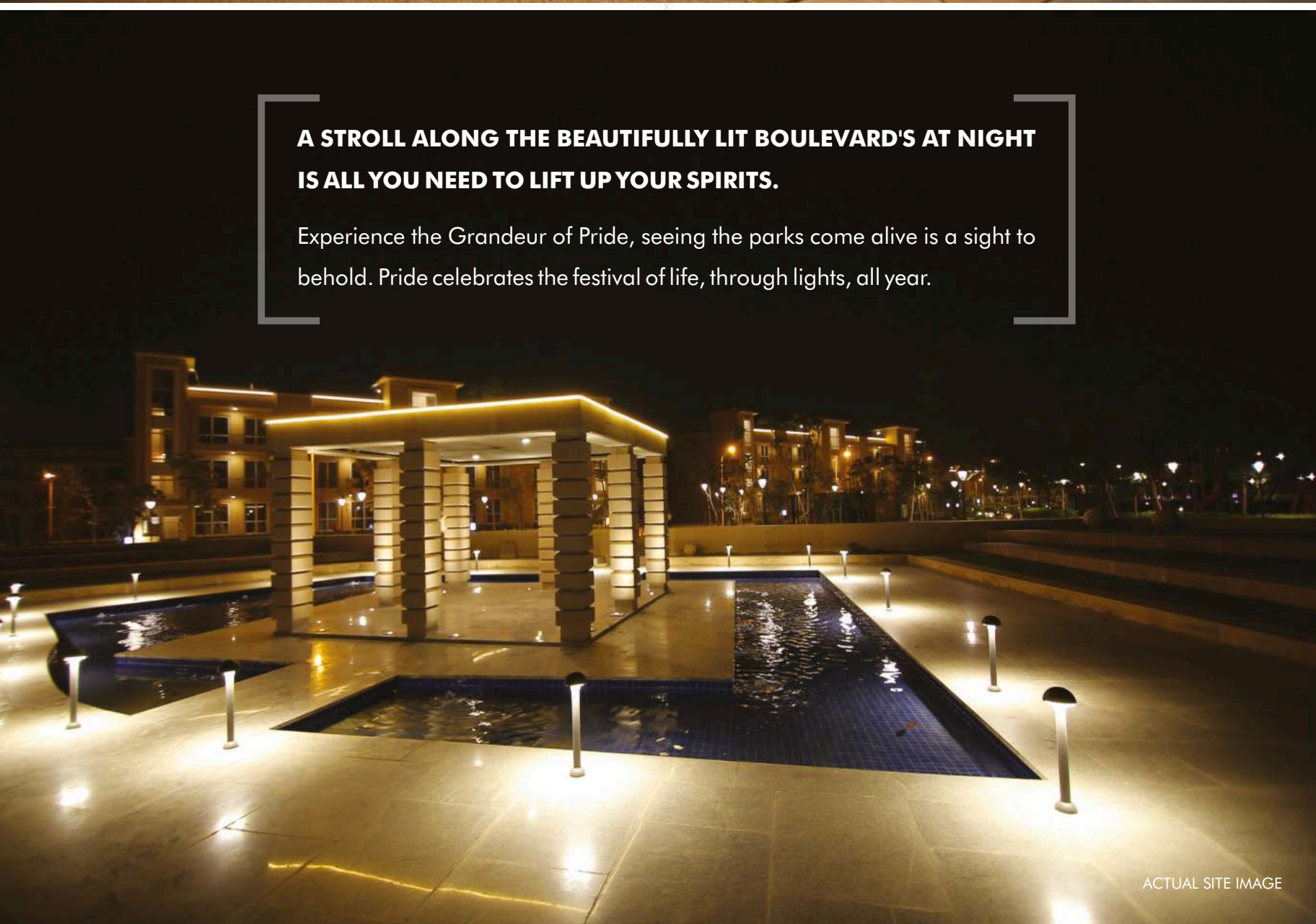
ACTUAL SITE IMAGE



ACTUAL SITE IMAGE



ACTUAL SITE IMAGE



ACTUAL SITE IMAGE

**A STROLL ALONG THE BEAUTIFULLY LIT BOULEVARD'S AT NIGHT  
IS ALL YOU NEED TO LIFT UP YOUR SPIRITS.**

Experience the Grandeur of Pride, seeing the parks come alive is a sight to behold. Pride celebrates the festival of life, through lights, all year.

## BLESSINGS PARK

Enjoy a walk along the **WELL-LIT PATHWAYS** or rejuvenate your soul amidst an oasis of water at your own **MEDITATION PAVILION** or just Unwind in the lavish greens and the beautiful hibiscus garden. This park also houses sports facilities and a play area for children.

## SERENITY GARDEN

Let your Imagination flow, nurture your body and soul with facilities like tree court, pavilion, kids play area, badminton court and much more.



# SPORTS ARENA 1, 2 & 3

These parks will consist of facilities like badminton courts, kids play areas, tree court with pavilion & an open air gym etc. Works on these parks is ongoing.

## PARKS UNDER DEVELOPMENT



BASKETBALL COURT



OPEN AIR GYM



KIDS PLAY AREA



BADMINTON COURT

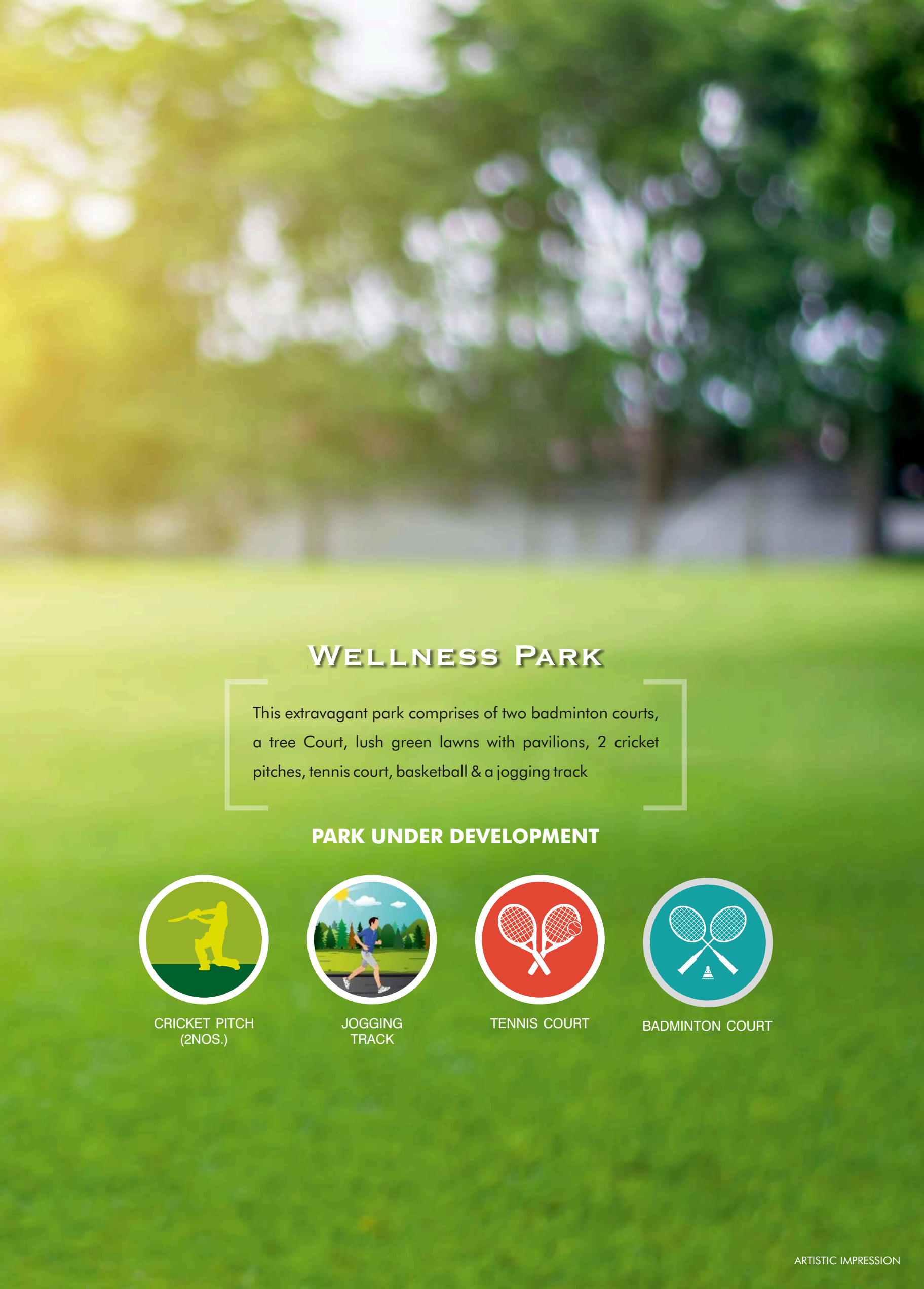
ARTISTIC IMPRESSION



ACTUAL SITE IMAGE



ACTUAL SITE IMAGE



## WELLNESS PARK

This extravagant park comprises of two badminton courts, a tree Court, lush green lawns with pavilions, 2 cricket pitches, tennis court, basketball & a jogging track

### PARK UNDER DEVELOPMENT



CRICKET PITCH  
(2NOS.)



JOGGING  
TRACK



TENNIS COURT



BADMINTON COURT

ARTISTIC IMPRESSION

## SMARTER GREENS



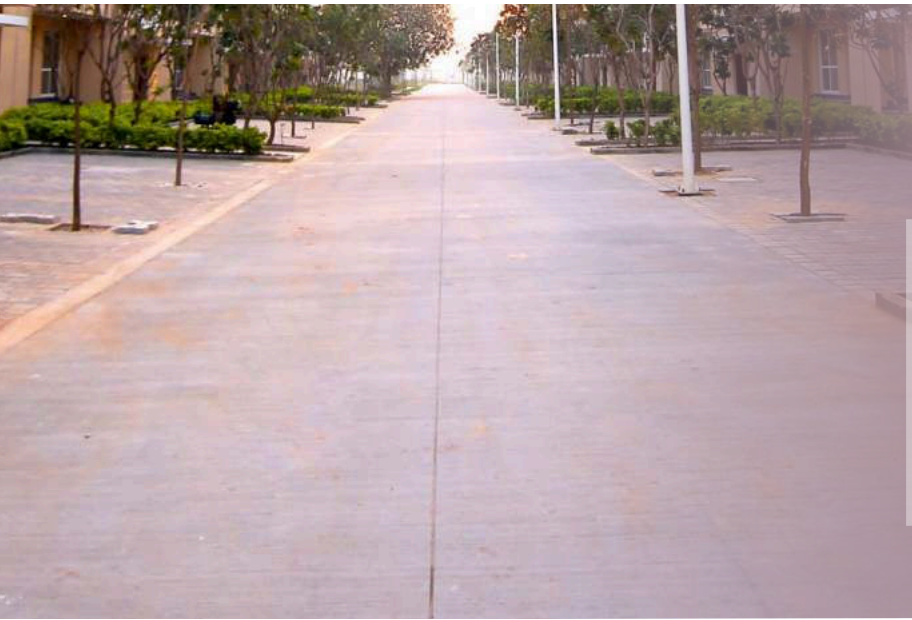
Smart maintenance technologies like **DRIP IRRIGATION AND SPRINKLERS** aided maintenance of green spaces have been incorporated across the parks which is not only energy efficient but also environmentally friendly.

Branded **EPDM SPORTS FLOORING** and **EQUIPMENT'S IMPORTED FROM KOCHI OF SOUTH KOREA** have been installed to make it an even safer environment for your child to play & grow.

OVER 2000 TREES PLANTED ACROSS THE TOWNSHIP

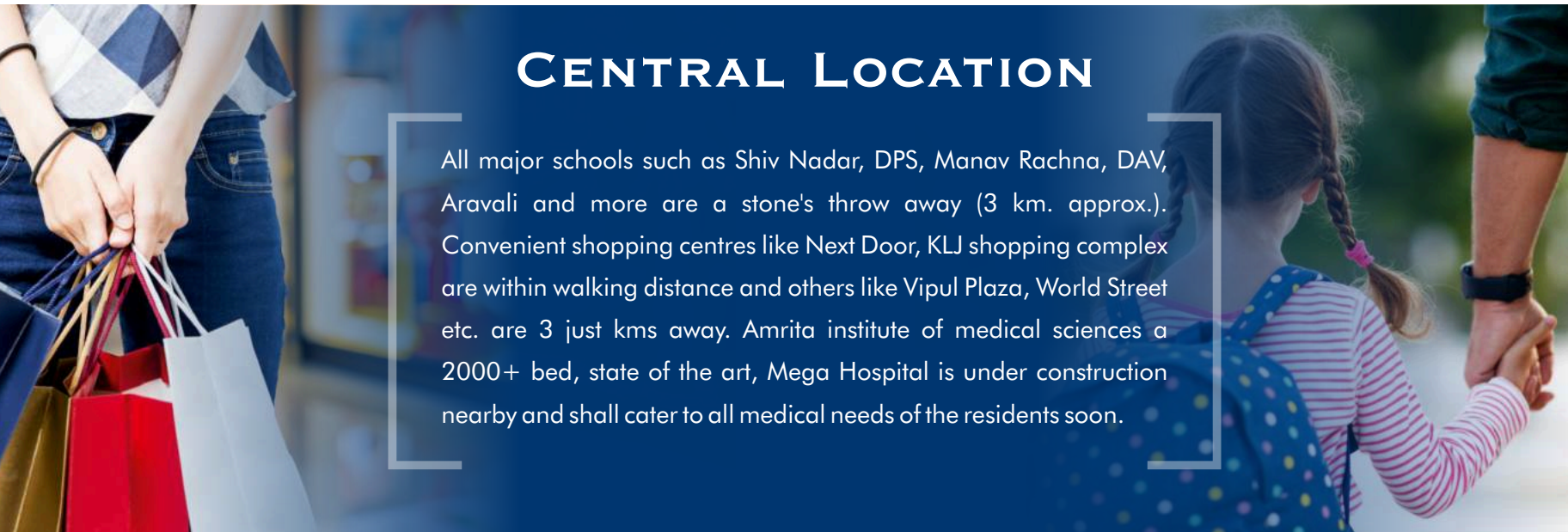
## EFFICIENT SECURITY

All entry/exit points of the township are manned round the clock and equipped with **CCTV CAMERA SYSTEMS** which are directly monitored from a central security centre. **VIDEO DOOR PHONES IN EACH APARTMENTS, BY GODREJ**, act as a 3rd layer of security.



## CONCRETE ROADS & EFFICIENT LIGHTING

All **INTERNAL ROADS HAVE BEEN DEVELOPED USING CONCRETE**. Paved pathways with layered greens provided for pedestrians. Street lighting has been designed to have maximum coverage to enhance the security and the aesthetic appeal of the township.

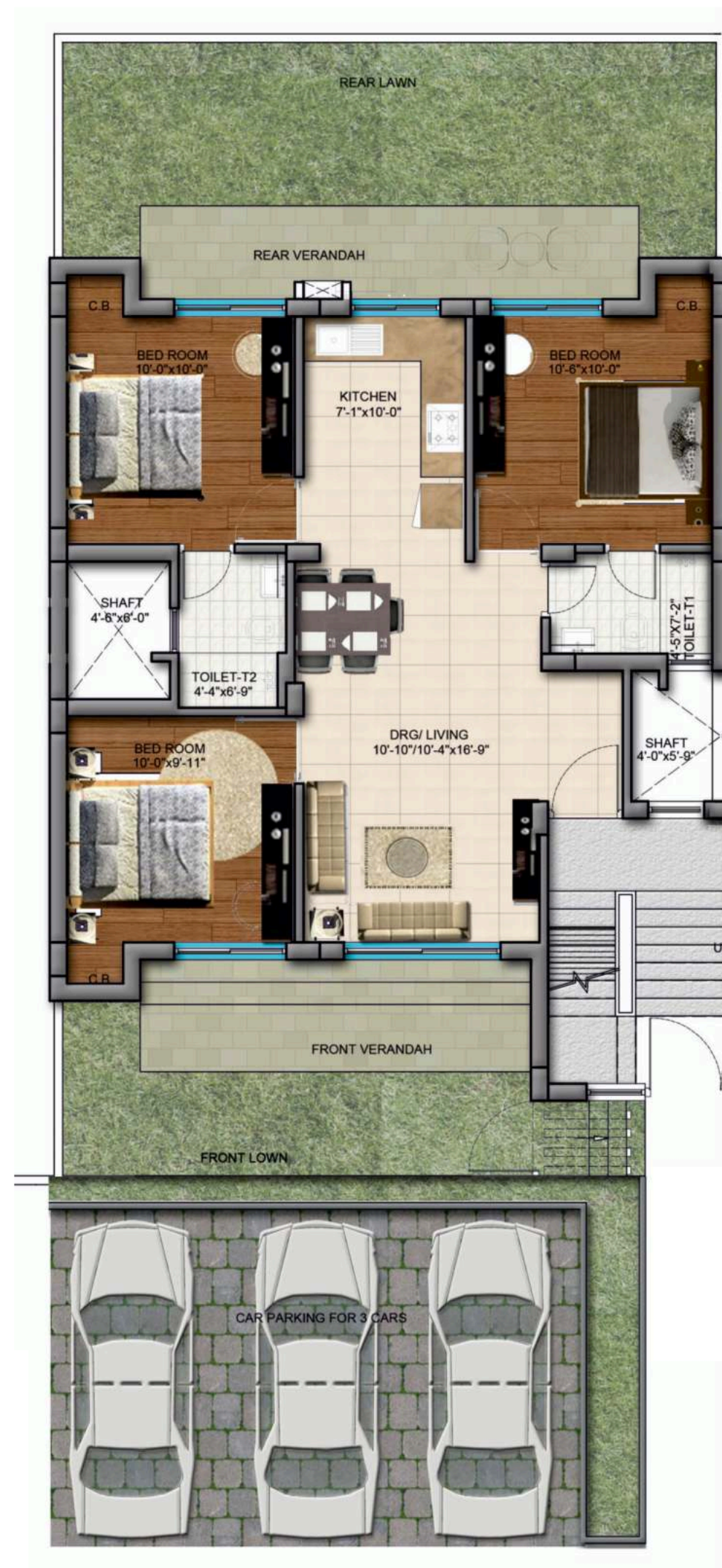


## CENTRAL LOCATION

All major schools such as Shiv Nadar, DPS, Manav Rachna, DAV, Aravali and more are a stone's throw away (3 km. approx.). Convenient shopping centres like Next Door, KLJ shopping complex are within walking distance and others like Vipul Plaza, World Street etc. are 3 just kms away. Amrita institute of medical sciences a 2000+ bed, state of the art, Mega Hospital is under construction nearby and shall cater to all medical needs of the residents soon.

# GROUND FLOOR PLAN

190 SQYDS (BUILT UP AREA = 1103 SQ.FT.)



(1SQ.FT. = 0.092 SQ.MT.)

# TYPICAL FIRST/SECOND FLOOR PLAN

190 SQYDS (BUILT UP AREA = 1103 SQ.FT.)



(1SQ.FT. = 0.092 SQ.MT.)

**GROUND FLOOR PLAN**  
250 SQYDS (BUILT UP AREA = 1382 SQ.FT.)



(1SQ.FT. = 0.092 SQ.MT.)

**TYPICAL FIRST/SECOND FLOOR PLAN**  
250 SQYDS (BUILT UP AREA = 1382 SQ.FT.)



(1SQ.FT. = 0.092 SQ.MT.)

# GROUND FLOOR PLAN

350 SQYDS (BUILT UP AREA = 1803 SQ.FT.)



(1SQ.FT. = 0.092 SQ.MT.)

# TYPICAL FIRST/SECOND FLOOR PLAN

350 SQYDS (BUILT UP AREA = 1803 SQ.FT.)



(1SQ.FT. = 0.092 SQ.MT.)

# SPECIFICATION

LIVING/DINING

Wall Finish :  
Painted in pleasing shades of plastic emulsion paint

Flooring :  
Vitrified tiles

BEDROOMS

Wall Finish :  
Painted in pleasing shades of plastic emulsion paint

Flooring :  
Laminated wooden flooring

BATHROOMS

Flooring :  
Ceramic tiles

Dado :  
Select ceramic tiles

Fixtures & Fittings :  
White sanitary ware, and contemporary chrome plated fittings

KITCHEN

Flooring :  
Vitrified tiles

Dado :  
Ceramic tiles up to 2 ft. above working platform and the rest painted in pleasing shades of plastic paint

Platform :  
Granite counter with single bowl stainless steel sink and drain board

BALCONY

Flooring :  
Anti Skid Ceramic Tiles

STAIRCASE

Flooring :  
Selected Marble

DOORS & WINDOWS

Doors :  
Seasoned hardwood frames with painted board shutters/Flush door with both side laminate

External Doors/Windows :  
UPVC

FACILITIES

Electrical :  
Electrical copper wiring in concealed conduits for all light and power points

Video Door Phones :  
By Godrej

Adequate Power Back-up



## SANCTUARY CLUB

The state-of-the-art Club will be equipped with a host of amenities ranging from a Multi-cuisine restaurant, Triple height Courtyard seating areas, a coffee bar & library, grand lounge and reception, gymnasium, card room, mini theatre, kids room, yoga studio, banquet hall, games room, TT & Billiards, a party terrace, swimming pool and kids pool with changing rooms.



\*Architects and the Developer reserve the right to alter the specifications and facilities for design improvement.



ACTUAL IMAGE



ACTUAL IMAGE



ACTUAL IMAGE



ACTUAL IMAGE



ACTUAL IMAGE



ACTUAL IMAGE

## ABOUT US

Having delivered over 21203 units across Delhi-NCR, BTP has been consistently working towards gratifying its customers. Over the past 15 years, with the launch of its flagship project “Parklands” in Faridabad and integrated luxury townships in Gurugram, BTP has created a range of sustainable and recognized developments, such as Amstoria, Astaire Gardens, Pride to name a few.

**DELIVERED 9844 HOMES**  
Since 2016 & Counting...