



In Association With



The project is registered as Godrej Five Gardens on MAHARERA bearing Registration No. P51900048424 available on MAHARERA website (<https://maharera.mahaonline.gov.in>). The Project is being developed by Godrej Projects Development Limited (GPDL) in association with Eskays Land Developers Private Limited (Eskays). Both Eskays and GPDL are registered as Promoters under MAHARERA with respect to the Project. Site address is Agrawal Nagar, Matunga East, Mumbai, Maharashtra 400059 and registered office of Developer is Godrej One, 5th floor, Pirojshanagar, Eastern Express Highway, Vikhroli (East), Mumbai 400 079. The Sale is subject to the terms of the Application Form and Agreement for Sale. All specifications of the unit shall be as per the Agreement for Sale. Customers are advised to apprise themselves of the necessary and relevant information of the project prior to making any purchase decisions. The official website of Godrej Properties Limited is www.godrejproperties.com. Please do not rely on the information provided on any other website. **T&C Apply** : Means : *No warranty is expressly or impliedly given that the completed development will comply in any degree with such artist's impression/stock image as depicted. The furniture, accessories, paintings, plantations, landscaping, items, electronic goods, additional fittings/fixtures, decorative items, false ceiling including finishing materials, specifications, shades, sizes and colour of the tiles, etc. shown in the image are only indicative in nature and are only for the purpose of illustrating/indicating a conceived layout and do not form part of the standard specifications/amenities/services to be provided in the unit and/or the Project. The specifications/amenities mentioned in the Agreement for sale and/or uploaded on RERA website shall be final and binding on the Developer and the Purchaser. *Th refers to drive time. Drive time refers to the approximate drive duration as provided above and the same is as per Google Maps recorded on 10th January, 2023 at 6 am.



"I want a home like no other",
said the heart

*"I'll build you one with legacy
and trust",*
replied the home

The Godrej story began in 1897, with the manufacturing of locks. Since then, we have set several benchmarks. From a state-of-the-art manufacturing facility in a suburb of Mumbai, we've reached homes, offices, industries and the hearts

of millions of people in India and around the world. With a proud tradition of many firsts, we find ourselves at work every day, building on the foundation of trust that was laid 125 years ago.



Actual photograph of Godrej One situated at Vikhroli East, Mumbai.

"What makes one a winner?",
questioned the heart

*"The ability to win hearts,
and awards",*
smiled the home

The Most Trusted
Real Estate Brand
Brand Trust Report, 2019

Real Estate
Company of the Year

8th Annual Construction
Week India Awards 2019

Builder of the Year
CNBC – Awaaz Real Estate
Awards 2019

Builder of the Year
CNBC – Awaaz Real Estate
Awards 2018

Best Real Estate
Brand 2018
The Economic Times

Best Real Estate
Brand 2018
Construction World Architect
and Builder (CWAB) Awards 2018

The Golden Peacock
National Quality Award 2017

Institute of Directors
27th World Congress on Business
Excellence and Innovation



Actual photograph of Godrej One situated at Vikhroli East, Mumbai.

"I want to be closer to the world",
exclaimed the heart

"So be it",
said the home

A bustling location in Mumbai, Matunga is a melting pot of culture, heritage and ease of connectivity. Surrounded by renowned schools, reputed hospitals, business centers and ample recreational hubs, Matunga is a spectacular blend of a residential and commercial set-up.

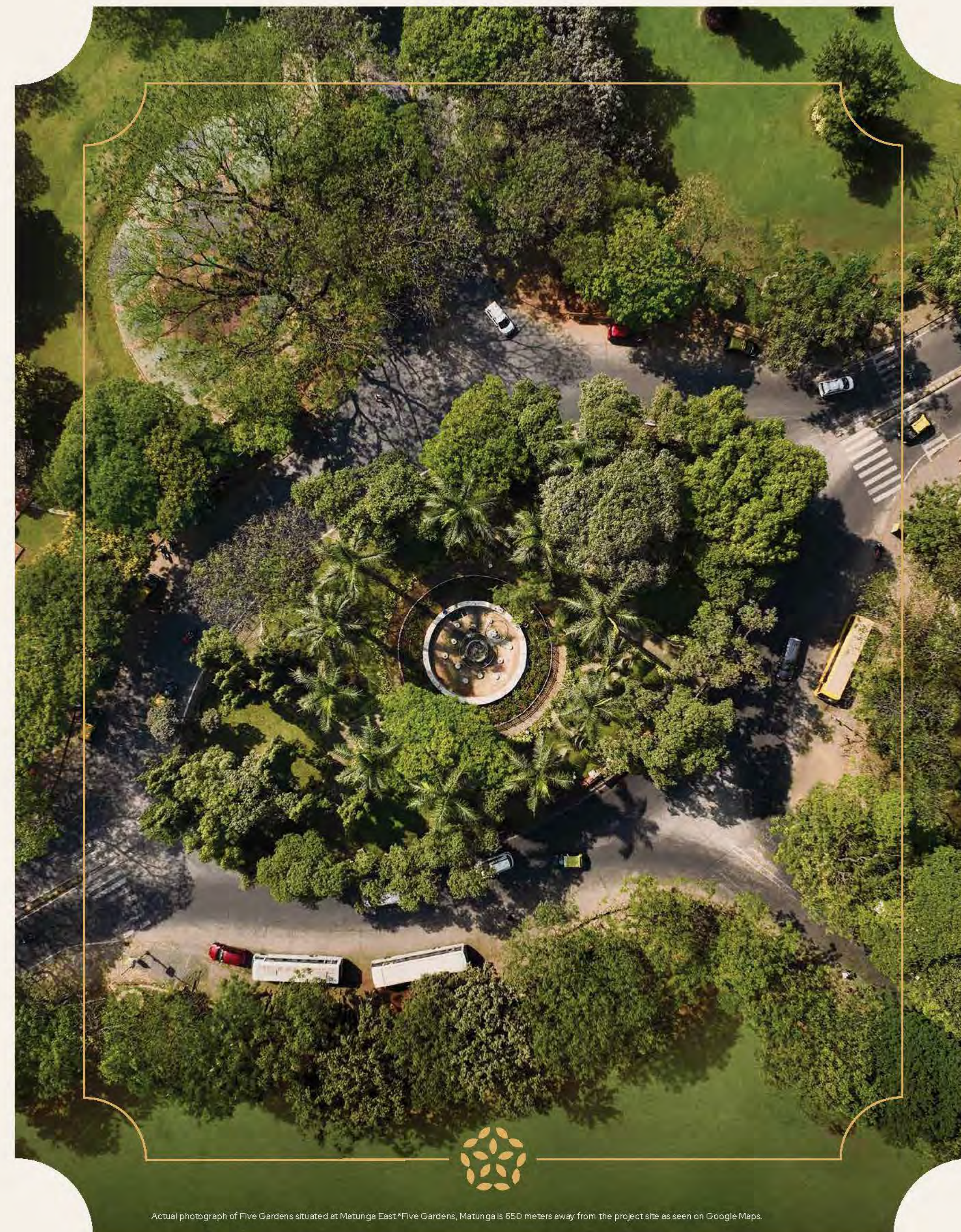


Actual view from the site captured at the height of 120 meters.

"Oh, how much I love gardens",
said the heart

"Here, take 5 of them",*
replied the home

Five Gardens, situated at Matunga East, developed by the British in the 1890s, is one of the first planned layouts in Mumbai, that boasts of an exquisite lifestyle, and is within 400 mtrs. of walking distance.



Actual photograph of Five Gardens situated at Matunga East*Five Gardens, Matunga is 650 meters away from the project site as seen on Google Maps.

"I want a piece of history",
sighed the heart

"I'll bring them all to you",
replied the home

Live amidst timeless landmarks that
have stood the test of time

The Indian Gymkhana Matunga
6 min drive time*

The Dadar Parsi Gymkhana
3 min drive time*

The Matunga Gymkhana
3 min drive time*

The Matunga Gujarati Club
6 min drive time*

*Drive time refers to the approximate drive duration as provided above and the same is as per Google Maps recorded on 10th January, 2023 at 6 am.



*"I wish to learn something
new every day",*

said the heart

"Consider it done",

replied the home

VJTI

2 min drive time*

Podar College of Commerce and Economics

3 min drive time*

Welingkar Institute of Management

3 min drive time*

Ramnarain Ruia College

3 min drive time*

Guru Nanak Khalsa College

3 min drive time*

The JB Vachha Girls High School

3 min drive time*

ICT (Institute of Chemical Technology)

4 min drive time*

Don Bosco High School

6 min drive time*

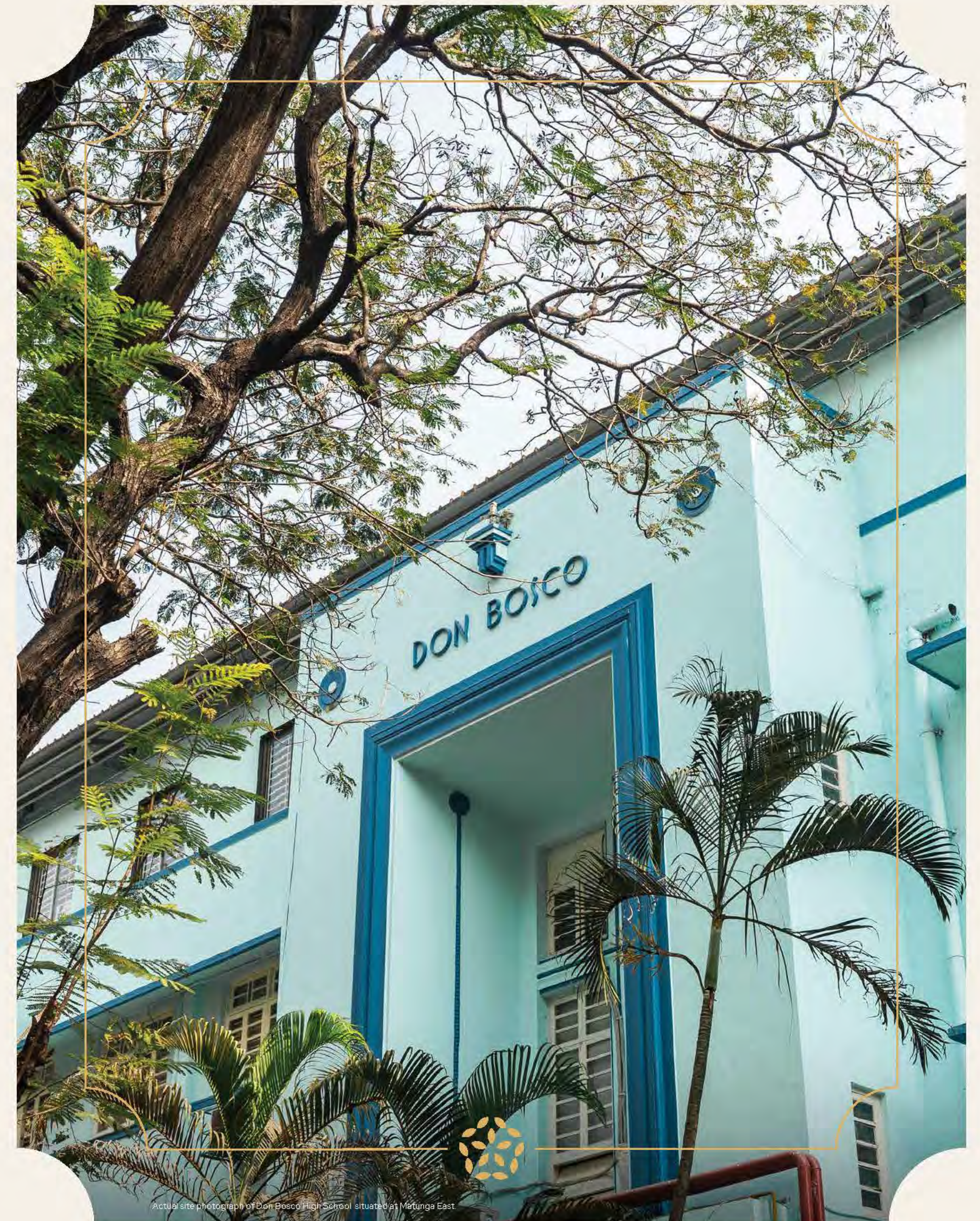
Bombay Scottish School

9 min drive time*

JBCN International School

10 min drive time*

*Drive time refers to the approximate drive duration as provided above and the same is as per Google Maps recorded on 10th January, 2023 at 6 am.



Actual site photograph of Don Bosco High School situated at Matunga East.

"I always want to be cared for",
mused the heart

"That's exactly how I intend it to be",
smiled the home

KEM Hospital
8 min drive time*

Tata Memorial Hospital
6 min drive time*

Global Hospital
8 min drive time*

*Drive time refers to the approximate drive duration as provided above and the same is as per Google Maps recorded on 10th January, 2023 at 6 am.



Stock image for representative purpose only. No warranty is expressly or impliedly given that the completed development will comply in any degree with such stock image as depicted.

*"I want a place that fosters
my ambitions",*

expressed the heart

"I have just the thing",
answered the home

Proximity to commercial hubs like

BKC
15 min*

Masjid Bandar
25 min*

Parel
25 min*

Fort
25 min*

Worli
20 min*

*Drive time refers to the approximate drive duration as provided above and the same is as per Google Maps recorded on 10th January, 2023 at 6 am.



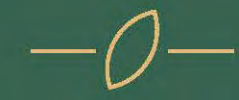
Stock image for representative purpose only. No warranty is expressly or impliedly given that the completed development will comply in any degree with such stock image as depicted.

"I wish life came with a map",
sighed the heart

"Say no more",
grinned the home



THE QUAIN'T WORLD OF FIVE GARDENS



Connectivity

1. Eastern Express Highway
2. Jame Jamshed Road



Education

3. VJTI
4. Khalsa College
5. Don Bosco High School
6. Ramnivas Ruia College
7. RA Podar College



Parks

8. Five Gardens
9. Maheswari Udhyan
10. Nappu Garden
11. Kedarnath Udhyan



Recreation

12. Matunga Gymkhana
13. Dadar Parsi Gymkhana
14. Indian Gymkhana
15. Matunga Gujrati Club



Iconic Restaurants

16. Café Mysore
17. Café Madras
18. Koolar and Co
19. Mani's Cafe
20. Ram Ashraya

Source: Google Maps. Map not to scale.



Presenting



*"Where will my life bloom
with happiness?"*

asked the heart

*"In a home I call
Godrej Five Gardens",*

said the heart

Welcome home to Godrej Five Gardens, the home of the heart that's throbbing with love and thriving with happiness. Where the warmth never ceases and the joy never ends. Where you'll find your favourite people, make your favourite moments at your favourite place – home. Because this where the heart is, and the heart is always in the right place.



Artist impression, not an actual site image. No warranty is expressly or impliedly given that the completed development will comply in any degree with such artist's impression as depicted.

"I wish I had a home with a view",
sighed the heart

"I'll make it happen",
said the home

Surrounded by the brilliance of greens, this place is blessed with stunning views that will thrill your heart, mesmerize your mind and calm your soul, all at once.

Actual view from site captured at the height of 120 meters. Views from limited units only.

**SOUTH-WEST VIEW FROM THE DECK OF THE
3-BED IMPERIAL APARTMENT ^**



Actual view from site captured at the height of 120 meters. ^Views from limited units only.

**NORTH-EAST VIEW FROM THE DECK OF THE
3-BED IMPERIAL APARTMENT ^**



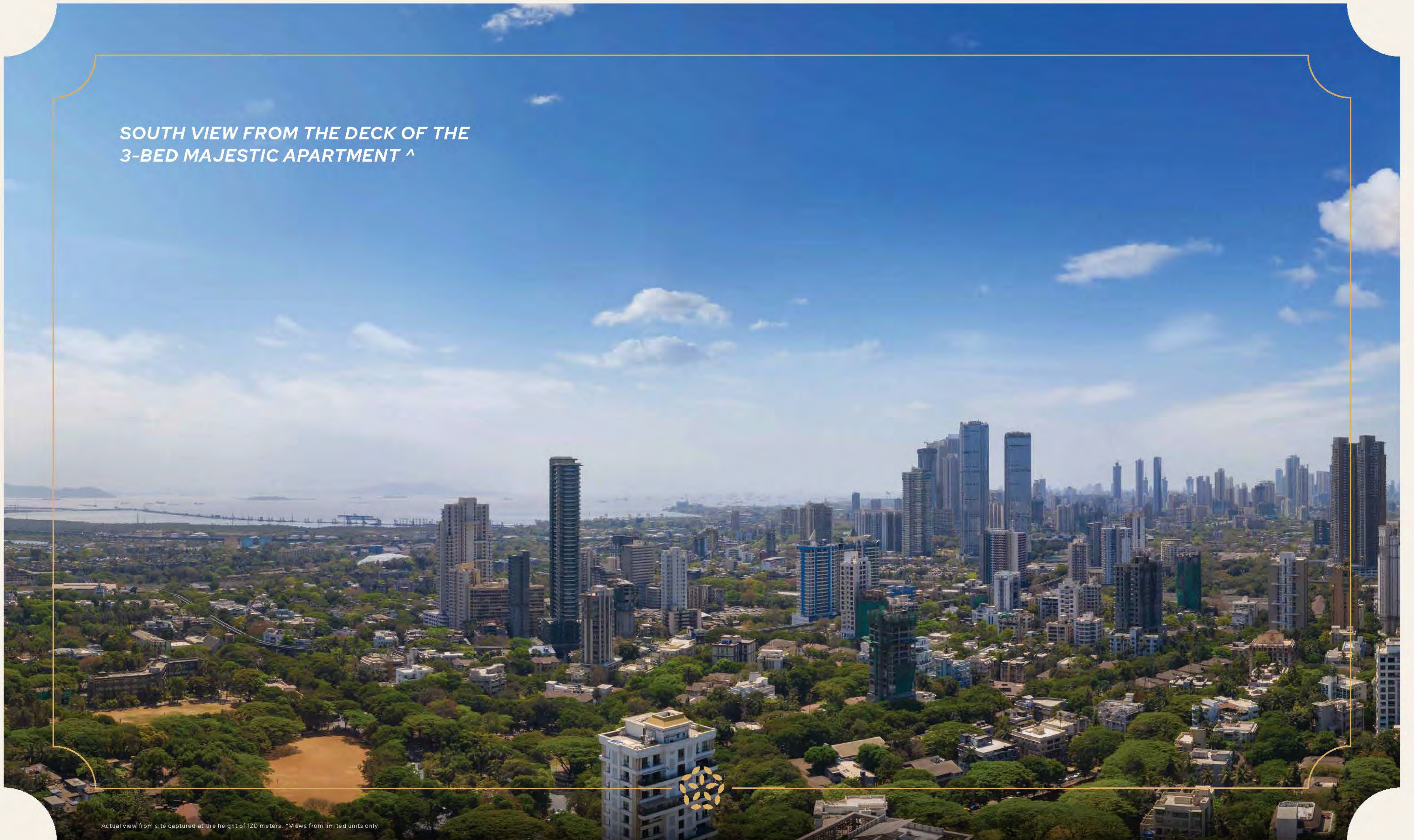
Actual view from site captured at the height of 120 meters. ^ Views from limited units only.

**SOUTH-EAST VIEW FROM THE DECK OF THE
3-BED MAJESTIC APARTMENT ^**



Actual view from site captured at the height of 120 meters. ^Views from limited units only.

*SOUTH VIEW FROM THE DECK OF THE
3-BED MAJESTIC APARTMENT ^*



Actual view from site captured at the height of 120 meters. ^ Views from limited units only.

*"Give me one reason why
I'll love this home",*
challenged the heart

"I'll give you more than one",
smiled the home

Your home at Godrej Five Gardens
comes with exceptional features:



Three-sided open home for
cross ventilation & natural light



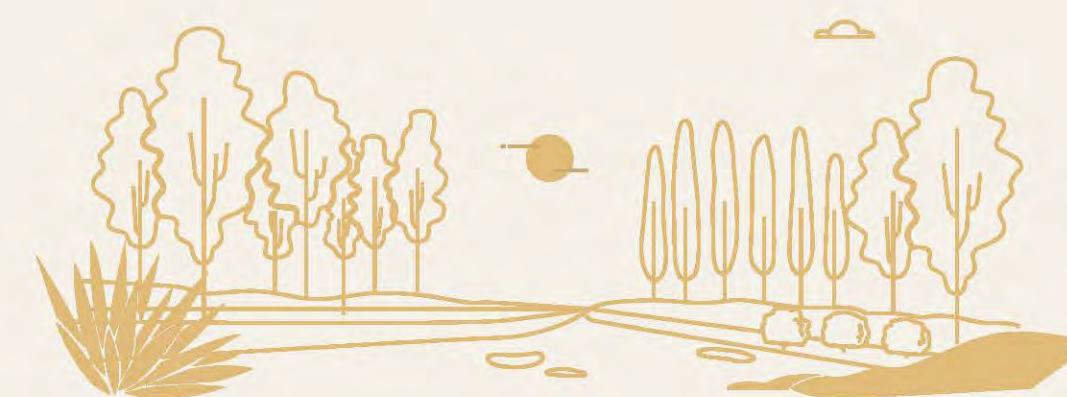
Grand entrance lobby



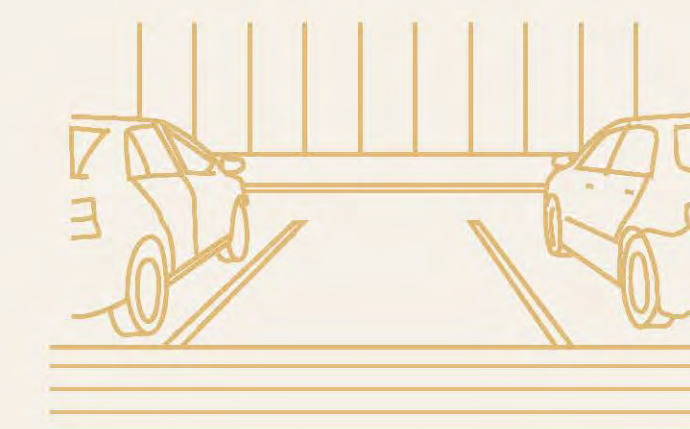
Spacious homes



Private deck with view



Open spaces & amenities
spread across three levels



Three surface car park per home



All illustrations are artistic impression. No warranty is expressly or impliedly given that the completed development will comply in any degree with such artist's impression as depicted

"How will you make me feel special?",
asked the heart

"By giving you a slice of paradise",
smiled the home

If you're craving for me-time, you're sure to find it on your very own private deck that comes with stellar views of the city to keep you company, all day, every day.



Artist impression, not an actual site image. The furniture, accessories, painting, decoration, air conditioning, items, electronic goods, additional fittings/fixtures, decorative items, false ceiling, lighting, flooring, materials, appliances, shades, doors and colour of the walls shown in the image are only indicative in nature and are only for the purpose of illustrating/indicating a conceived layout and do not form part of the standard specifications/amenities/services to be provided in the unit and/or the Project. The specifications/amenities mentioned in the Agreement for sale and/or uploaded on RERA website shall be final and binding on the Developer and Purchaser.

“What I’d really love is an airy home”,
said the heart

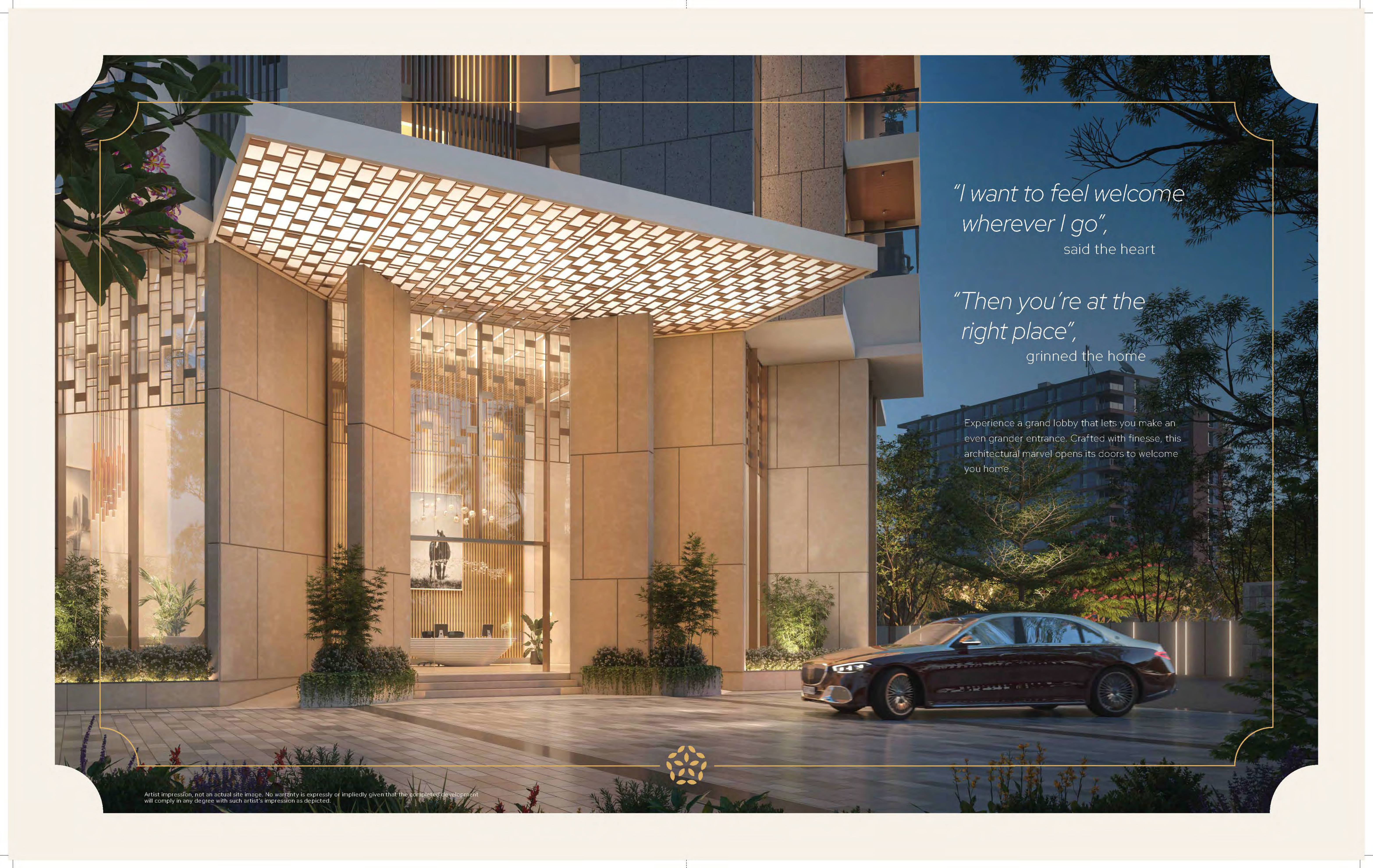
“Consider it done”,
replied the home

Revel in the easy, breezy feeling of a well-ventilated home that promises the freshest, most refreshing breeze from 3 sides, and an abundance of warm, happy sunlight.*

*For Limited Units Only



Artist impression, not an actual site image. No warranty is expressly or impliedly given that the completed development will comply in any degree with such artist's impression as depicted.



*"I want to feel welcome
wherever I go",*
said the heart

*"Then you're at the
right place",*
grinned the home

Experience a grand lobby that lets you make an even grander entrance. Crafted with finesse, this architectural marvel opens its doors to welcome you home.



Artist impression, not an actual site image. No warranty is expressly or impliedly given that the completed development will comply in any degree with such artist's impression as depicted.

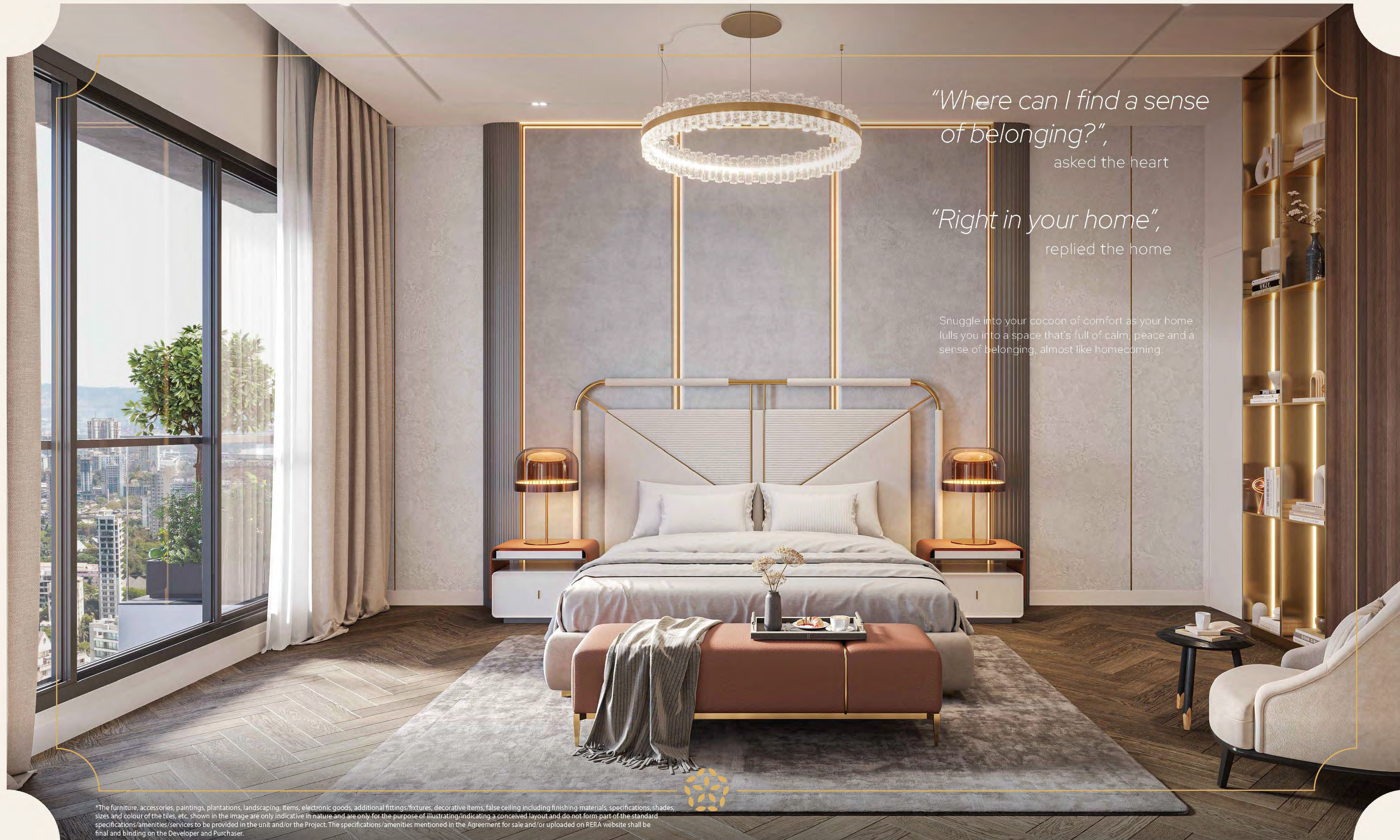
"What does home feel like?",
asked the heart

"It feels as perfect as this place",
smiled the home

Sit back, relax and let your home treat you to an abundance of luxuries, joy and space, to hold more than enough memories to last you for a lifetime.

*The furniture, accessories, paintings, plantations, landscaping, items, electronic goods, additional fittings/fixtures, decorative items, false ceiling including finishing materials, specifications, shades, sizes and colour of the tiles, etc. shown in the image are only indicative in nature and are only for the purpose of illustrating/indicating a conceived layout and do not form part of the standard specifications/amenities/services to be provided in the unit and/or the Project. The specifications/amenities mentioned in the Agreement for sale and/or uploaded on RERA website shall be final and binding on the Developer and Purchaser.





*"Where can I find a sense
of belonging?",*
asked the heart

"Right in your home",
replied the home

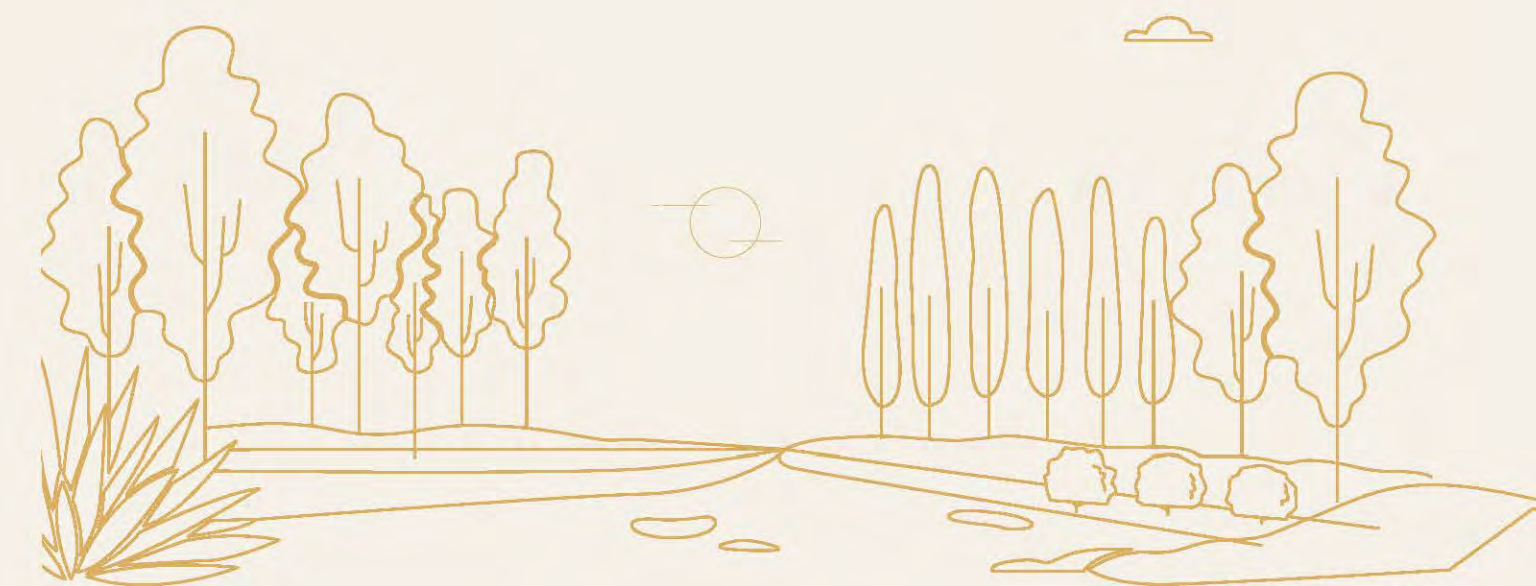
Snuggle into your cocoon of comfort as your home
lulls you into a space that's full of calm, peace and a
sense of belonging, almost like homecoming.

*The furniture, accessories, paintings, plantations, landscaping, items, electronic goods, additional fittings/fixtures, decorative items, false ceiling including finishing materials, specifications, shades, sizes and colour of the tiles, etc. shown in the image are only indicative in nature and are only for the purpose of illustrating/indicating a conceived layout and do not form part of the standard specifications/amenities/services to be provided in the unit and/or the Project. The specifications/amenities mentioned in the Agreement for sale and/or uploaded on RERA website shall be final and binding on the Developer and Purchaser.

"Can I have all the comforts of life?",
asked the heart

"Yes, and a lot more too",
smiled the home

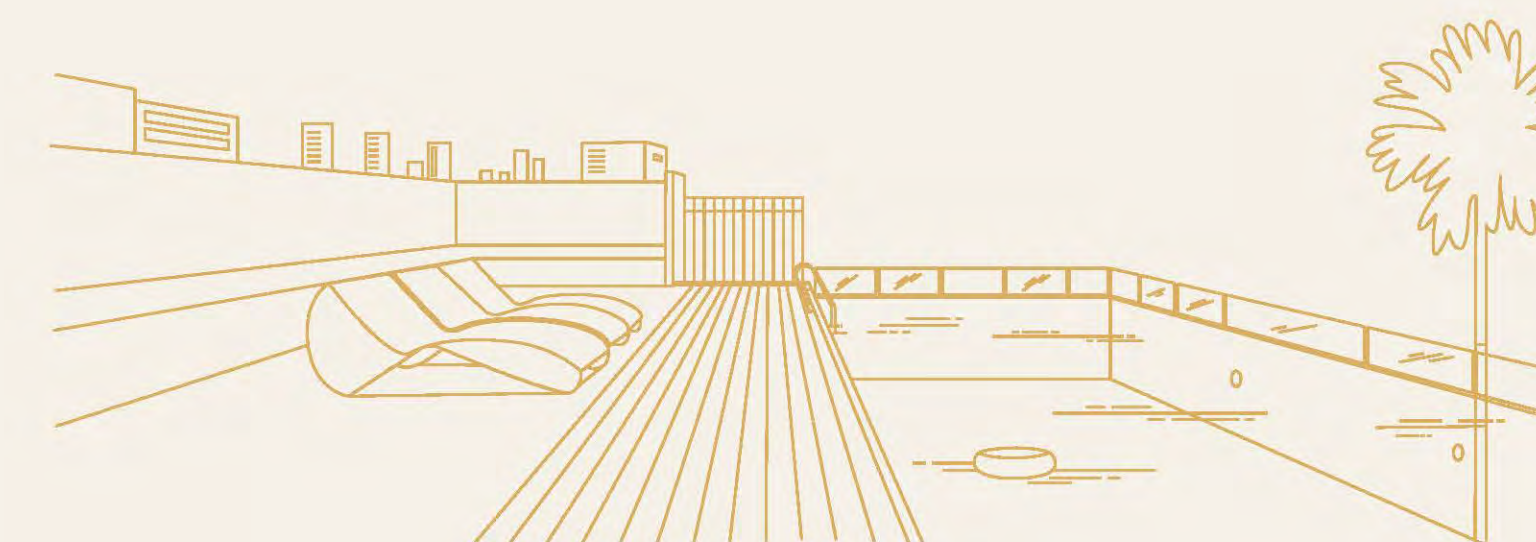
At this home, there are an array of amenities waiting to pamper you, indulge you and make every moment worthwhile. With amenities spread across three levels, you'll be spoilt for choice.



THE WORLD OF GREENS AT THE GROUND LEVEL



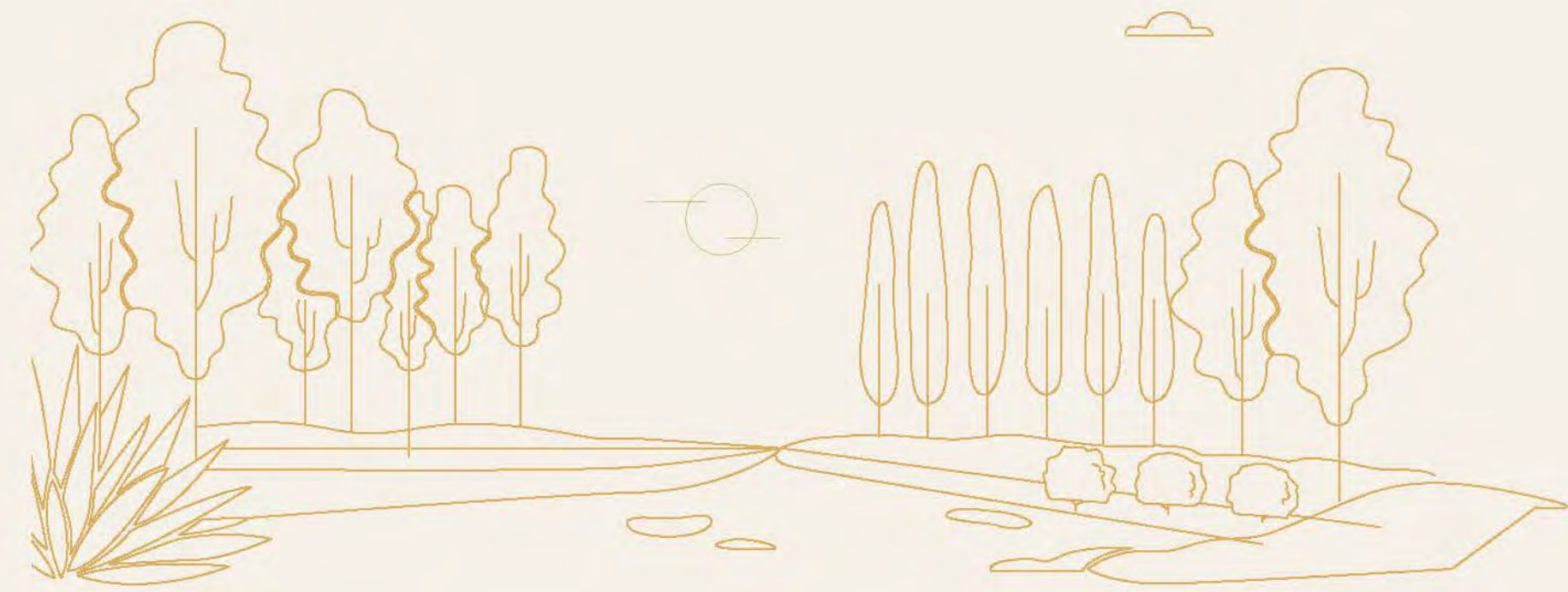
THE ACTIVITY WORLD AT THE PODIUM LEVEL



THE SKY WORLD AT THE ROOFTOP LEVEL



All illustrations are artistic impression. No warranty is expressly or impliedly given that the completed development will comply in any degree with such artist's impression as depicted.



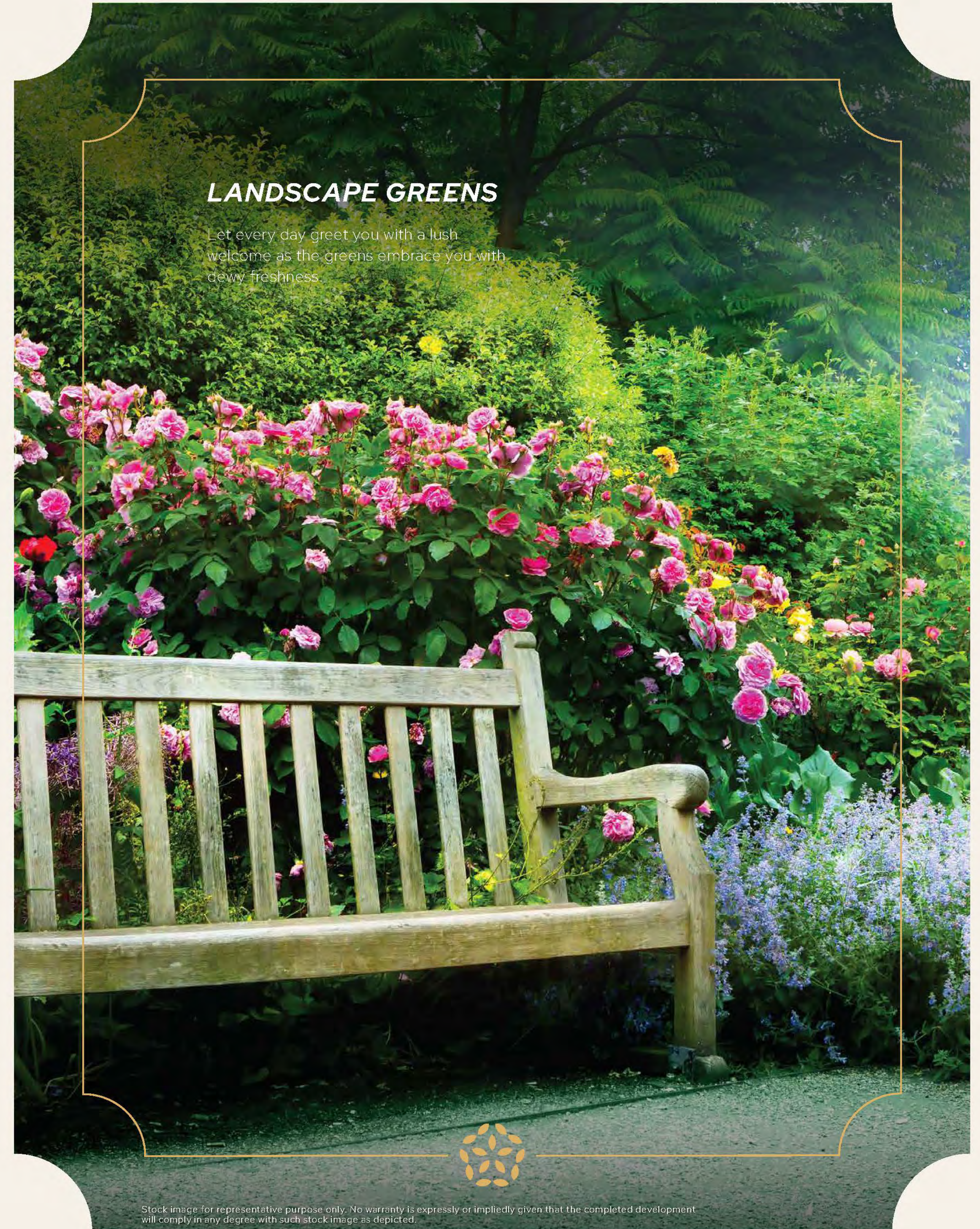
THE WORLD OF GREENS AT THE GROUND LEVEL



The above illustration is artistic impression. No warranty is expressly or impliedly given that the completed development will comply in any degree with such artist's impression as depicted.

LANDSCAPE GREENS

Let every day greet you with a lush welcome as the greens embrace you with dewy freshness.



Stock image for representative purpose only. No warranty is expressly or impliedly given that the completed development will comply in any degree with such stock image as depicted.

MULTIPURPOSE PLAY COURT

There's no such thing like too much play. Exactly why, the Multipurpose Play Court has everything your little ones need, to have all the fun they want, all day long.

Artist Impression, not an actual site image. No warranty is expressly or impliedly given that the completed development will comply in any degree with such artist's impression as depicted.

JOGGING TRACK

Here's a home that will help you keep your health on track. Equipped with a Jogging Track and surrounded by refreshing greens, it's all the reason you need to run the extra mile.

Artist impression, not an actual site image. No warranty is expressly or impliedly given that the completed development will comply in any degree with such artist's impression as depicted.

PET PARK

If you've got a pet, we've got just the place. Bring your beloved pooch to our Pet Park and let them revel in the joy of ample space and ample greens.



Stock image for representative purpose only. No warranty is expressly or impliedly given that the completed development will comply in any degree with such stock image as depicted.



THE ACTIVITY WORLD AT THE PODIUM LEVEL



The above illustration is artistic impression. No warranty is expressly or impliedly given that the completed development will comply in any degree with such artist's impression as depicted.

MULTIPURPOSE LAWN

Gather around the Multipurpose Lawn and take in a ton of space and greens as you plan your evening with a ton of fun.



Stock image for representative purpose only. No warranty is expressly or impliedly given that the completed development will comply in any degree with such stock image as depicted.

SWIMMING POOL

Give in to the temptation of lazing in pool of cool blue as you bid adieu to a week of stress and unwind in your oasis of calm and quiet.



Artist impression, not an actual site image. No warranty is expressly or impliedly given that the completed development will comply in any degree with such artist's impression as depicted.

SENIOR CITIZEN SEATING

The perfect place to sit back, relax and watch the world go by, share stories and probably even a cup of tea. Getting older does have its perks at the Senior Citizen Seating.



Stock image for representative purpose only. No warranty is expressly or impliedly given that the completed development will comply in any degree with such stock image as depicted.

WORK FROM THE GARDEN

If you're tired of looking at your screen, it's time to fill your life with greens. Discover the joy of working amidst the greens as nature gives company all through.



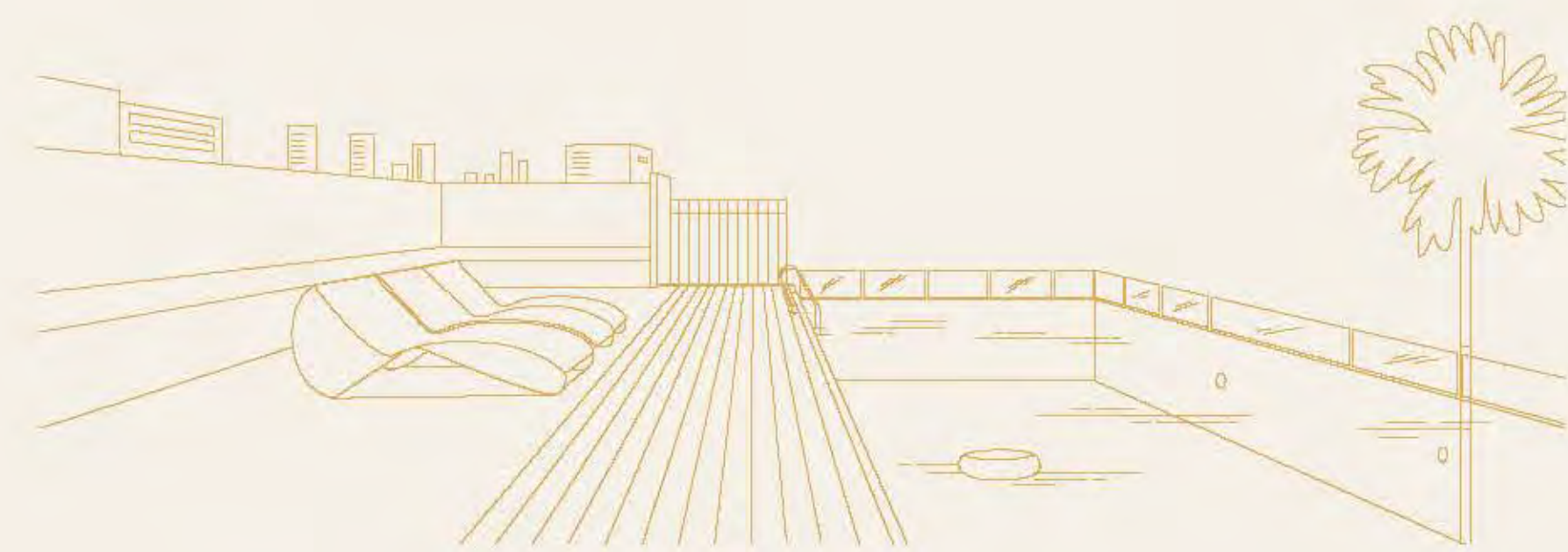
Stock image for representative purpose only. No warranty is expressly or impliedly given that the completed development will comply in any degree with such stock image as depicted.

CREATIVE CORNER

Creativity needs no place yet we have the perfect spot that inspires imagination and innovation. Come to the Creative Corner and discover so much more.



Stock image for representative purpose only. No warranty is expressly or impliedly given that the completed development will comply in any degree with such stock image as depicted.



THE SKY WORLD AT THE ROOFTOP LEVEL



The above illustration is artistic impression. No warranty is expressly or impliedly given that the completed development will comply in any degree with such artist's impression as depicted.

INFINITY EDGE POOL

At this place, there's no place for boredom. Dive into fun, lounge around or spend time with your friends doing absolutely nothing, the Infinity Edge Pool will never disappoint.



Artist impression, not an actual site image. No warranty is expressly or impliedly given that the completed development will comply in any degree with such artist's impression as depicted.

SKY LOUNGE

Spend the best of times under the open sky only at the Sky Lounge. Enjoy sun-kissed mornings or starlit evenings, either way, the sky will always be your constant companion.



Artist impression, not an actual site image. No warranty is expressly or impliedly given that the completed development will comply in any degree with such artist's impression as depicted.

YOGA LAWN

Staying healthy has never looked better. Sprawl on the lush green lawn and indulge in a fit way of life only at the Yoga Lawn.



Stock image for representative purpose only. No warranty is expressly or impliedly given that the completed development will comply in any degree with such stock image as depicted.

STAR GAZING DECK

Watch the night light up and fill you with awe as you stand under a carpet of stars and enjoy a show of the sparkling sky at the Star Gazing Deck.



Stock image for representative purpose only. No warranty is expressly or impliedly given that the completed development will comply in any degree with such stock image as depicted.

SKY GYM

Staying fit is easy when you have so much encouragement all around. The Sky Gym here is equipped with all that you need for a healthy mind and body.



Stock image for representative purpose only. No warranty is expressly or impliedly given that the completed development will comply in any degree with such stock image as depicted.

INDOOR GAMES

Life's all about fun and games. Here, you'll find an array of Indoor Games that'll give you every reason to be a sport and make the most of life.



Stock image for representative purpose only. No warranty is expressly or impliedly given that the completed development will comply in any degree with such stock image as depicted.



Artist impression, not an actual site image. No warranty is expressly or impliedly given that the completed development will comply in any degree with such artist's impression as depicted.