

SPECTACULAR, GRAND  
*resort style living*

Artistic Impression

**SMART WORLD**  
**ONE DXP**

SMART CITY DELHI AIRPORT, SECTOR 113, GURUGRAM

WELCOME TO HOMES  
THAT FEEL *like a resort*

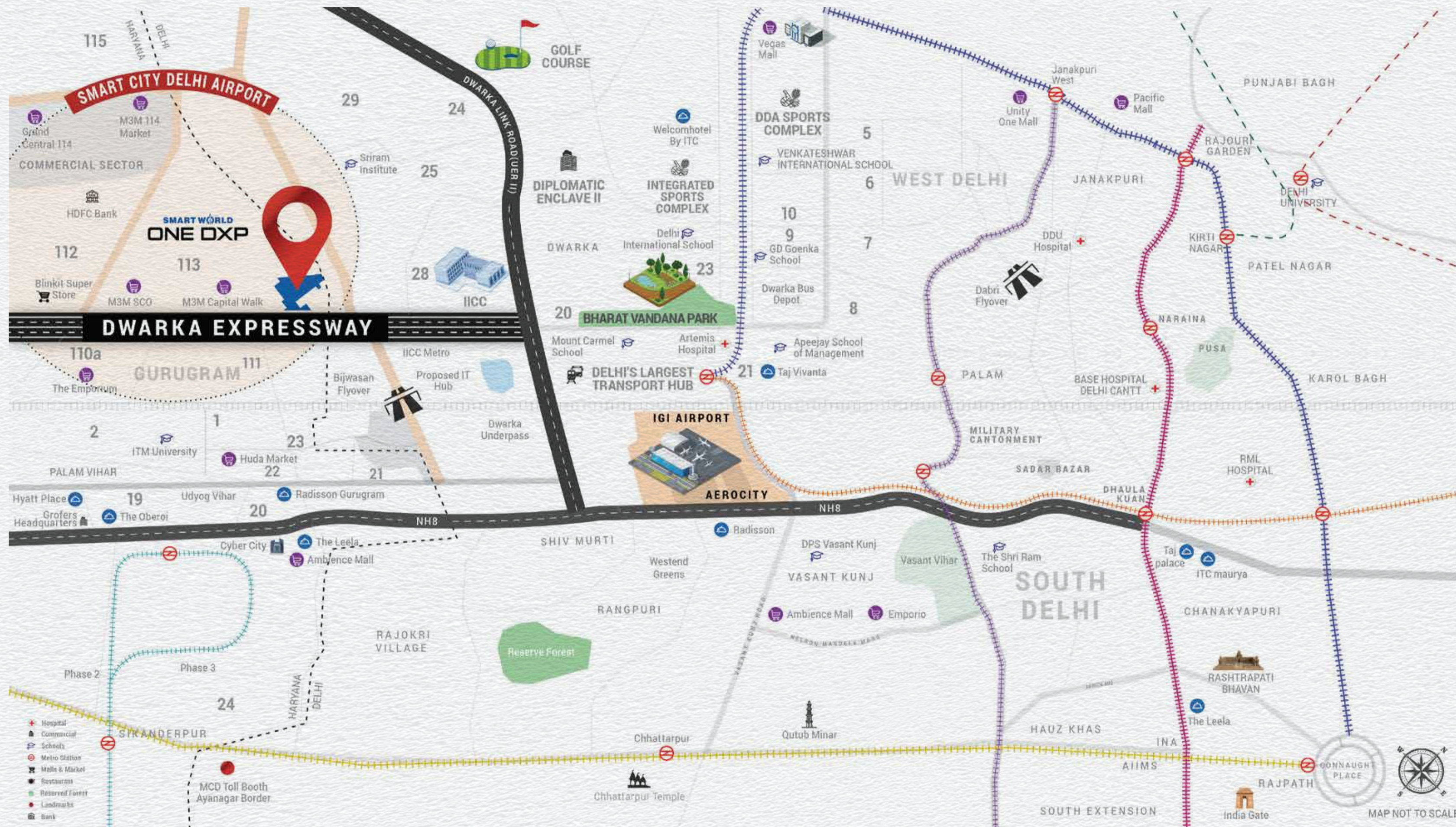
OPPORTUNITY TO EMBRACE  
THE EXTRAORDINARY



- STRATEGICALLY LOCATED AT THE FIRST ADDRESS ON DWARKA EXPRESSWAY
- RESORT LIFESTYLE AMENITIES
- BALCONIES WITH MESMERISING VIEWS OVERLOOKING THE CENTRAL RESORT VISTA
- LARGE DECK HOMES
- 3.5 & 4.5 BHK FINGER TOUCH AUTOMATED HOMES
- AQUA & TERRA AMUSEMENT AREAS FOR KIDS
- SPECIAL ZONES FOR SENIOR CITIZENS
- TRULY WORLD-CLASS SOCIAL & SPORTS CLUBS

A LOCATION THAT IS  
*unmatched*

THE BEST OF BOTH WORLDS,  
DELHI AND GURUGRAM



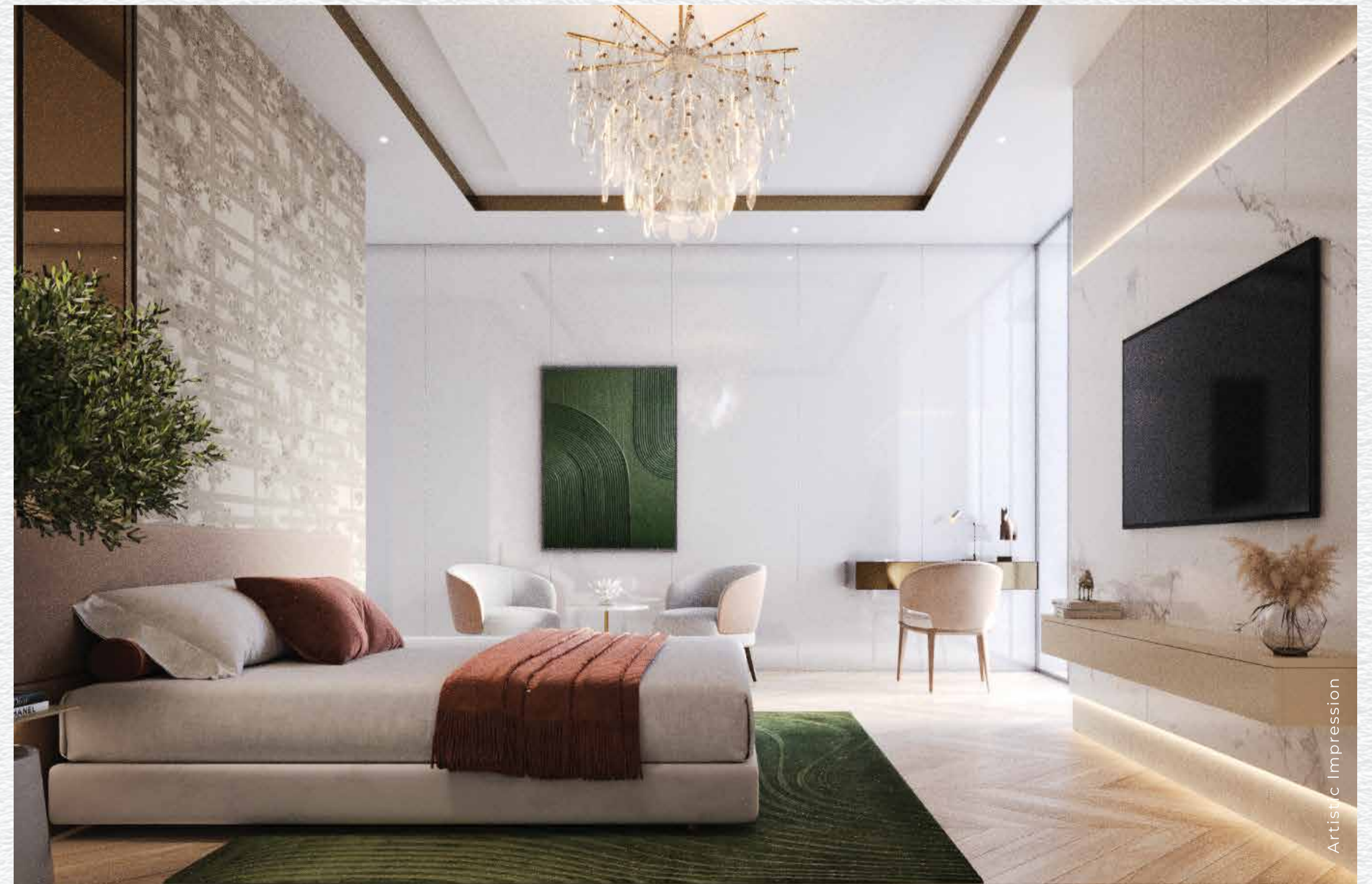
-  **3 MINS TO ASIA'S LARGEST CONVENTION AND EXHIBITION CENTRE\***
-  **5 MINS TO DIPLOMATIC ENCLAVE II\***
-  **7 MINS TO IGI AIRPORT\***
-  **7 MINS TO DELHI'S LARGEST TRANSPORTATION HUB\***
-  **15 MINS TO INTEGRATED SPORTS COMPLEX\***
-  **20 MINS TO SOUTH DELHI\***

\*SOURCED FROM GOOGLE MAPS. MAP IS FOR REPRESENTATIONAL PURPOSES ONLY. ACTUAL DISTANCE & TRAVEL TIME MAY VARY AS PER DRIVING CONDITIONS. 1 MIN = 60 SECONDS

# 3.5 & 4.5 BHK LARGE DECK HOMES

POWERED BY SCHNEIDER

- IMPORTED MARBLE ENTRANCE LOBBY
- LUXURY SPECIFICATION KITCHEN WITH WHITE GOODS
- IMPORTED MARBLE IN LIVING ROOM
- METICULOUSLY DESIGNED SPACES AND INTERIORS
- HIGHLY EFFICIENT HOMES
- HOMES OPENING TO CENTRAL RESORT GREENS
- 0.5 EXTRA SPACE



ONE-OF-A-KIND  
*resort style living*

THAT ELEVATES YOUR LIFESTYLE  
BEYOND IMAGINATION

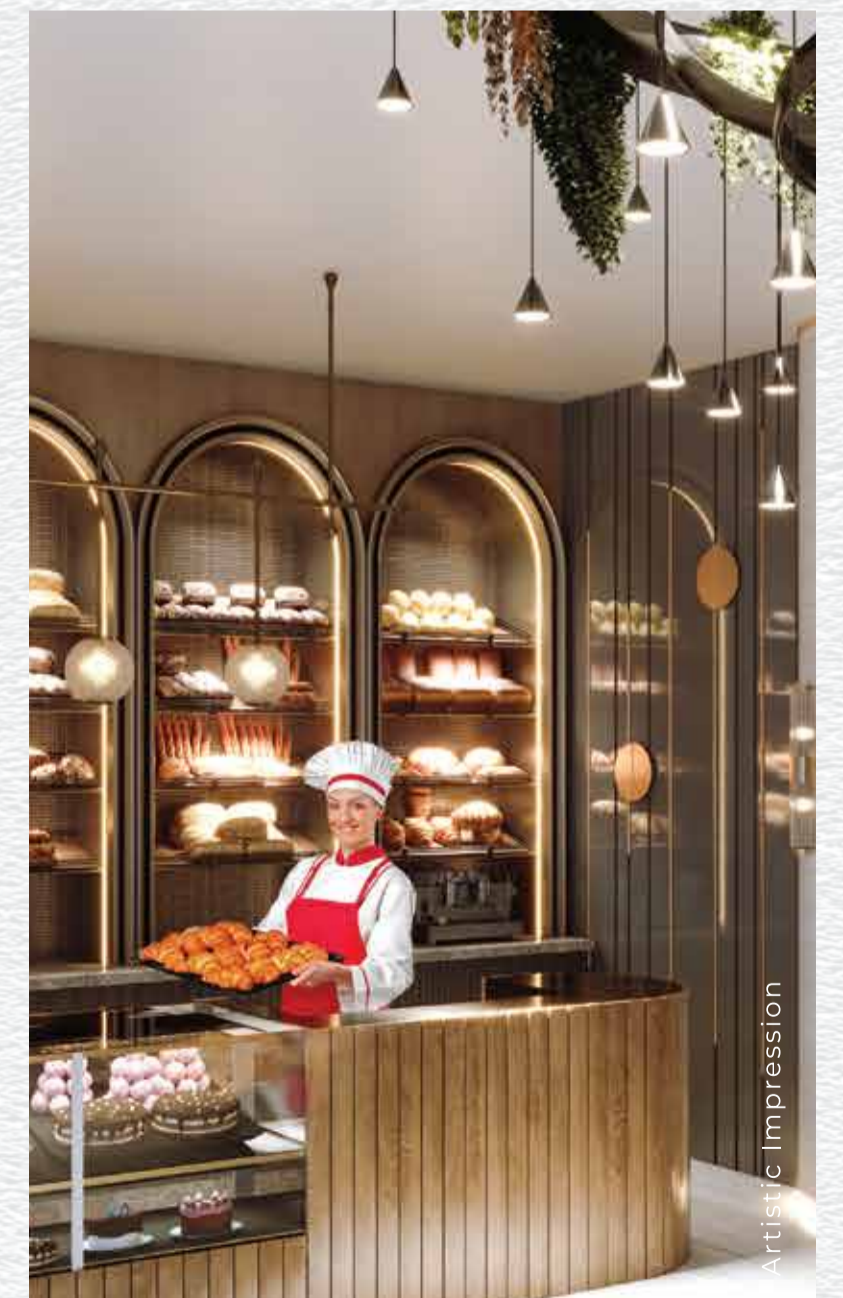


- TRANQUIL BLUE LAGOONS
- SUNKEN POOL BAR
- AMPHITHEATRE
- STATE-OF-THE-ART FITNESS CENTRE  
AND OUTDOOR GYM

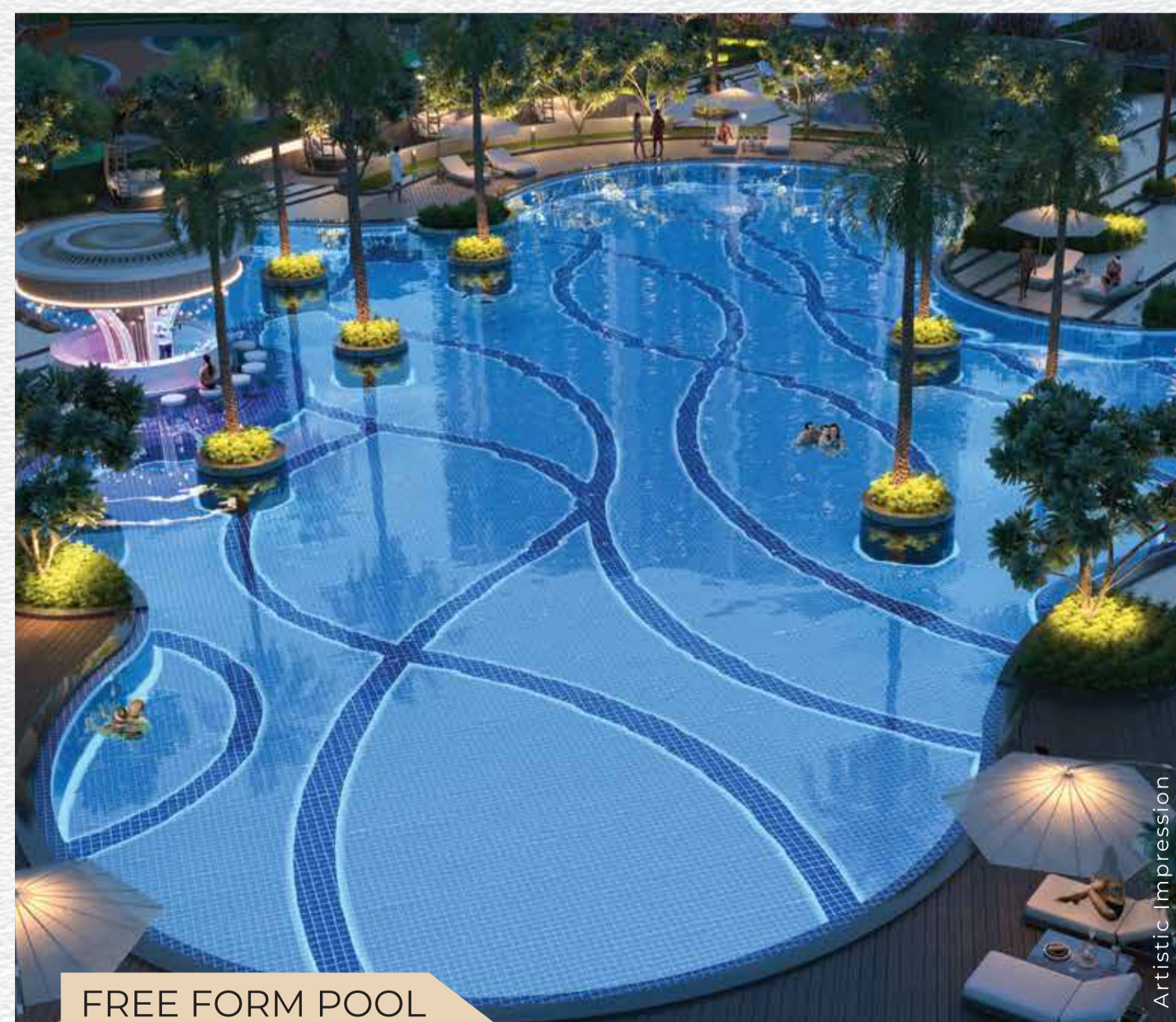
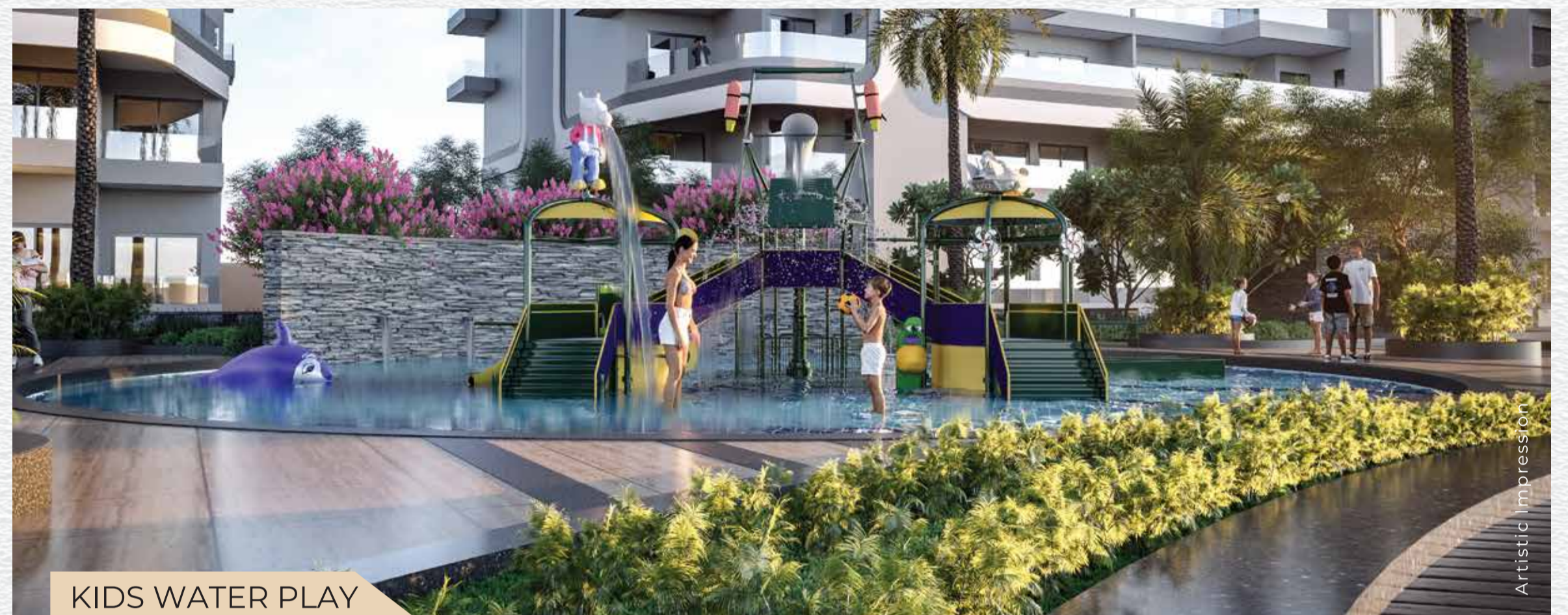


# GO CLUBBING THE ONE DXP WAY

AN UNPARALLELED HOLISTIC LIVING EXPERIENCE THAT  
CATERS TO THE RECREATIONAL NEEDS OF EVERY AGE  
GROUP. ENJOY SOCIALIZING, COMMUNITY BUILDING,  
CLUBBING, REJUVENATING, PLAYING SPORTS - ALL AT  
THE FIRST ADDRESS!



# LUXURIOUS *resort style amenities*





## 3.5 BHK + UTILITY - DECK APARTMENT

APT CODE - A 2450



## 3.5 BHK + UTILITY - XL DECK APARTMENT

APT CODE - A 2503

**Note:** This does not constitute a legal offer. All areas and dimensions are tentative and subject to change till the final completion of the project as permissible under applicable laws. This brochure contains artistic impressions, and no warranty is expressly or impliedly given that the completed development of the project will comply in any degree with such artist's impression as depicted. All layouts, plans, specifications, dimensions, designs, measurements, and locations are indicative, not to scale and are subject to change as may be decided by the developer or the competent authority. For further details, please refer the agreement for sale. Soft furnishings, cupboards, furniture, and gadgets, etc. are not part of the offering and are only indicative in nature and are only for the purpose of illustrating/indicating a conceived layout and do not form part of the standard specification/amenities/services to be provided. The above-mentioned sizes are for a typical floor plan, floor sizes may vary. 1 sq mtr = 10.764 sq ft., 1 foot = 0.3048 mtr



## 3.5 BHK + UTILITY - XXL DECK APARTMENT

**APT CODE - A 2585**

**Note:** This does not constitute a legal offer. All areas and dimensions are tentative and subject to change till the final completion of the project as permissible under applicable laws. This brochure contains artistic impressions, and no warranty is expressly or impliedly given that the completed development of the project will comply in any degree with such artist's impression as depicted. All layouts, plans, specifications, dimensions, designs, measurements, and locations are indicative, not to scale and are subject to change as may be decided by the developer or the competent authority. For further details, please refer the agreement for sale. Soft furnishings, cupboards, furniture, and gadgets, etc. are not part of the offering and are only indicative in nature and are only for the purpose of illustrating/indicating a conceived layout and do not form part of the standard specification/amenities/services to be provided. The above-mentioned sizes are for a typical floor plan, floor sizes may vary. 1 sq mtr = 10.764 sq ft. 1 foot = 0.3048 mtr



## 4.5 BHK + UTILITY - DECK APARTMENT

APT CODE - A 3055



## 4.5 BHK + UTILITY - XL DECK APARTMENT

APT CODE - A 3150

**Note:** This does not constitute a legal offer. All areas and dimensions are tentative and subject to change till the final completion of the project as permissible under applicable laws. This brochure contains artistic impressions, and no warranty is expressly or impliedly given that the completed development of the project will comply in any degree with such artist's impression as depicted. All layouts, plans, specifications, dimensions, designs, measurements, and locations are indicative, not to scale and are subject to change as may be decided by the developer or the competent authority. For further details, please refer the agreement for sale. Soft furnishings, cupboards, furniture, and gadgets, etc. are not part of the offering and are only indicative in nature and are only for the purpose of illustrating/indicating a conceived layout and do not form part of the standard specification/amenities/services to be provided. The above-mentioned sizes are for a typical floor plan, floor sizes may vary. 1 sq mtr = 10.764 sq ft. 1 foot = 0.3048 mtr



## 4.5 BHK + UTILITY - XXL DECK APARTMENT

APT CODE - A 3203

**Note:** This does not constitute a legal offer. All areas and dimensions are tentative and subject to change till the final completion of the project as permissible under applicable laws. This brochure contains artistic impressions, and no warranty is expressly or impliedly given that the completed development of the project will comply in any degree with such artist's impression as depicted. All layouts, plans, specifications, dimensions, designs, measurements, and locations are indicative, not to scale and are subject to change as may be decided by the developer or the competent authority. For further details, please refer the agreement for sale. Soft furnishings, cupboards, furniture, and gadgets, etc. are not part of the offering and are only indicative in nature and are only for the purpose of illustrating/indicating a conceived layout and do not form part of the standard specification/amenities/services to be provided. The above-mentioned sizes are for a typical floor plan, floor sizes may vary. 1 sq mtr = 10.764 sq ft., 1 foot = 0.3048 mtr



## THE FUTURE OF REAL ESTATE

SMARTWORLD ENVISAGES TRANSFORMING THE REAL ESTATE SCENARIO THROUGH ITS VISION OF BUILDING WORLD-CLASS REAL ESTATE ASSETS IN INDIA. IT ASPIRES TO SET NEW BENCHMARKS IN CONSTRUCTION, OPERATIONS, CUSTOMER SERVICES AND UNMATCHED DELIVERY SCHEDULES BY UTILISING INNOVATIVE AND SMART TECHNOLOGIES.

## OUR ONGOING PROJECTS

<b>SMART WORLD GEMS</b> Sector 89, New Gurugram RC/REP/HARERA/GGM/502/234/2021/70	<b>SMART WORLD ORCHARD</b> Sector 61, Golf Course Road (E), Gurugram RC/REP/HARERA/GGM/617/349/2022/92	<b>SMART WORLD ORCHARD STREET</b> Sector 61, Golf Course Road (E), Gurugram RC/REP/HARERA/GGM/773/505/2023/117	<b>SMART WORLD ONE DXP STREET</b> Smart City Delhi Airport Sector 113 Gurugram RC/REP/HARERA/GGM/652/384/2022/127	<b>SMART WORLD THE EDITION</b> Sector 66, Gurugram RC/REP/HARERA/GGM/756/488/2023/100
---	---	---	--	---

## NOURISH DEVELOPERS PRIVATE LIMITED

**Regd. Address:** 12A Floor, Tower-2, M3M International Financial Center, Sec-66, Gurugram

**Project Address:** Smartworld ONE DXP, Dwarka Expressway, Sec-113, Gurugram

**Sales Gallery Address:** Smartworld Gallery DXP, Dwarka Expressway, Gurugram

**CIN:** U70109HR2020PTC091616

**Website:** smartworlddevelopers.com | **Email:** care@smartworlddevelopers.com

Disclaimer: The images/maps shown in the brochure are artistic impressions / stock images. These are only for representational purposes, and are indicative in nature. The final specifications of the project shall be as per the agreement executed between the parties. Use of sports and community facilities shall be subject to payment of charges and other terms and conditions. Not a site photograph. Only an artistic impression. 0.5 bedroom space refers to space for study. The RERA official website is <https://haryanarera.gov.in/>. Project **RERA Registration No. PHASE 1 - RC/REP/HARERA/GGM/645/377/2022/120 DATED 13.12.2022**  
**PHASE 2 - RC/REP/HARERA/GGM/842/574/2024/69 | DATE: 24.06.2024 , License no. 106 of 2022-dated 05.08.2022.**