

DISCOVER A GREEN PARADISE TO BUILD YOUR DREAM HOME



Hero  **earth** | **The Ark**
Sector 85, Gurugram



Message from our Chairman



As a principle, we have three criteria in mind before engaging in a new venture. First, the venture needs to be something that one of us in senior management is passionate about. Second, it has to be in an area where we can make the maximum positive social impact. Finally, it has to be a venture where we can move into a leadership position. Housing in India is both, a serious social challenge, and a great economic opportunity. While the country's population has grown exponentially, most do not have the privilege of a well-appointed home. At the same time, when housing is promoted, great multipliers are created, since an estimated 150 plus industries are linked to this sector in some form or the other. This socio-economic impact has strengthened our conviction to commit ourselves to the business of building homes and community development. The Hero Earth venture is a manifestation of this conviction.

Sunil Kant Munjal, Chairman, Hero Enterprise

Imagine a space
where you can reconnect
with nature.





Introducing

Hero  **earth**

Inspired by the planet,
for the planet.

Can we reimagine the present? Can we get away from the hustle and bustle of daily lives? Can we reconnect with nature and live in homes that nurture us? Can we enjoy a lifestyle that doesn't compromise our tomorrow? Hero Earth is our way of showing the world we can. Creating a living experience inspired by the planet. Hero Earth is the first plotted development offering from the house of Hero Realty Pvt. Ltd. Through meticulously designed plotted development opportunities, Hero Earth seeks to provide a harmonious blend of modern living and environmental consciousness. The carefully planned spaces not only cater to the immediate needs and desires of their inhabitants but also prioritizes the well-being of the planet we call home.

A space for your home
inspired by our home
in the universe.



A space that
reinvents plotted
living like never before.



Launching
Heroearth | **The Ark**
Sector 85, Gurugram

A dream destination to build your dream home.

The idea of a township that is built keeping in mind a better, cleaner and greener future is a great premise especially when we are already seeing the results of pollution, waste accumulation and resource imbalance. The Ark is a symbolic reference for a place built for tomorrow, a place that will nurture the present without harming the future.





Your own piece of earth,
where you can indulge
and create lasting memories.

A living experience designed today for a better tomorrow.

The Ark, is a residential plotted development located on a sprawling 5-acre land, offering a collection of 76 plots. Nestled within this serene environment, it offers an ideal setting to build your dream home and enjoy the peaceful and comfortable lifestyle you seek.



A space where you can reconnect with nature.

Hero Earth's first plotted development - The Ark takes inspiration from nature, where trees become an integral part of the project's concept. The streets within the development are named after various trees of international topiary, and these same trees are planted along the streets, creating a harmonious and green environment.





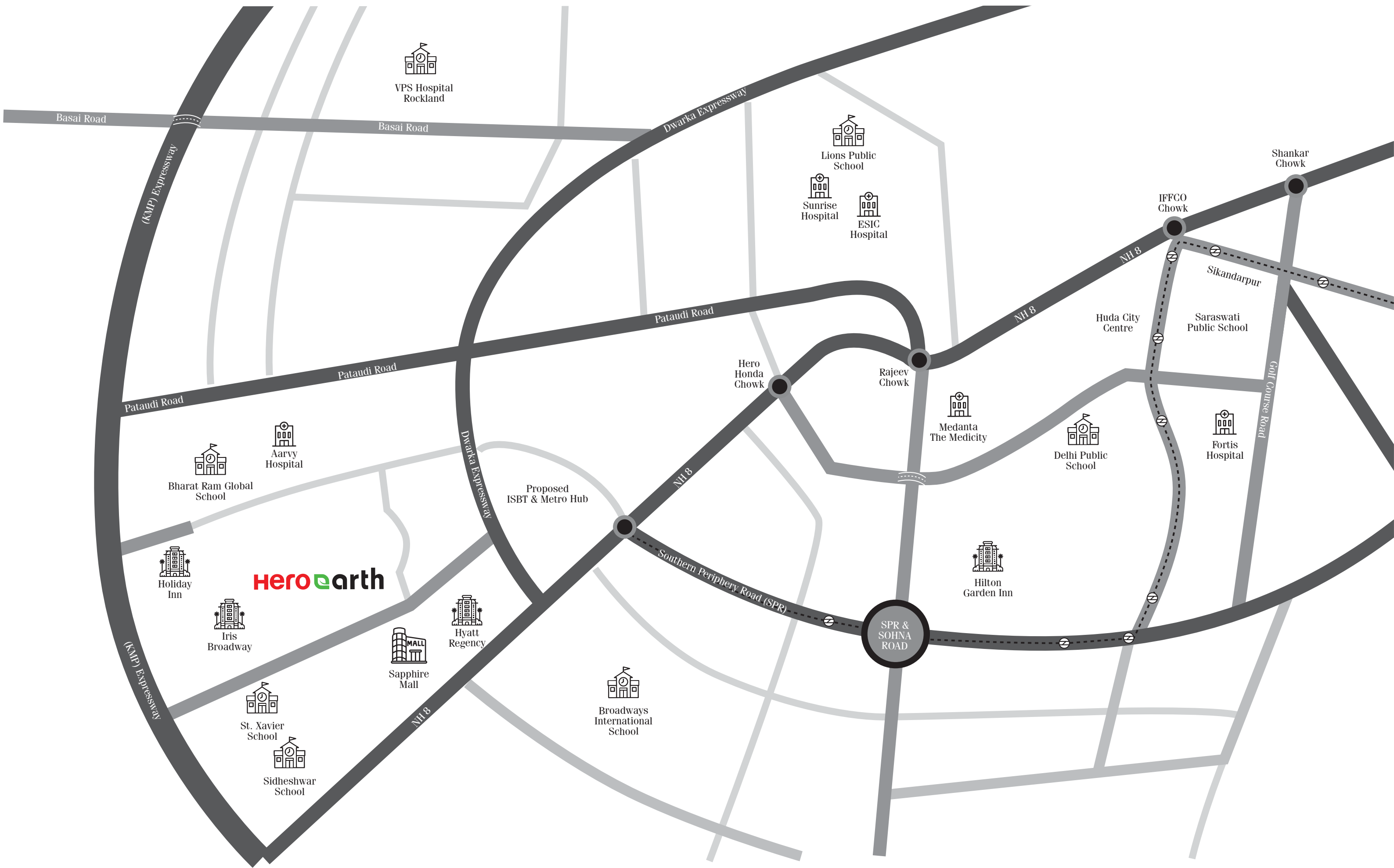
In the heart of the city, with nature at its heart.

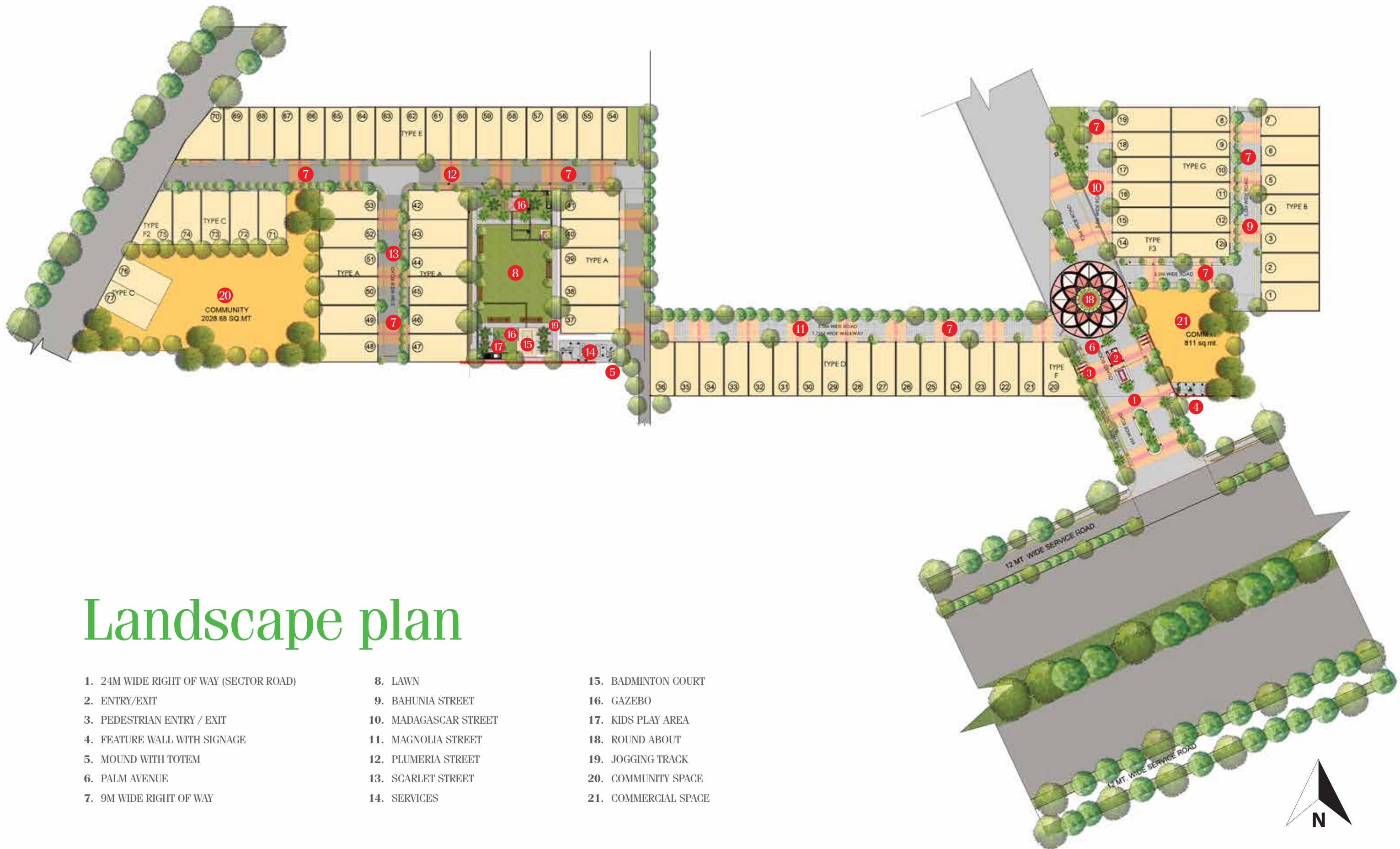
Strategically located at a prime location that is near to both NH-48 and Dwarka Expressway with entry from main sector road. The proximity of the location provides seamless access to prominent retail and corporate centres in Gurugram and is closely located near the prominent manufacturing hub of Manesar.

Redefine the art of plotted
living in a space
that exceeds imagination.



Closer to everything and nature.





Landscape plan

- | | | |
|--|-----------------------|----------------------|
| 1. 24M WIDE RIGHT OF WAY (SECTOR ROAD) | 8. LAWN | 15. BADMINTON COURT |
| 2. ENTRY/EXIT | 9. BAHUNIA STREET | 16. GAZEBO |
| 3. PEDESTRIAN ENTRY / EXIT | 10. MADAGASCAR STREET | 17. KIDS PLAY AREA |
| 4. FEATURE WALL WITH SIGNAGE | 11. MAGNOLIA STREET | 18. ROUND ABOUT |
| 5. MOUND WITH TOTEM | 12. PLUMERIA STREET | 19. JOGGING TRACK |
| 6. PALM AVENUE | 13. SCARLET STREET | 20. COMMUNITY SPACE |
| 7. 9M WIDE RIGHT OF WAY | 14. SERVICES | 21. COMMERCIAL SPACE |

Secure a legacy for future generations
with a destination built to stand the test of time.



Spaces that rejuvenate you.



Relax in the Company of Peace and Tranquility.
Landscaped Entrance with Water Bodies.



Let your Children Discover their Own Worlds.
Toddlers Zone.



Indulge in an Active Lifestyle.
Badminton Court.



Let your Feet have Conversation with Grass.
Lush Green Lawn Area,
Gazebo Seating.



Build a Social Network in the Real World.
Community Space.



A Canopy of Green for your Long Walks.
International Topiary of Trees,



Embrace an Energetic and Vibrant Lifestyle.
Jogging Track



Bask in the Serenity of Tranquillity.
Gazebo Seating



Experience the Lush Greenery During your Leisurely Strolls
Landscaped roads with tree lines

Features

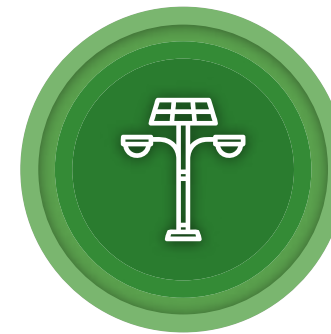
With a range of cutting-edge features and sustainable initiatives, The Ark is setting a new standard in modern living. It is more than just a residential space; it is a thoughtfully planned community with features like:



24x7
Security



Wide
Internal Roads



Well lit
streets



Pedestrian
Walkways



Secure Gated
Complex



EV Charging



Rain Water
Harvesting



Sewage
Treatment

Your own piece of earth
where you can
nurture your future.





Hero Earth is a venture of Hero Realty Pvt. Ltd. - A Hero Enterprise



Site Office: Sector 85, Gurugram | **Registered & Corporate Office:** 264, Okhla Industrial Estate, Phase 3, New Delhi - 110020
www.herohomes.in

Disclaimer: Amenities and layout plans are subjects to change without prior notice. The contents of this brochure are purely conceptual and do not represent in any manner a legal offering or promise. The plans shown in this brochure are schematic. The company reserves the right to changes/modify the layout/offering/specifications at it's sole discretion. **HARERA No. RC/REP/HARERA/GGM/726/458/2023/70 of 2023, dated 07/06/2023, website www.haryanarera.gov.in.**