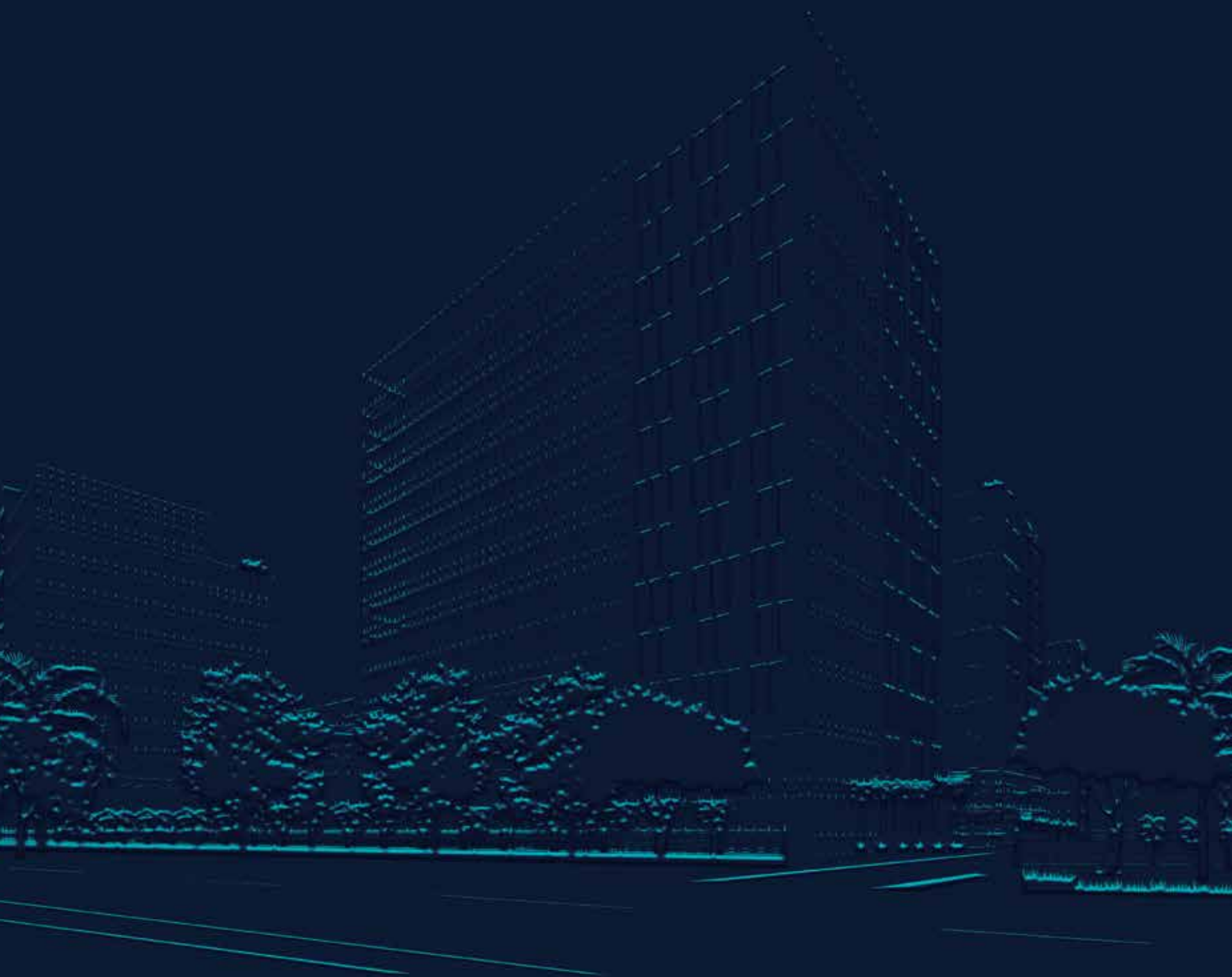


INSPIRE[®]
— BUSINESS PARK —
AHMEDABAD

Not just workspaces, these are lifespaces.





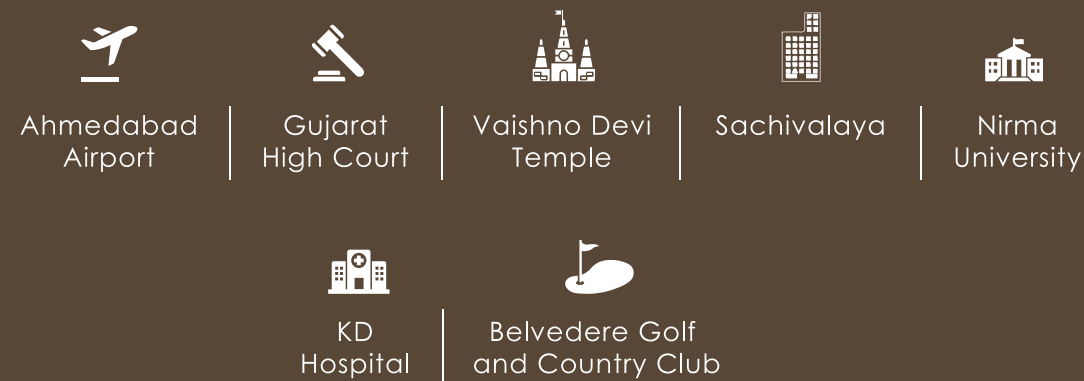
- ~ An impeccable blend of business and leisure.
- ~ A place that empowers your thinking and transforms your business.
- ~ A space where innovative ideas flourish amidst lush green environs.
- ~ A business address that lets you enjoy the goodness of work and life.

Ahmedabad. The epicenter of Gujarat's business growth.

Ahmedabad is one of the most favourable cities for businesses across sectors.

- Well-connected to other major Indian cities by air, road and rail
- Locational advantage of being on the Delhi-Mumbai corridor
 - Ongoing six-laning of Sarkhej-Gandhinagar Highway
 - Upcoming Metro Rail Project
- Well-developed tertiary sector for banking, trade and commerce
 - Access to low-cost quality talent

Landmarks in the vicinity



SoBo Center
Bopal
21 kms





GOODNESS

MEETS
BIGNESS



INSPIRE[®]
— BUSINESS PARK —
AHMEDABAD



Shantigram
THE GOOD LIFE



S. G. HIGHWAY

ADANI CORPORATE HOUSE

ADANI INSTITUTE OF INFRASTRUCTURE MANAGEMENT

ADANI REAL ESTATE OFFICE

THE MEADOWS

SHOPPERS' PLAZA

WATER LILY

MUSICAL AQUA SHOW

LA MARINA

JAIN TEMPLE

THE BELVEDERE GOLF & COUNTRY CLUB

GOLF COURSE

THE NORTH PARK

NARMADA CANAL

AANGAN

ELYSIUM

Disclaimer : All data and information provided herein (including but not limited to the layout, design, etc.) is provided on indicative basis and the same may be subject to change or withdrawal without notice. All data and information provided herein are solely intended to provide general information and any information of special interest should be obtained through independent verification.

Artistic Impression Only

NOT TO SCALE



Presenting

INSPIRE BUSINESS PARK

Adani Realty's largest commercial office venture in Gujarat

Inspire Business Park — located amidst the Integrated Township of Shantigram, is an address designed to give businesses the right environment to flourish. It is a culmination of thorough understanding of workspace science and the desire to include lifestyle amenities. All for a perfect work-life balance.

CREST

Make your business
ride the wave of success

Distinctive and independent Corporate Buildings designed for companies that seek cohesive and integrated workspaces set in a contemporary environment that encourages collaboration, productivity and innovation.





CROWN

Give your business
the perks it deserves

Commercial Towers designed to celebrate
diversity of purpose and scale where
retail-activated ground plane provides a
buzzing premise to signature boutique offices.

Retail Spaces at CROWN

A preferred destination for popular brands looking to reap the rewards of high visibility and quality footfalls with their presence amidst contemporary office spaces.





Signature Boutique Offices at CROWN

An array of office space that exudes the right aura and attitude; and comes loaded with amenities and facilities befit for ambitious businesses.



Images for representation purpose only

Serenity amidst all the action

Workspaces in the future are bound to get greener. At Inspire Business Park, we are ready for the future. The green amenities offer unlimited tranquility and provide a refreshing reprieve from work pressure.

- Landscaped Central Courtyard
- Selective units with Private Terraces
- Part of largest IGBC Gold pre-certified township in Western India

Proposed amenities* at Inspire Business Park

Food & Beverage

Enthral your taste buds.



Day Care Centre

Perfect care for the little ones.



Salon

Find more ways to look good.



24x7 High-tech Security

Keep your business safe.



Gym & Health Club

Work out at the well-equipped gymnasium.



Parking Space

Secure space for your wheels.



*Proposed amenities are subject to availability of service providers.

Images for representation purpose only



Access to Belvedere Golf and Country Club is for members only.

Actual Photograph



Actual Photograph



Image for representation purpose only



Actual Photograph



Actual Photograph



Exquisite indulgences. Crafted for a privileged few.

The Belvedere Golf and Country Club is a tastefully designed and meticulously executed lifestyle club with the finest indulgences and top-class sporting facilities. It's a place where you can relax and savour the finer things in life.

- Award-winning 9 hole par 36 golf course with Gujarat's largest golf academy
- World-class indoor and outdoor sports arena
- 55 ultra-luxurious rooms with 3 family suites
- Thematic restaurants and cafes
- Entertainment wings with unmatched amenities

Standing tall across India

Adani Realty is the real-estate arm of India's leading infrastructure and development entity — Adani Group. With its commitment to 'Nation Building' and 'Growth with Goodness', Adani Realty is developing real estate projects in India's most promising destinations, integrating the finest design aesthetics with cutting-edge construction technology. The company till now has developed close to 13 lakh sq.mtrs. (saleable area) and has close to 7 lakh sq.mtrs. (saleable area) of real estate space under development which includes residential, commercial and social club projects across Ahmedabad, Mumbai, Pune & Gurugram.

MUMBAI



GURUGRAM

SAMSARA
— VILASA —



OYSTER GRANDÉ

AHMEDABAD

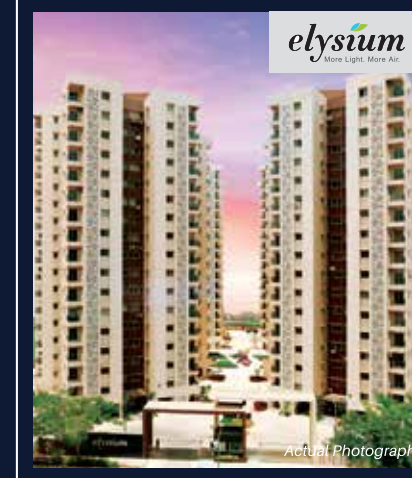
LA MARINA



The North Park
Luxurious Villa Community



elysium
More Life. More Art.



Shantigram
THE GOOD LIFE



WATER LILY



THE MEADOWS

RERA Numbers

AHMEDABAD	
Inspire Business Park	PR/GJ/GANDHINAGAR/GANDHINAGAR/AUDA/CAA05707/120719
The North Park	Phase 2 & 3: PR/GJ/AHMEDABAD/AHMEDABAD CITY/AUDA/RAA01824/010318 Phase 4 & 7: PR/GJ/AHMEDABAD/AHMEDABAD CITY/AUDA/RAA01901/070318 Phase 5: PR/GJ/AHMEDABAD/AHMEDABAD CITY/AUDA/RAA00268/270917 Phase 6: PR/GJ/AHMEDABAD/AHMEDABAD CITY/AUDA/RAA00303/290917 Phase 8: PR/GJ/GANDHINAGAR/GANDHINAGAR/AUDA/RAA06343/181119
The Meadows	Phase 1: PR/GJ/AHMEDABAD/DASKROI/AUDA/RAA01520/030218 Phase 2: PR/GJ/AHMEDABAD/DASKROI/AUDA/RAA01519/030218 Phase 3: PR/GJ/AHMEDABAD/DASKROI/AUDA/RAA00577/021117 Phase 4: PR/GJ/AHMEDABAD/DASKROI/AUDA/RAA01518/030218
Aangan	Phase 2: PR/GJ/AHMEDABAD/AHMEDABAD CITY/AUDA/RAA01876/060318 Phase 3: PR/GJ/AHMEDABAD/DASKROI/AUDA/RAA00883/041217
La Marina	Phase 1: PR/GJ/AHMEDABAD/DASKROI/AUDA/RAA00611/071117
Water Lily	Phase 2: PR/GJ/AHMEDABAD/AHMEDABAD CITY/AUDA/RAA01521/030218 Phase 3: PR/GJ/AHMEDABAD/AHMEDABAD CITY/AUDA/RAA00576/021117 Phase 4: PR/GJ/AHMEDABAD/AHMEDABAD CITY/AUDA/RAA01511/030218 Phase 5: PR/GJ/AHMEDABAD/AHMEDABAD CITY/AUDA/RAA03398/120918
Elysium	Phase 1: PR/GJ/AHMEDABAD/DASKROI/AUDA/RAA01522/EX1/311218 Phase 2: PR/GJ/AHMEDABAD/AHMEDABAD CITY/AUDA/RAA00587/EX1/110219

Above-mentioned projects also available on website: www.gujrera.gujarat.gov.in

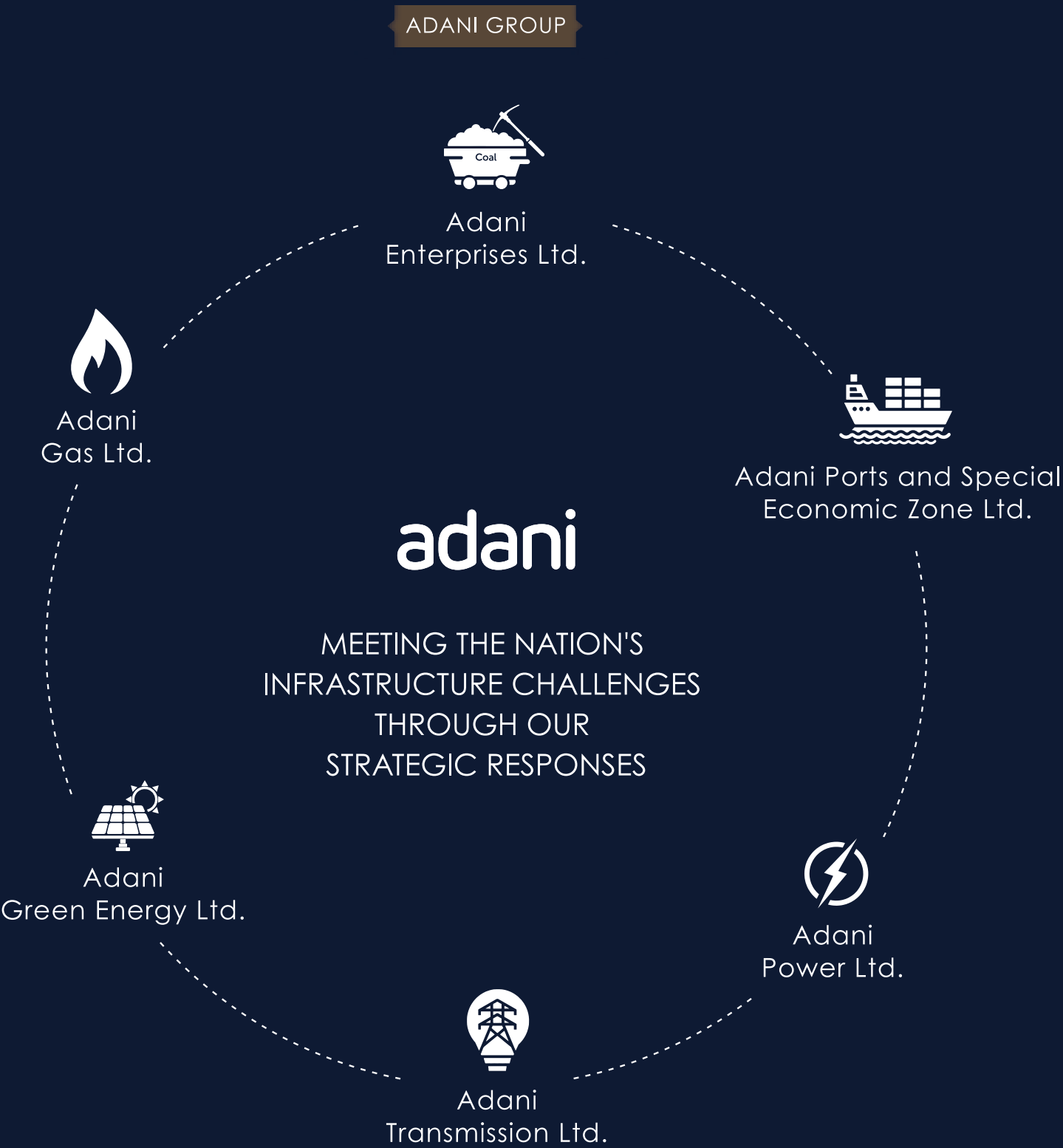
MUMBAI	
Inspire HUB	P51800002219
Inspire BKC	P51900008813 and P51900006101
Monte South	P51900001936, P51800001779, P51800001681, P51800001585, P51900001346, P51800002818
Western Heights	P51800001290

Above-mentioned projects also available on website: www.maharera.mahaonline.gov.in

GURUGRAM	
Samsara Vilasa	HRERA No. RC/13 (RC/REP/HRERA/GGM/318/50/2019/13) dated 26-03-2019
Samsara	HRERA No. 207 of 2017 dated 15/09/2017 HRERA No. 197 of 2017 dated 15/09/2017 HRERA No. 357 of 2017 dated 17/11/2017 HRERA No. 37 of 2018 dated 19/12/2018
Oyster Grande	HRERA No. 37 of 2017 dated 10/08/2017 HRERA No. 170 dated 29/08/2017 HRERA No. 171 dated 29/08/2017

Above-mentioned projects also available on website: www.haryanarera.gov.in

Diversified Portfolio
For a Dynamic Nation

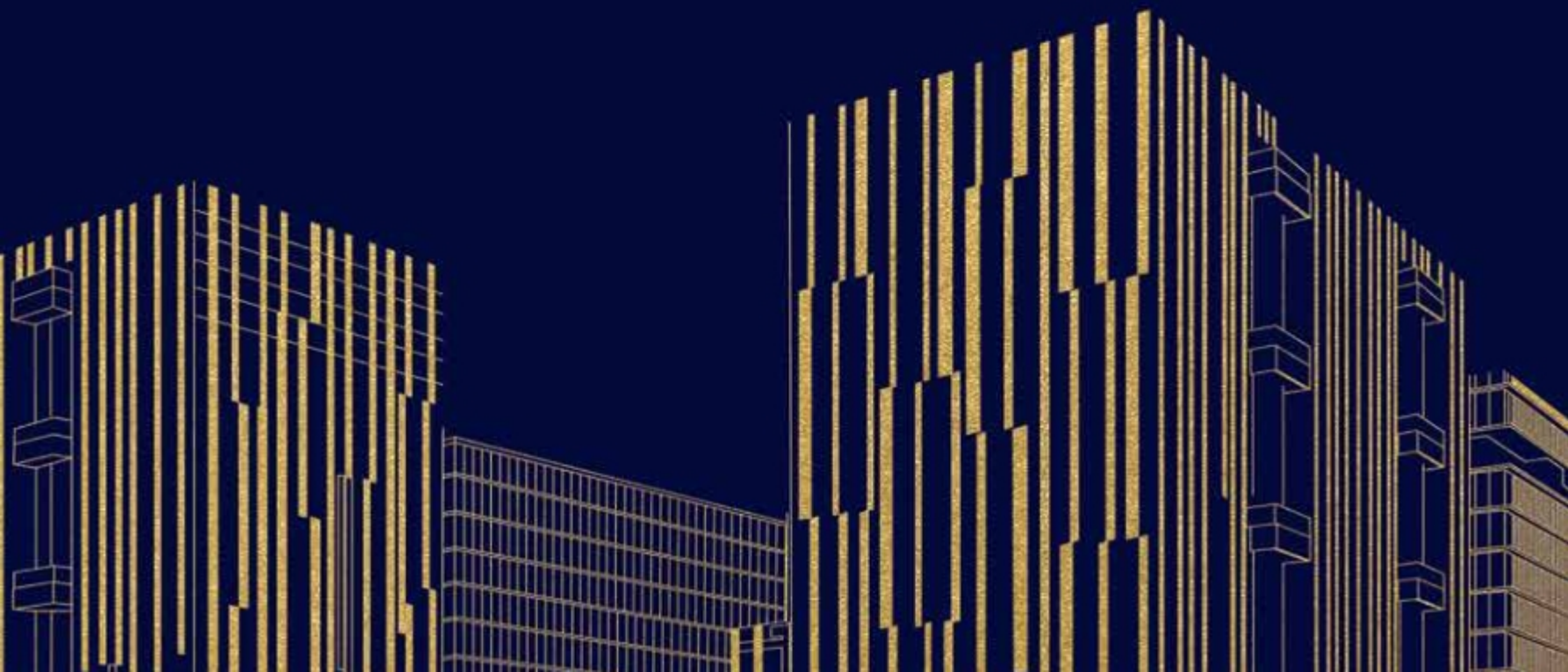




RERA NO.: PR/GJ/GANDHINAGAR/GANDHINAGAR/AUDA/CAA05707/120719 and listed on www.gujrera.gujarat.gov.in
CBD Shantigram, Near Vaishno Devi Circle, S.G. Highway, Ahmedabad - 382 421.
For enquires, call: +1800-120-2852 | website: www.inspirebusinesspark.com | E-mail: commercial@adanirealty.com

Disclaimer: This is not an advertisement within the meaning of RERA. This is not an offer, an invitation to offer and/or commitment of any nature. The images include artistic impressions for representation purpose only. This information is presented as indicative general information and no warranty is expressly or impliedly given that the completed development will comply in any degree with such artist's impression or represented images as depicted. All content relating to this project are provided solely for the purpose of information and reference. The brochure is subject to change in case of revised plan and RERA project alteration. We reserve the right to provide certain insertions of detailed layout plan pertaining to the specific unit/building/wing to the recipient. The sale is subject to terms of application form and Agreement for sale. The recipient is deemed to have been notified and agreeable to the same.

INSPIRE
—CORPORATE CAPITAL—
WORK LIFE SPACES





TOWER - A

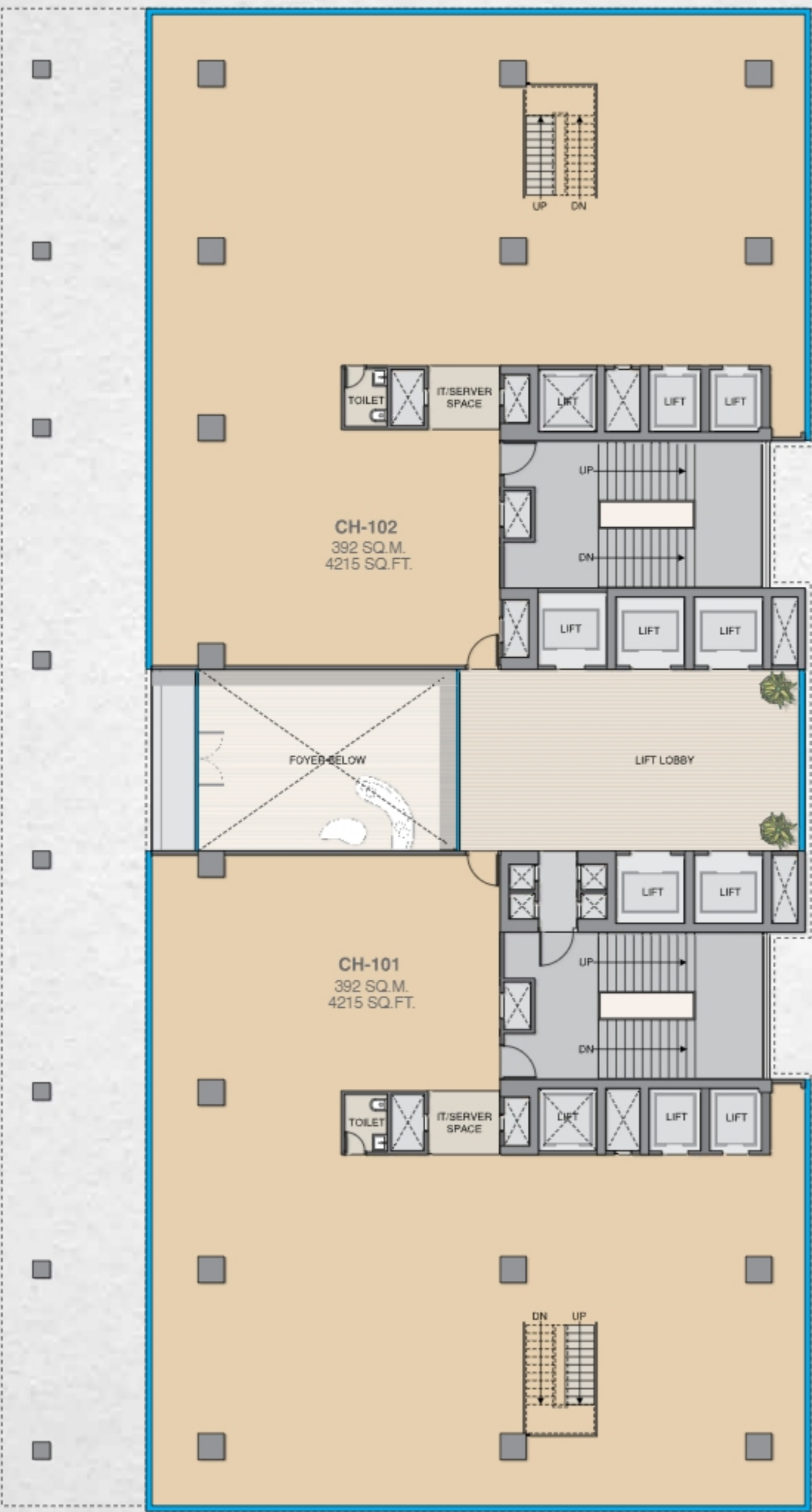


GROUND FLOOR PLAN (TOWER-A)



CORPORATE HOUSE 1 & 2
(TOWER-A)

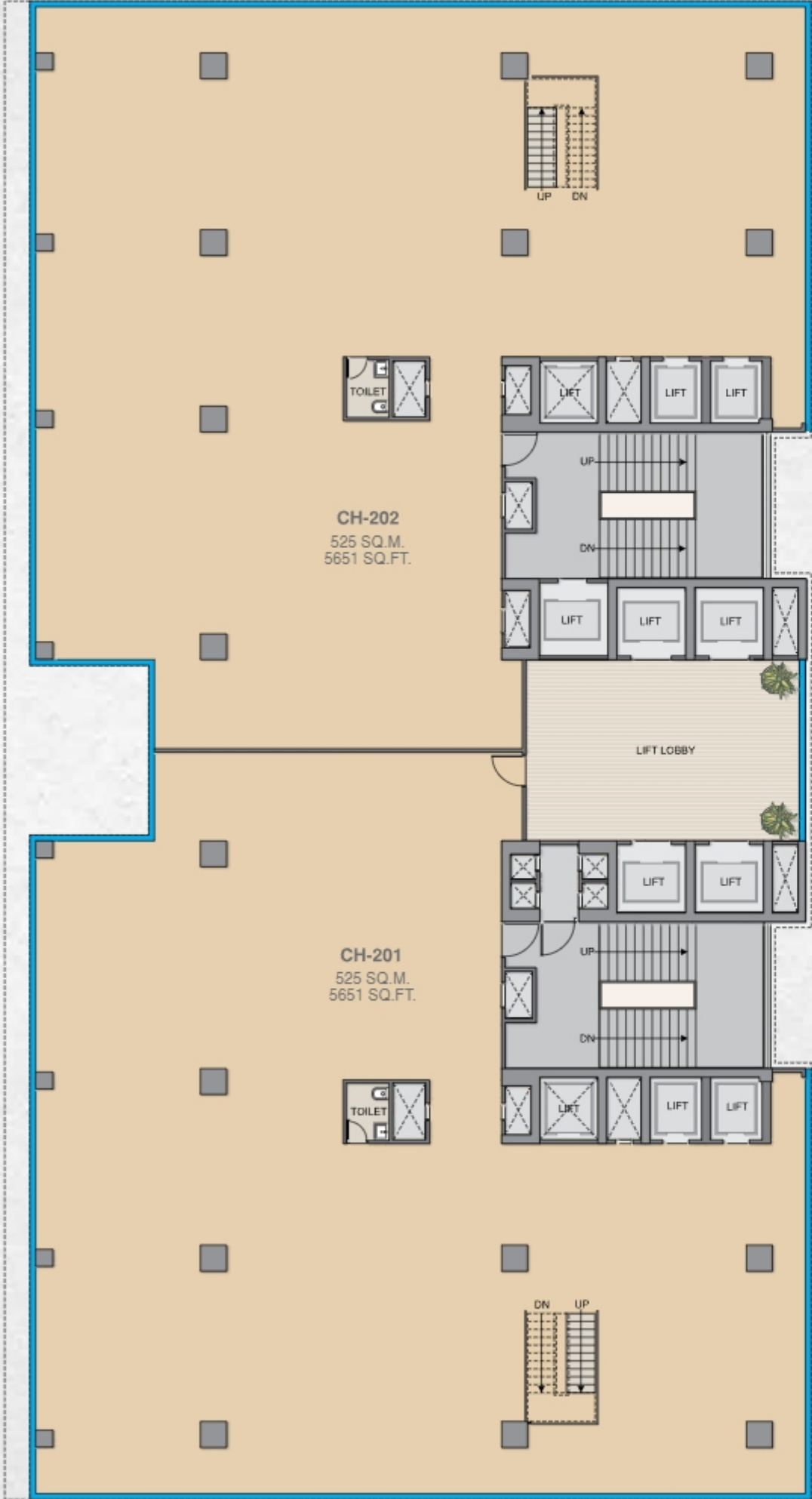
1ST FLOOR PLAN



Crèche, Cafe & Salon are Subject to Availability of the Service Provider.
Area measurements in Sq. M. and Sq. Ft. are rounded off to the nearest number, and conversion differences after a decimal being a fractional part of a number are disregarded for simplicity.

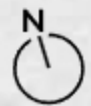
CORPORATE HOUSE 1 & 2
(TOWER-A)

2ND FLOOR
PLAN



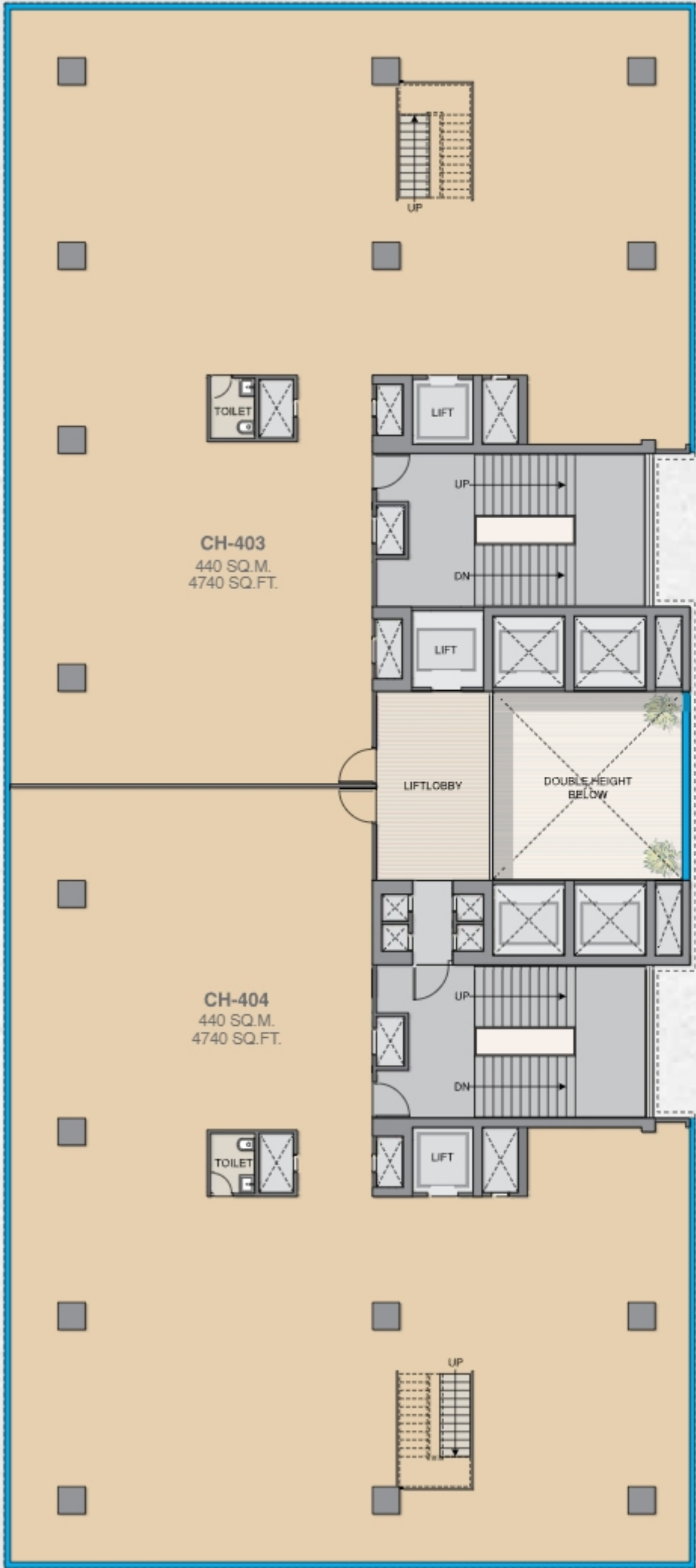
Area measurements in Sq. M. and Sq. Ft. are rounded off to the nearest number, and conversion differences after a decimal being a fractional part of a number are disregarded for simplicity.

3RD FLOOR
PLAN

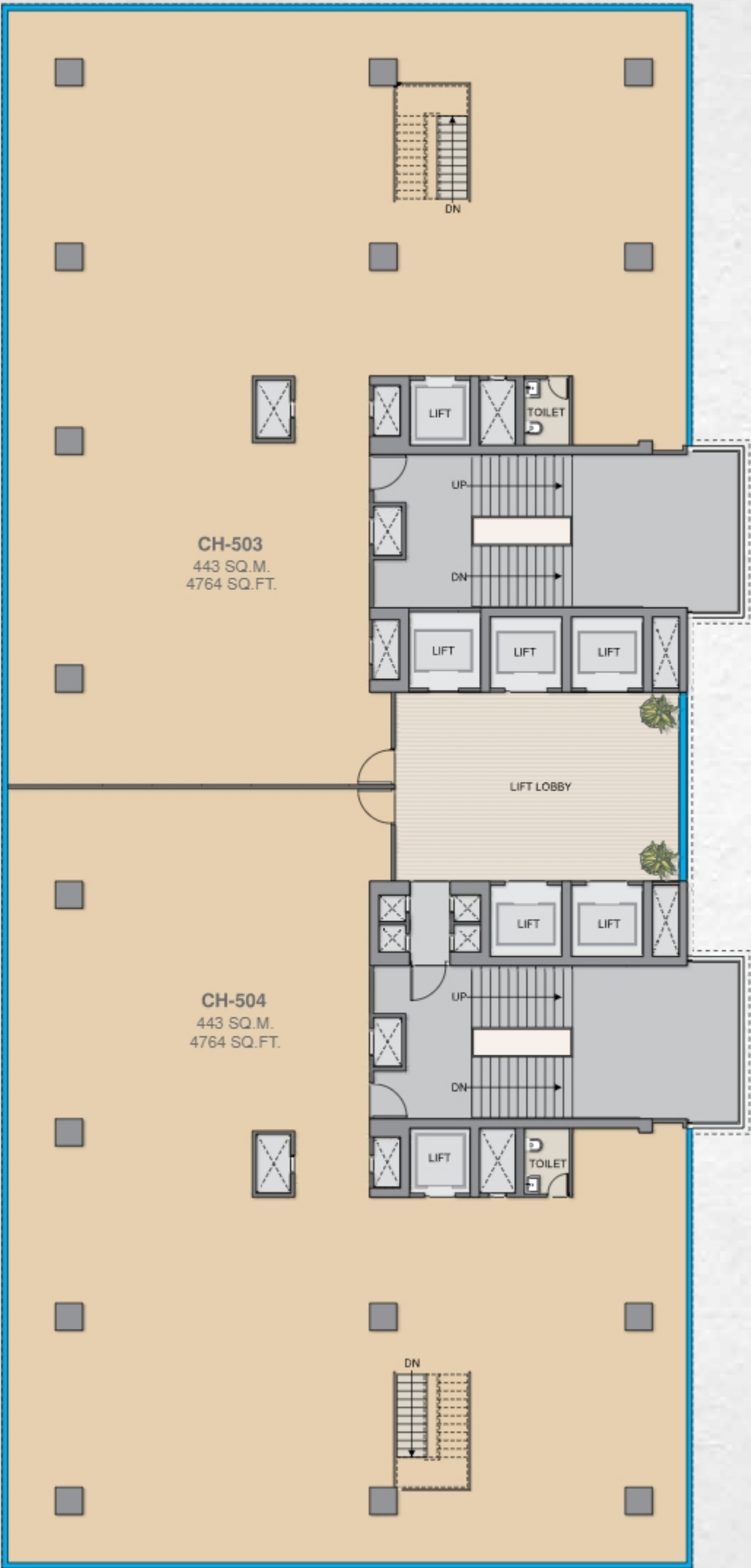


VERTICAL
CORPORATE
HOUSE 3 & 4
(TOWER-A)

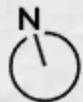
4TH FLOOR PLAN



5TH FLOOR PLAN



Area measurements in Sq. M. and Sq. Ft. are rounded off to the nearest number, and conversion differences after a decimal being a fractional part of a number are disregarded for simplicity.

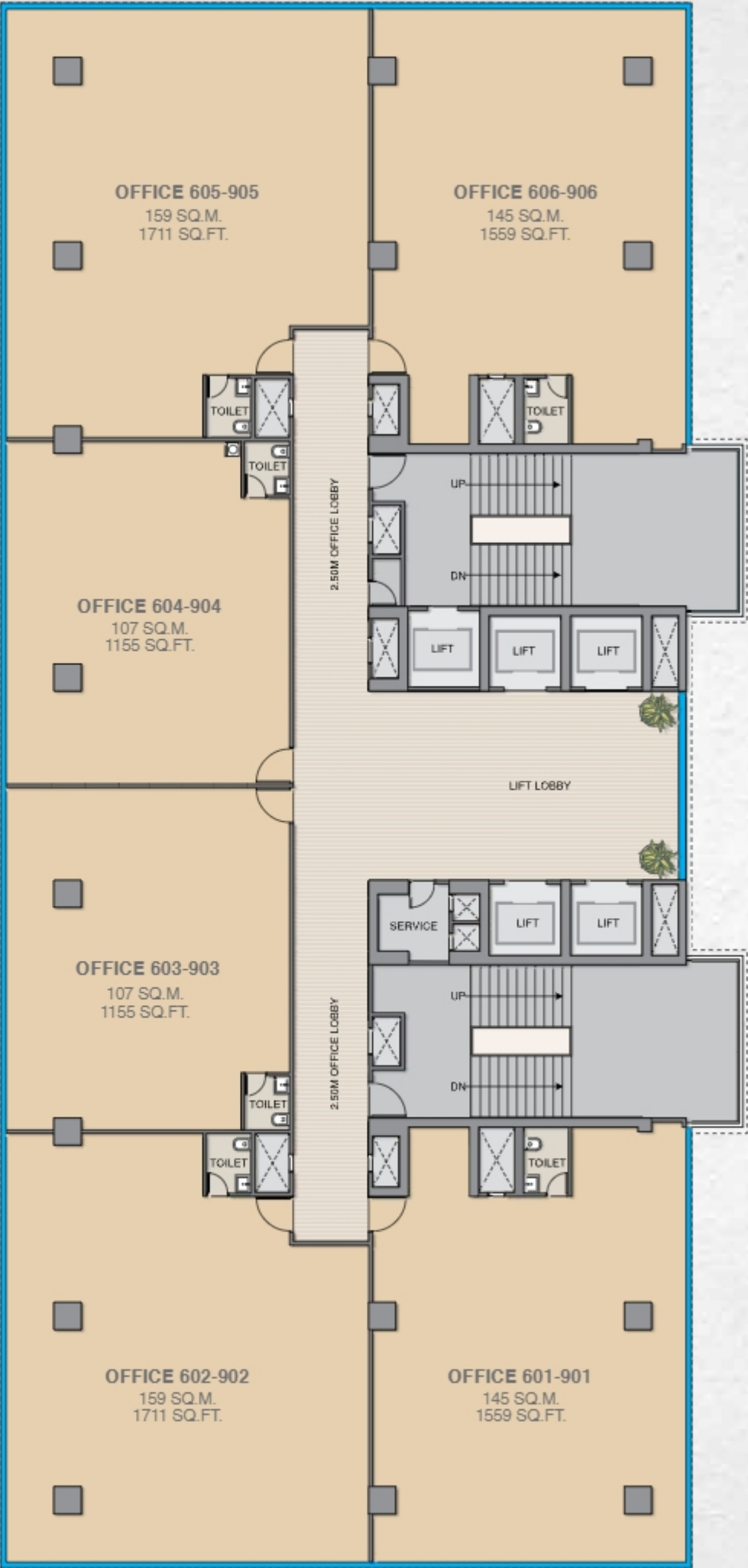


BOUTIQUE OFFICES (TOWER-A)

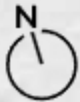


Artistic Impression

6TH TO 9TH FLOOR PLAN



Office 601 & 606 have 1.2 M. lift head within carpet area. | 8th floor has a Refuge balconies.
Area measurements in Sq. M. and Sq. Ft. are rounded off to the nearest number, and conversion differences after a decimal being a fractional part of a number are disregarded for simplicity.



FLOOR PLATE
(TOWER-A)

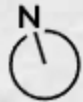
10TH FLOOR
PLAN



11TH FLOOR
PLAN



Area measurements in Sq. M. and Sq. Ft. are rounded off to the nearest number, and conversion differences after a decimal being a fractional part of a number are disregarded for simplicity.





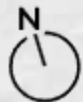
TOWER - B

TOWER-B

GROUND
FLOOR PLAN

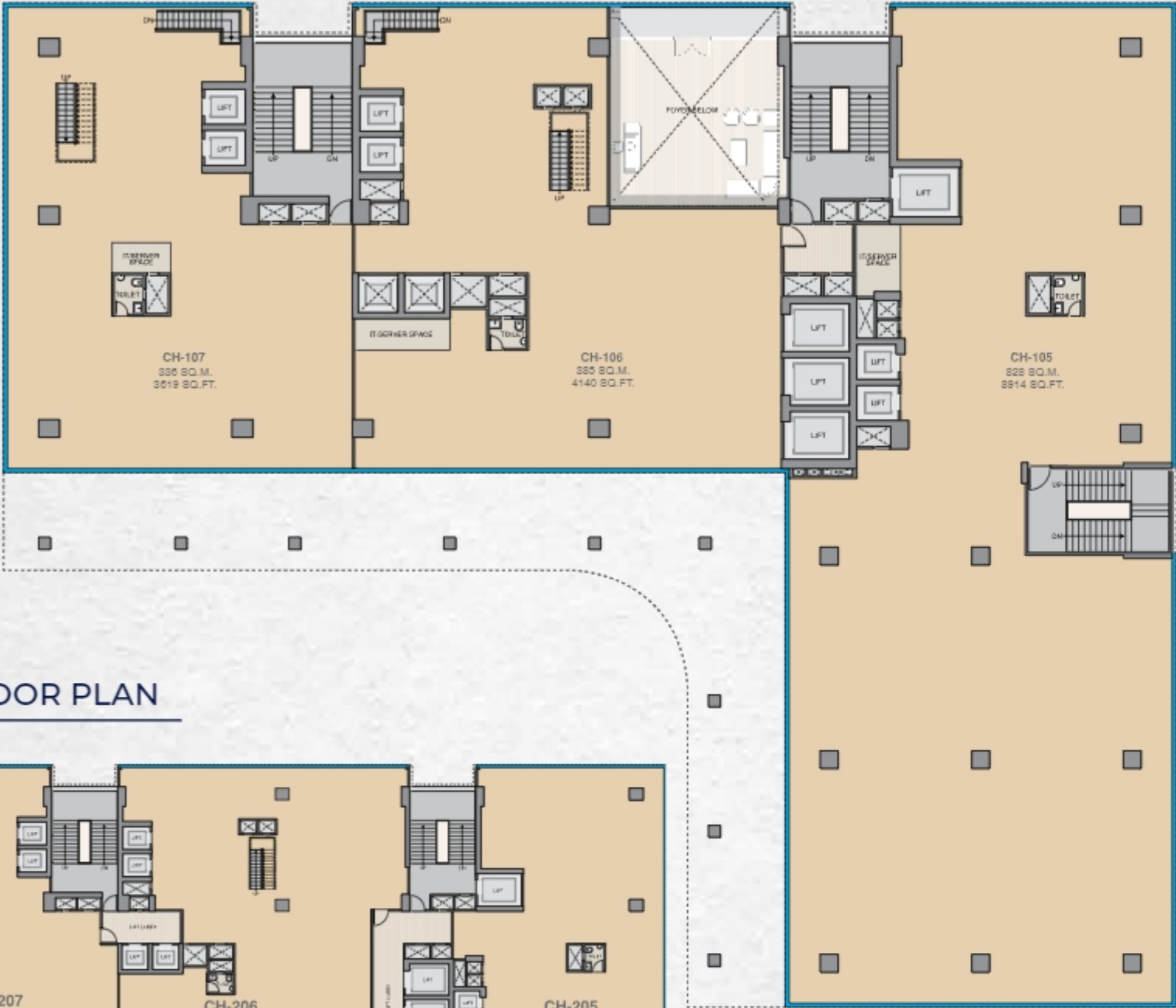


Area measurements in Sq. M. and Sq. Ft. are rounded off to the nearest number, and conversion differences after a decimal being a fractional part of a number are disregarded for simplicity.



CORPORATE HOUSE 5 TO 7 (TOWER-B)

1ST FLOOR PLAN



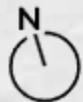
2ND FLOOR PLAN



3RD FLOOR PLAN



Area measurements in Sq. M. and Sq. Ft. are rounded off to the nearest number, and conversion differences after a decimal being a fractional part of a number are disregarded for simplicity.



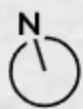
BOUTIQUE OFFICES
(TOWER-B)

4TH TO 9TH
FLOOR PLAN



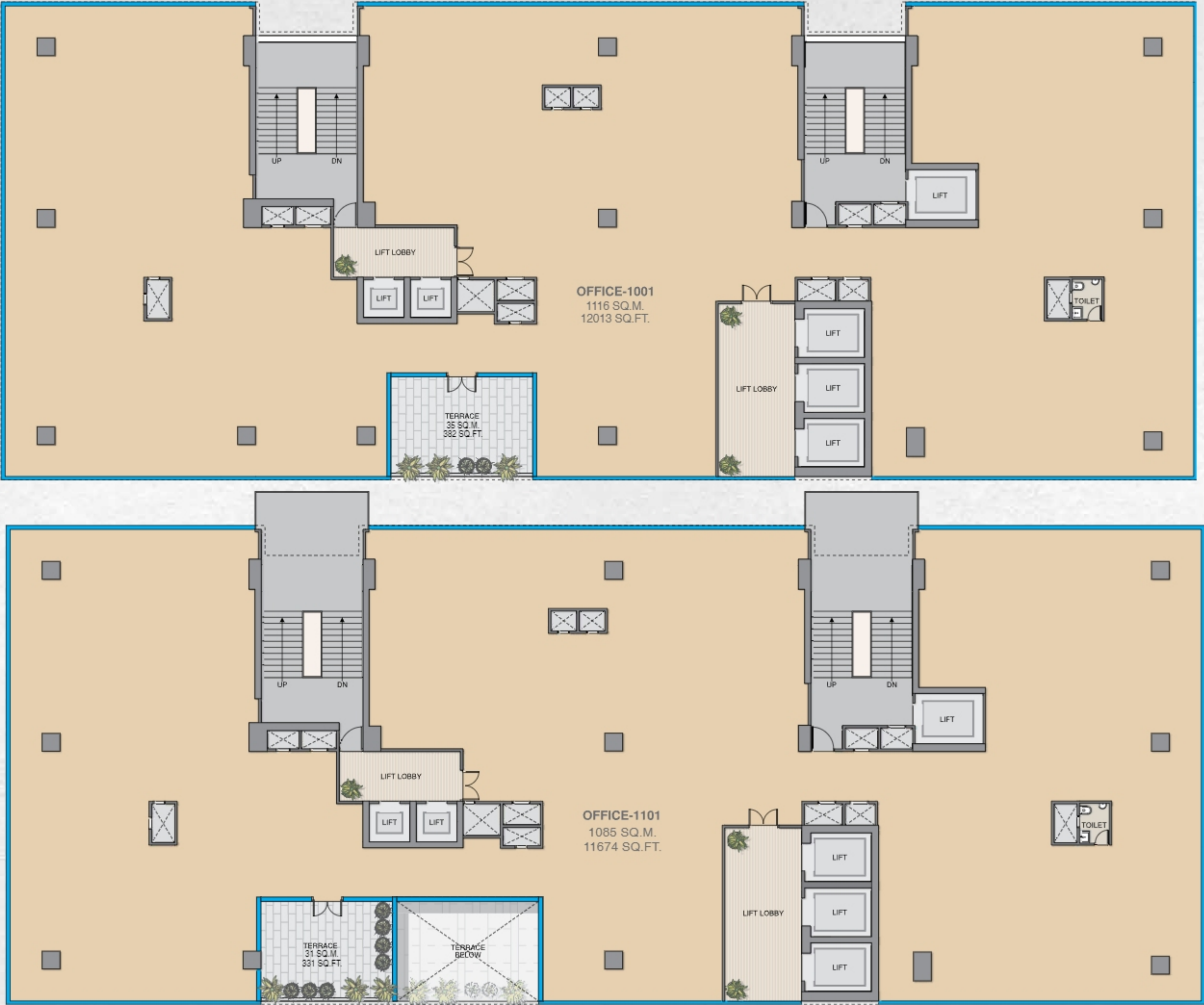
Area measurements in Sq. M. and Sq. Ft. are rounded off to the nearest number, and conversion differences after a decimal being a fractional part of a number are disregarded for simplicity.

Office Unit 408 offers an additional 81 Sq. M. (876 Sq. Ft.) of exclusive terrace space (RERA Carpet area).
5th & 8th floor have a Refuge balconies.



FLOOR PLATE
(TOWER-B)

10TH & 11TH
FLOOR PLAN



Area measurements in Sq. M. and Sq. Ft. are rounded off to the nearest number, and conversion differences after a decimal being a fractional part of a number are disregarded for simplicity.



INSPIRE

—CORPORATE CAPITAL—

~~WORK~~ LIFE SPACES

Shantigram, Near Vaishnodevi Circle,
S. G. Highway, Ahmedabad - 382 501, Gujarat.

For more details, Call: 1800 108 0009

PROJECT LISTED ON WWW.GUJRERA.GUJARAT.GOV.IN
PR/GJ/GANDHINAGAR/GANDHINAGAR/AUDA/CAA12523/251023

DISCLAIMER: This is not an advertisement within the meaning of RERA. This is not an offer, an invitation to offer and/or commitment of any nature. The images include artistic impressions and are for representation purpose only. This information is presented as indicative general information and no warranty is expressly or impliedly given that the completed development will comply in any degree with such artist's impression or represented images as depicted. All content relating to this project are provided solely for the purpose of information and reference. The brochure is subject to change in case of revised plan and RERA project alteration. We reserve the right to provide certain insertions of detailed layout plan pertaining to the specific unit/building/wing to the recipient. The sale is subject to terms of application form and Agreement.

