

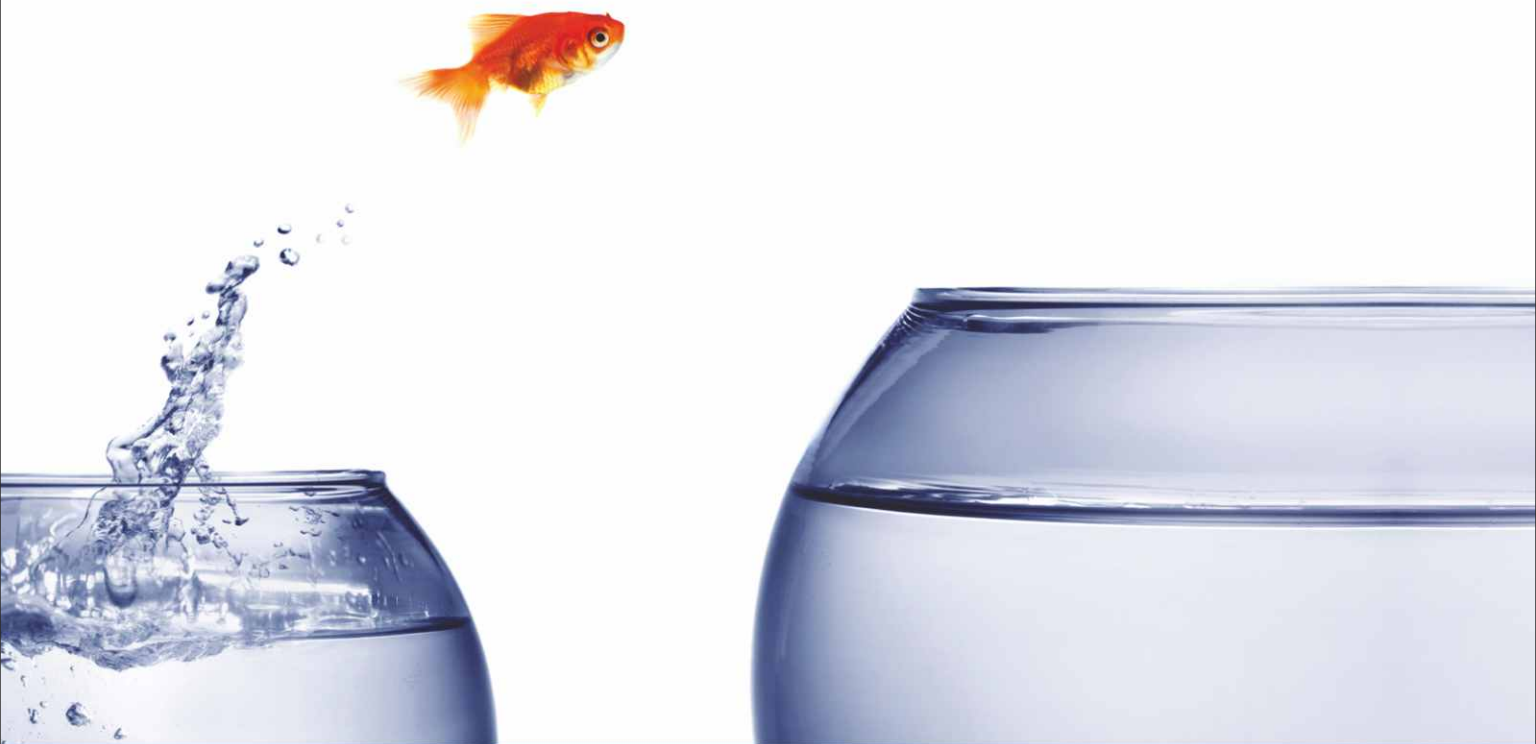
RERA: 26 of 2021  
dated: 22.06.2021



habitat  
prime

2 & 3 BHK APARTMENTS  
SECTOR - 99A, GURUGRAM

**Bigger & Better**



PRIME INFRA DEVELOPERS PVT. LTD

PART OF

**conscient**<sup>7</sup>

# Landmark in the making

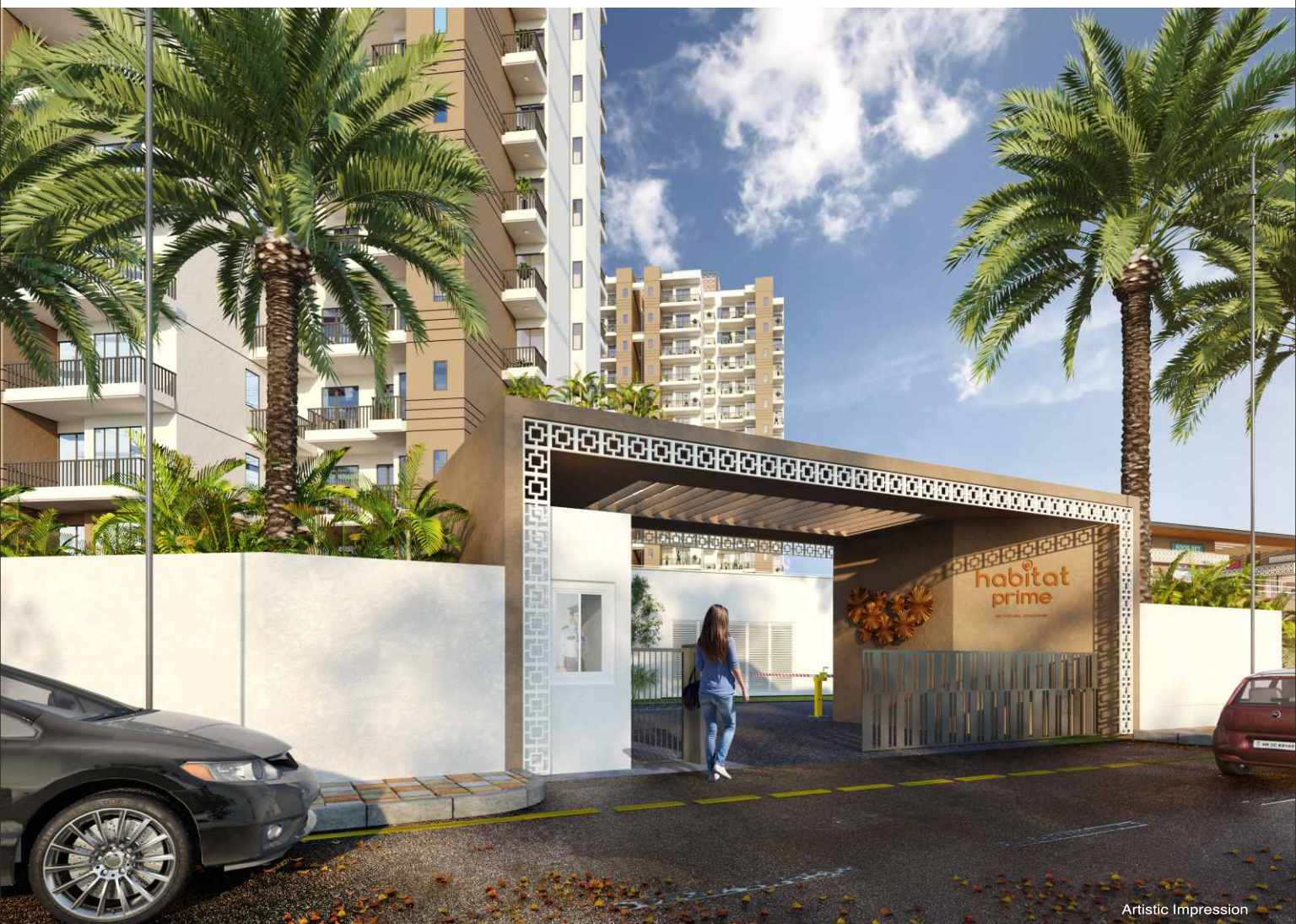


- Located on 75 meter Road of Sector 99A, Gurugram
- 2 minutes drive from Dwarka Expressway & Metro Corridor
- 20 minutes from Cyber City / Diplomatic Enclave (Dwarka)
- 30 minutes from Manesar / KMP Express Highway
- Well connected with IGI Airport & NH-8
- Close proximity to prominent medical facilities
- Renowned schools within the close vicinity



Artistic Impression





# Bigger & Better

**Bigger Rooms, Bigger Dreams, Better Life.**

Life is all about wanting a little more.  
A little more space, a better view, more joy and bigger dreams.

Conscient brings to you Habitat Prime, an affordable home with bigger and better features. Spacious bedrooms, large balconies and expansive landscapes make your life a little more blissful.

Welcome to Habitat Prime.





## Option 1

### 2BHK (TYPE 1)

Size	Carpet Area	Balcony Area
<b>SQ.MTR.</b>	<b>51.274</b>	<b>7.790</b>
<b>SQ.FT.</b>	<b>551.913</b>	<b>83.856</b>
<b>₹ 22,49,581/-</b>		
<b>Booking Amount : ₹ 1,12,479/-*</b>		



Disclaimer: This does not constitute a legal offer. All areas, dimensions, prices and specifications etc. are subject to change till final completion of the project. Soft furnishing, cupboards, furniture and gadgets are not part of the offering. \*Terms & Conditions Apply. GST, Govt Taxes & Levies, Registration charges, Stamp Duty etc. are additional and as applicable.  
1 Square Meter = 10.764 Square Feet | 1 Foot = 0.3048 Meter





## Option 2

### 2BHK (TYPE 2)

Size	Carpet Area	Balcony Area
<b>SQ.MTR.</b>	<b>51.388</b>	<b>9.556</b>
<b>SQ.FT.</b>	<b>553.140</b>	<b>102.86</b>
<b>₹ 22,62,562/-</b>		
<b>Booking Amount : ₹ 1,13,128/-*</b>		



Disclaimer: This does not constitute a legal offer. All areas, dimensions, prices and specifications etc. are subject to change till final completion of the project. Soft furnishing, cupboards, furniture and gadgets are not part of the offering. \*Terms & Conditions Apply. GST, Govt Taxes & Levies, Registration charges, Stamp Duty etc. are additional and as applicable.  
1 Square Meter = 10.764 Square Feet | 1 Foot = 0.3048 Meter

# Option 3

## 2BHK+UTILITY

Size	Carpet Area	Balcony Area
SQ.MTR.	59.999	9.555
SQ.FT.	645.829	102.85
₹ 26,33,317/-		
Booking Amount : ₹ 1,31,665/-*		



Disclaimer: This does not constitute a legal offer. All areas, dimensions, prices and specifications etc. are subject to change till final completion of the project. Soft furnishing, cupboards, furniture and gadgets are not part of the offering. \*Terms & Conditions Apply. GST, Govt Taxes & Levies, Registration charges, Stamp Duty etc. are additional and as applicable.  
1 Square Meter = 10.764 Square Feet | 1 Foot = 0.3048 Meter

# Option 4

## 3BHK UNIT

Size	Carpet Area	Balcony Area
SQ.MTR.	60.00	9.132
SQ.FT.	645.840	98.30
₹ 26,32,510/-		
Booking Amount : ₹ 1,31,625/-*		



Disclaimer: This does not constitute a legal offer. All areas, dimensions, prices and specifications etc. are subject to change till final completion of the project. Soft furnishing, cupboards, furniture and gadgets are not part of the offering. \*Terms & Conditions Apply. GST, Govt Taxes & Levies, Registration charges, Stamp Duty etc. are additional and as applicable.  
1 Square Meter = 10.764 Square Feet | 1 Foot = 0.3048 Meter



# Project amenities & features

## OUTDOOR FACILITIES:

- Badminton Court & Basketball Court (Half)
- Kid's Play Area & Crèche
- Yoga/Meditation Area
- Senior Citizen's Gazebo
- Central Green Sitting Area
- Cricket Practice Nets
- Shopping Complex/Restaurant
- Community Hall

## INDOOR FACILITIES:

- Cards Tables
- Board Games & Books
- Table Tennis & Pool Table



## Low Thermal Conductivity



Use material like RCC wall, with lower thermal conductivity and use of high SRI materials on roof reduces the heat load of the building. This reduces the HVAC demand and operational cost.

## High Performance Glass



High performance single glazed unit for window and door glass. These glass have good daylight factor whereas very low solar heat Gain factor. This increases the daylight in residential unit whereas the reduced solar heat gain factor reduced the heat load.

## Low Flow Water Fixture



Habitat has installed low flow water fixtures in kitchen and restrooms reducing the portable water demand for domestic purpose.

## Waste Segregation



Habitat prime will install post occupancy waste bins on each floor as well as in common area. The waste will be segregated at the house level and then will be stored in common area from where it will be diverted to the waste recyclers.

## Use of Recycled & Regionally Available Materials



Recycle material reduces the demand of virgin materials. This minimizing the ill impact on our natural resources. Regionally procured materials supports the regional economy and reduces the environmental impacts resulting from transportation.

## Energy Efficient Lighting



Energy efficient lower lighting power density in common areas. This reduces the overall energy consumption of the building.

## Electric Charging Point



Habitat prime is providing electrical charging points in the parking area to charge the electric vehicles.

## Natural Daylight and Fresh Air



Each residential unit has optimized window to carpet area ratio for sufficient cross ventilation and fresh air. Ample daylight and fresh air in each residential unit gives healthy work environment to the occupants, thus increases their productivity.

## Low VOC Paint



Use of low VOC, adhesives, sealants, primers, coatings etc. to reduce the ill effect of the gases ejected by these products.

## Rain Water Harvesting



Minimizing the storm-water runoff leaving the project site boundary by installing on-site rain water harvesting tank to capture the rainwater.

## Renewable Power supply



Solar PV will be installed for renewable power to cater the common area load.

## Native Vegetation



Maximum usage of draught tolerant, low water consuming native vegetation to reduce the irrigation water requirements.

## Sewage Treatment Plant



Reduce the demand of potable water by treatment of sewage water and reuse treated water in flushing, landscaping and cleaning.

## Shading Elements of Building Openings



By shading the window, heat gain by solar radiation is reduced. This minimizes the demand of cooling energy.

# About the company

At Conscient, we aim to create what we uniquely can give to the world, not just buildings or homes, but a lifestyle that epitomizes soulful living. Getting the basics of creation right, upholding high standards of delivery and reliability, and creating more value than profits has helped us achieve what we most believe in - Excellence.

This belief, in conjunction with extensive planning and meticulous designing has so far helped us in delivering over ~ 11,000 homes across Delhi-NCR, Dehradun & Goa in the last 4 decades.

In pursuit of excellence, Conscient has partnered with world-renowned architects, designers and consultants, currently helping the company transform over 5 million square feet of space into world class Premium Condominiums, Luxury Villas, Institutional, Commercial/Retail and Value Housing.

**conscient**<sup>7</sup>

**4 DECADES**  
OF EXPERIENCE

**~11,000 HOMES**  
DELIVERED

**5 MILLION+SQ.FT.**  
UNDER DEVELOPMENT

## RECENTLY DELIVERED PROJECTS



HERITAGE ONE - GURUGRAM



HERITAGE MAX - GURUGRAM



ARBOREA - DEHRADUN



INFINITI BAY - GOA



CONSCIENT ONE - GURUGRAM



CALEM GROVE - GOA

## UNDER CONSTRUCTION PROJECTS



ELEVATE - GURUGRAM



HABITAT RESIDENCES - FARIDABAD



HABITAT 78 - FARIDABAD

For further information contact: