

## Project Location Map



**Site office:**  
**Haridwar Greens**  
 Near Jawahar Navodaya Vidyalaya, Roshnabad  
 Haridwar- 249402

**Alakhanda**, NH-58, Near Patanjali Yogpeeth,  
 Adjacent to Crystal World, Haridwar

**Registered Office:**  
 E-2, Qutab Hotel Complex  
 Shaheed Jeet Singh Marg, New Delhi - 110016  
 CIN: U70109DL2006PLC152383 | E: info.hrl@herorealty.in  
 Website: www.herohomes.in

**Corporate Office:**  
 264, Ground Floor, Okhla Industrial Estate, Phase- III,  
 New Delhi- 110020.  
 Tel: + 91 11 47467000  
 Fax: +91 11 47467070

CIN No. U70109DL2006PTC152383

**Home Loan available:**

Loans at the sole discretion of relevant banks.



**Disclaimer:**  
 Specifications and layout plans are subjects to change without prior notice. • Interior designing relates to the internal space planning in the apartments and does not imply the inclusion of furniture and fixtures  
 • The contents of this brochure are purely conceptual and do not represent in any manner a legal offering or promise. The plans shown in this brochure are schematic.  
 The company reserves the right to change/modify the layout/offering/specifications at its sole discretion.

All prices shown are based on BSP (Basic Selling Price). Add on charges & other taxes / fees are extra as applicable.  
 1Sq. Yard=0.836 Sq. Meter. 1Sq. Meter=10.764 Sq. feet. Conditions apply. \*Approximate distance. \*Subject to availability.

RERA Number: UKREP01190000211



## Welcome to Haridwar Greens

It makes for a happy home when peace and tranquillity join together.  
 And if that home is situated in Devbhoomi Haridwar, it makes the feeling  
 of being blessed everlasting. Move into your own celestial abode today.

Actual site image  
 Haridwar Greens



**Exclusive Clubhouse Operational:**  
 Swimming Pool, Health Club & Multi-Game Floor,  
 Proposed-Restaurant, Coffee Shop + Bar, Poolside Banquet

- 600 + families are residing at Haridwar Greens
- Ongoing education of more than 1000 + students in BML Munjal Green Meadows School



[www.herohomes.in](http://www.herohomes.in) | SMS HERO TO 56767 | 09266444666



# Haridwar Greens Master Plan

- 1 School
- 2 Premium Club House
- 3 Proposed Nursing Home
- 4 Shopping Mart

## Township Features:

- 75% Open and Green Area
- Gated complex with 2 tier Security
- 100% Power Backup
- 24 - Hours Water Supply
- ATM
- BML Munjal Green Meadows School already operational
- Upcoming Nursing Home
- Shopping Complex
- Premium club with Swimming Pool

- Haridwar Greens
- Utkarsh Plots Phase-I
- Utkarsh Plots Phase-III
- Holiday Homes

## Distance Chart#:

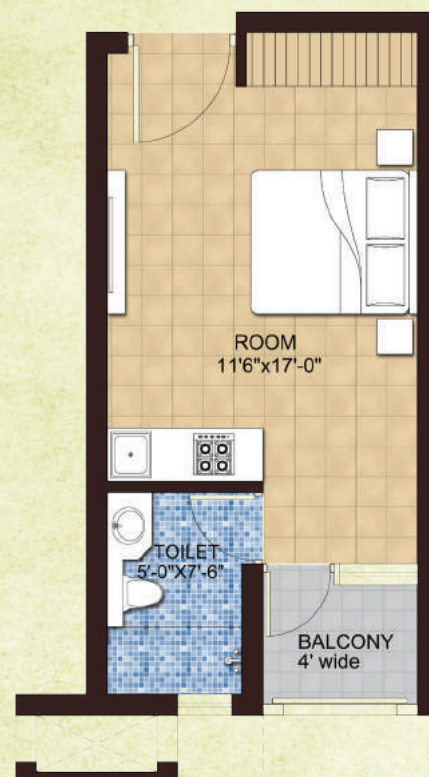
- |                            |           |
|----------------------------|-----------|
| • SIDCUL                   | - 1 Km    |
| • District Courts          | - 3 Kms   |
| • Bahadrabad Junction      | - 9 Kms   |
| • Ranipur Mor              | - 13 Kms  |
| • Patanjali Yogpeeth       | - 14 Kms  |
| • Haridwar Railway Station | - 15 Kms  |
| • Har Ki Pauri             | - 17 Kms  |
| • Jolly Grant Airport      | - 51 Kms  |
| • Dehradun                 | - 67 Kms  |
| • Delhi                    | - 213 Kms |

# Approximate distance.



# **holiday homes** HARIDWAR

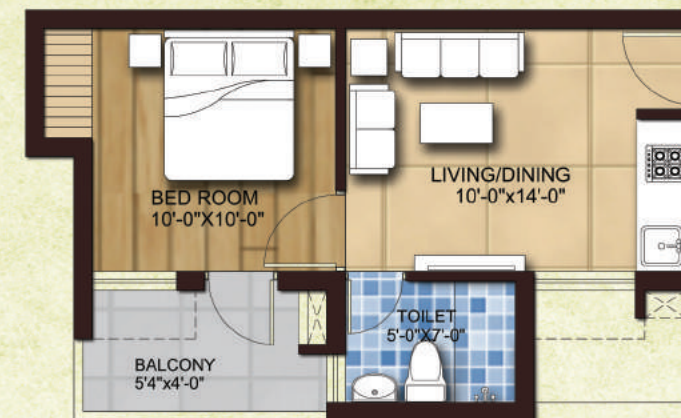
Studios & 1/2/3 BHK homes  
at Haridwar Greens



STUDIO

Carpet Area	Built up Area	Super Area
239.2 sq. ft.	315.8 sq. ft.	365 sq. ft.

\*1 sq. mtr. = 10.764 sq. ft.



1 BHK

Carpet Area	Built up Area	Super Area
285.7 sq. ft.	367.2 sq. ft.	485 sq. ft.

\*1 sq. mtr. = 10.764 sq. ft.



2 BHK

Carpet Area	Built up Area	Super Area
547.0 sq. ft.	654.5 sq. ft.	775 sq. ft.

\*1 sq. mtr. = 10.764 sq. ft.



2 BHK

Carpet Area	Built up Area	Super Area
697.3 sq. ft.	919.7 sq. ft.	1075 sq. ft.

\*1 sq. mtr. = 10.764 sq. ft.



3 BHK

Carpet Area	Built up Area	Super Area
943.8 sq. ft.	1225.4 sq. ft.	1410 sq. ft.

\*1 sq. mtr. = 10.764 sq. ft.



Actual Image of Holiday Homes Towers





Actual Site Image



**Haridwar Greens**

2/3 BHK, 3 BHK Deluxe  
Apartments and Penthouses  
adjoining SIDCUL

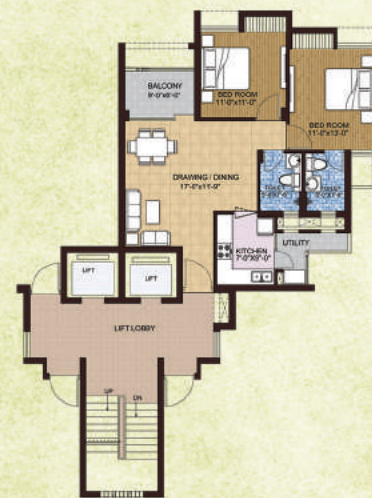
## Floor Plans



AMOLA 3 BHK

Carpet Area	Built up Area	Super Area
982.11 sq. ft.	1283.28 sq. ft.	1484 sq. ft.

\*1 sq. mtr. = 10.764 sq. ft.



AMOLA 2 BHK

Carpet Area	Built up Area	Super Area
719.47 sq. ft.	951.54 sq. ft.	1081 sq. ft.

\*1 sq. mtr. = 10.764 sq. ft.



TARIKA 3 BHK

Carpet Area	Built up Area	Super Area
1081.46 sq. ft.	1423.32 sq. ft.	1700 sq. ft.

\*1 sq. mtr. = 10.764 sq. ft.



**utkarsh**

live the Zen lifestyle  
—Plots at Haridwar Greens—

**114 Sq. yards onwards\*\***  
**Premium plots with exclusive**  
**lifestyle features in Haridwar**  
**₹ 21.5 lakh onwards\***

### Exclusive features:

Utkarsh enjoys all the features of Haridwar Greens township and comes in addition with some exclusive features like:

- Thematic gardens with an exclusive Zen garden with Lotus ponds & fountains
- Yoga and Spa center to promote holistic living
- Meditation huts & white stone walking paths