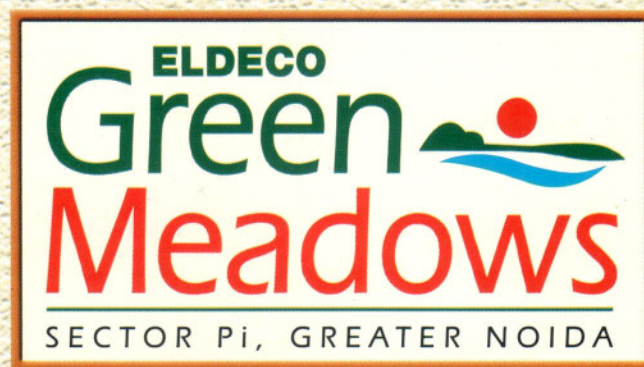


Before Launch
dt- 17-04-2004



*Welcome aboard Green Meadows.
Maharaja Class Living!*



Living at its best

M

MAHARAJA LIVING IS BACK!

Live life Maharaja style now. Amidst 22 acres of lush green nature. At Eldeco Green Meadows. Where you'll find the Maharaja class living, laced with all the lavish amenities like super plush country club, premium shopping complex-Arcadia, and neighbours you will love to spend time with.



An artistic impression

Be it the rich specifications, the innovative features or the thoughtful emphasis on open space, every aspect of Eldeco Green Meadows has class written all over it. At Eldeco Green Meadows you get the complete lifestyle. Prime location, open spaces, beautiful parks - everything which makes you feel like a Maharaja. 365 days a year, forever.

Open spaces for clean and green environment

Eldeco Green Meadows will have unmatched greenery and lots of open spaces because of the unique OSBS(open space vs. built up space) advantage. A concept pioneered by Eldeco. To provide you that extra space.



Lavish features

- A combination of low (Ground + 3 floors) and high rise apartments with choice of premium 2, 3 and 4 bedroom apartments.
- Private lawns on ground floor units, terraces and private terrace garden on second/third floor units.
- Large, airy rooms with practical floor layout and maximum space utilization.
- Super plush club facilities at Eldeco Country Club.
- Premium shopping complex - Eldeco Arcadia in close vicinity.
- Extensive greenery - Japanese Garden, Mughal Garden and Rotary Park.
- Rich specifications, large windows and wardrobe spaces, extensive parking space.
- 100% power backup.
- Immaculate round the clock security - Guards on patrol, CCTV on main gate and strategic points, video phone for regulated entry into the complex.
- Children creche.

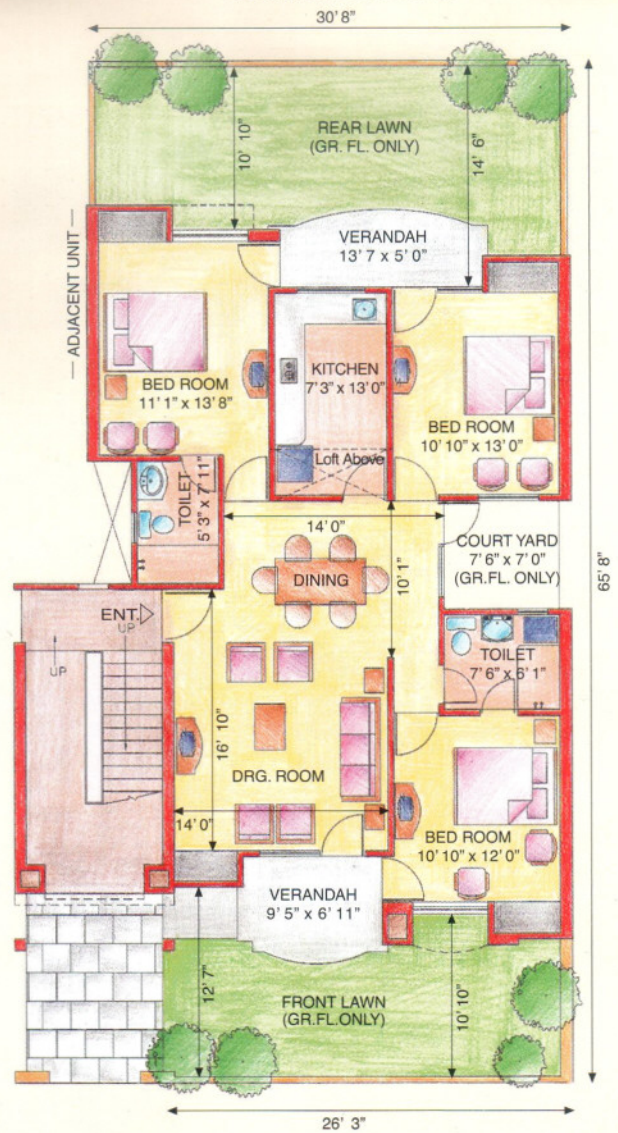
Savannah

FLOOR PLANS

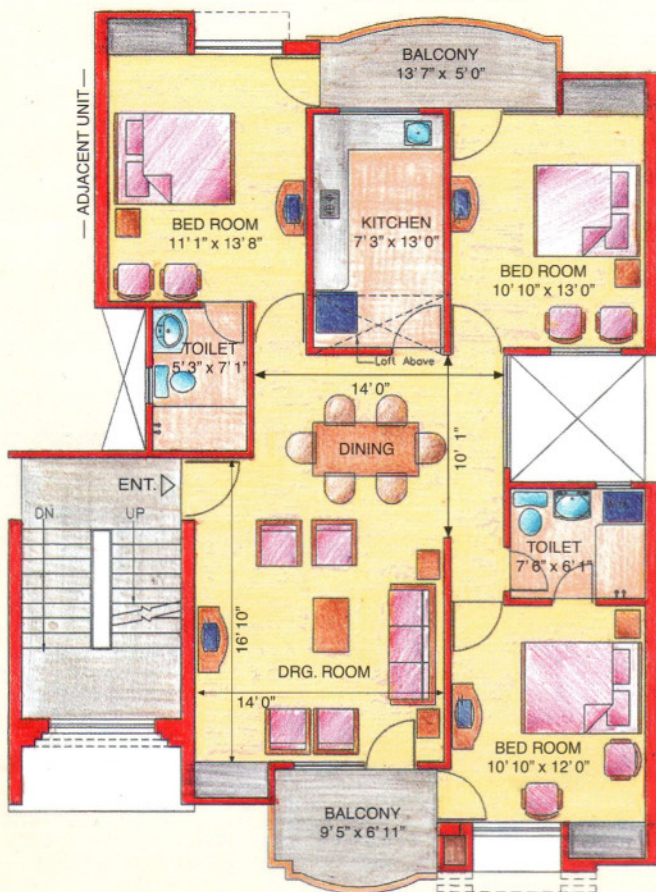
All areas in sq. ft.

Floor	Super Area	Lawn	Terrace	Roof Terrace Garden
GF	1330	580	-	-
FF	1330	-	-	-
SF	1330	-	-	-
TF	1045	-	295	900

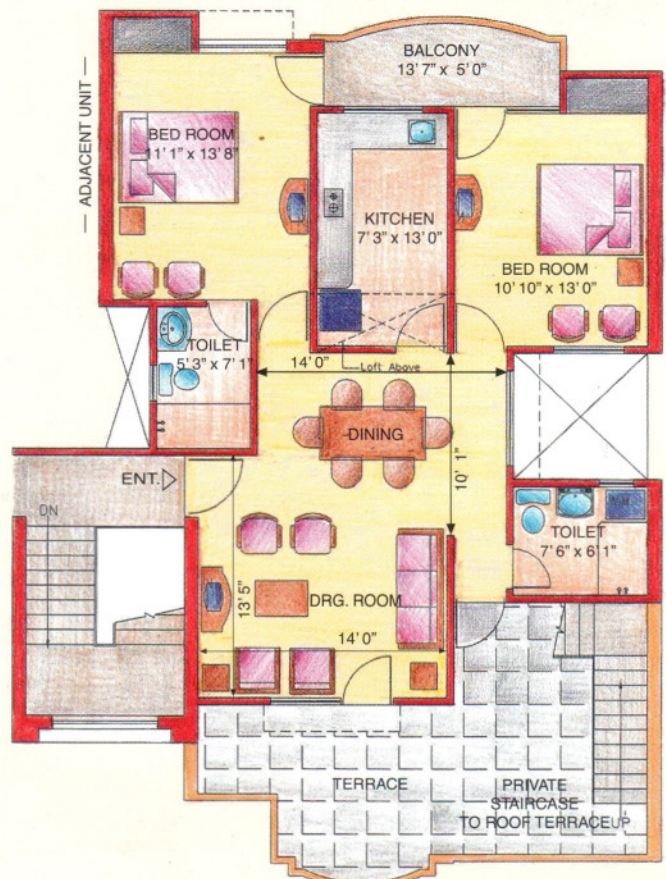
Ground/First Floor Plan



Second Floor Plan



Third Floor Plan



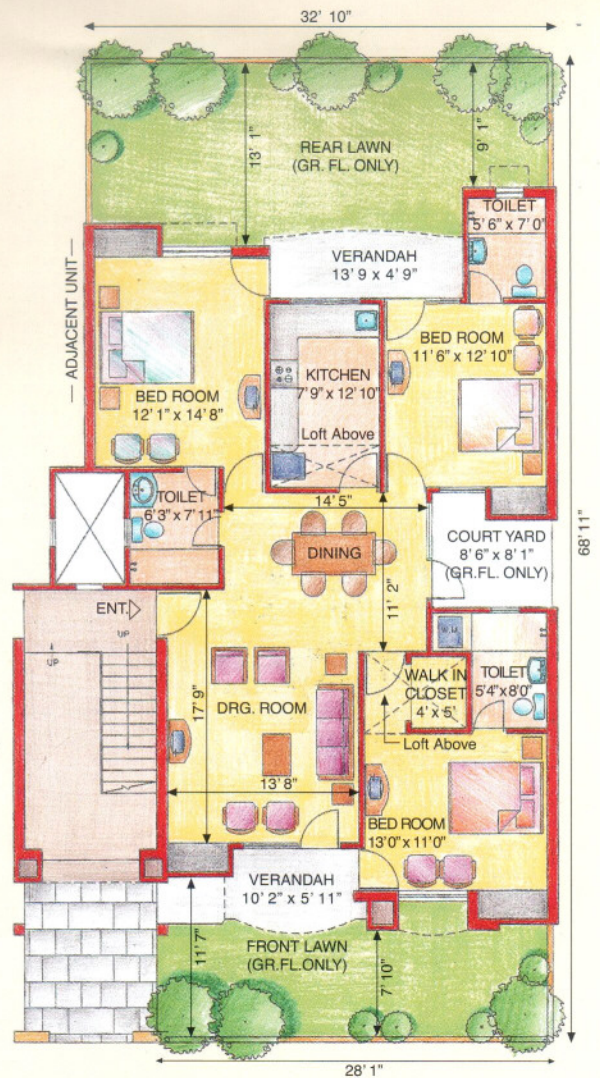
Gardenia

FLOOR PLANS

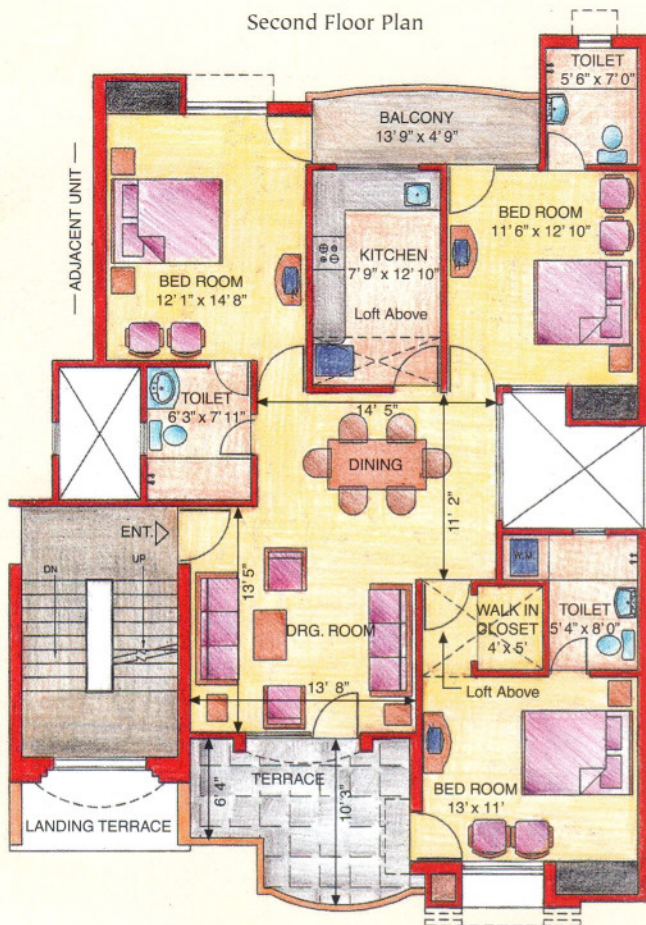
All areas in sq. ft.

Floor	Super Area	Lawn	Terrace	Roof Terrace Garden
GF	1510	640	-	-
FF	1510	-	-	-
SF	1380	-	130	-
TF	1150	-	230	1045

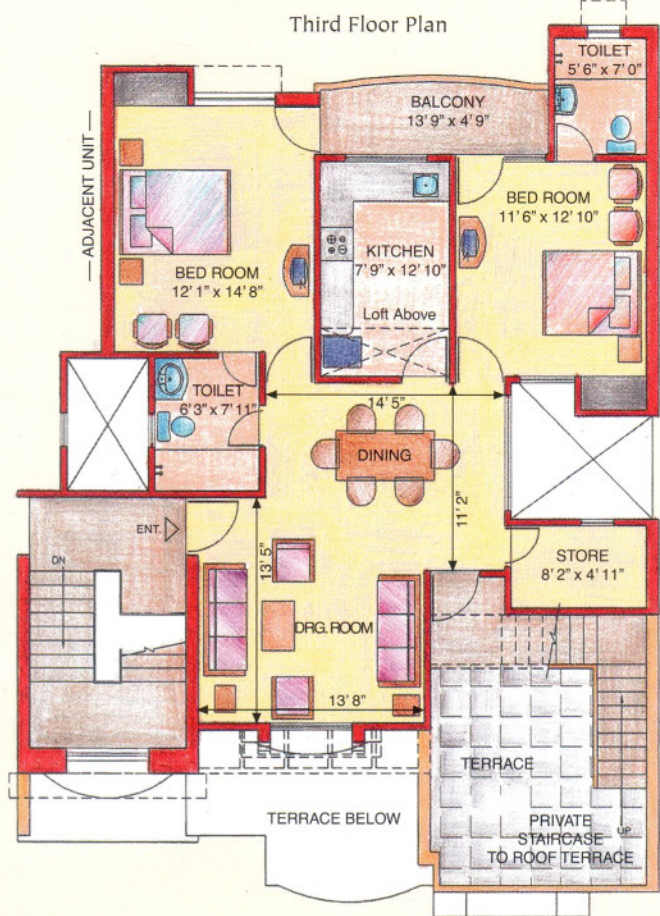
Ground/First Floor Plan



Second Floor Plan



Third Floor Plan



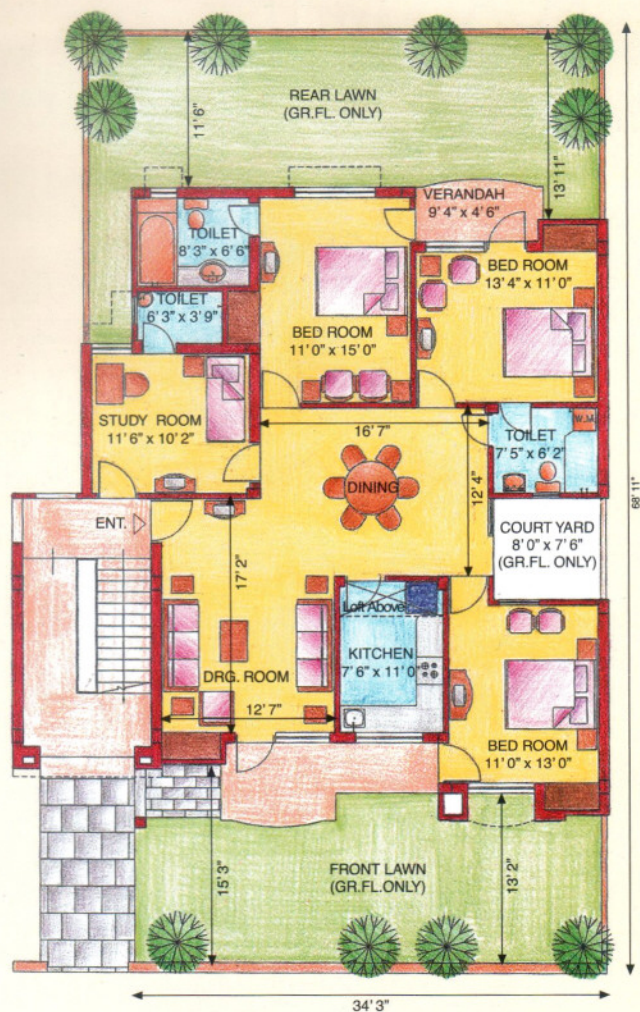
Verdana

FLOOR PLANS

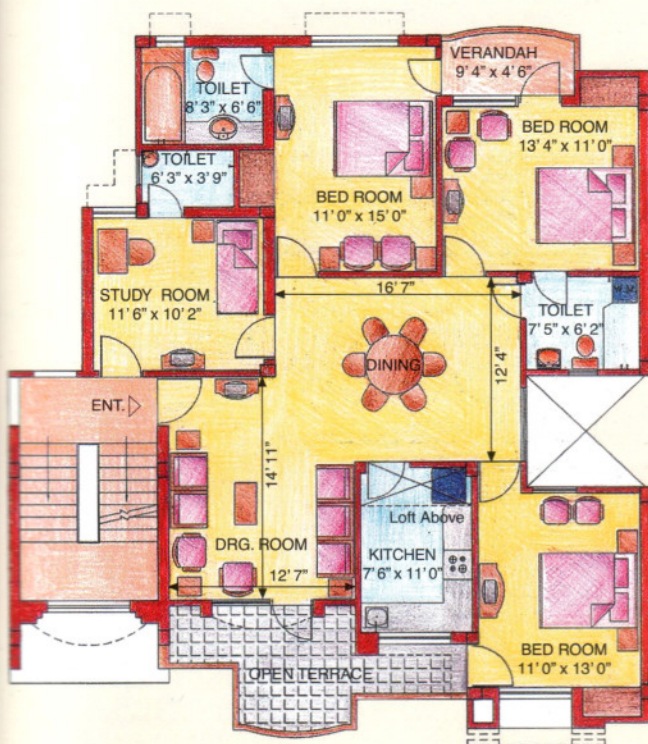
All areas in sq. ft.

Floor	Super Area	Lawn	Terrace	Roof Terrace Garden
GF	1610	910	-	-
FF	1610	-	-	-
SF	1485	-	125	-
TF	1300	-	185	1135

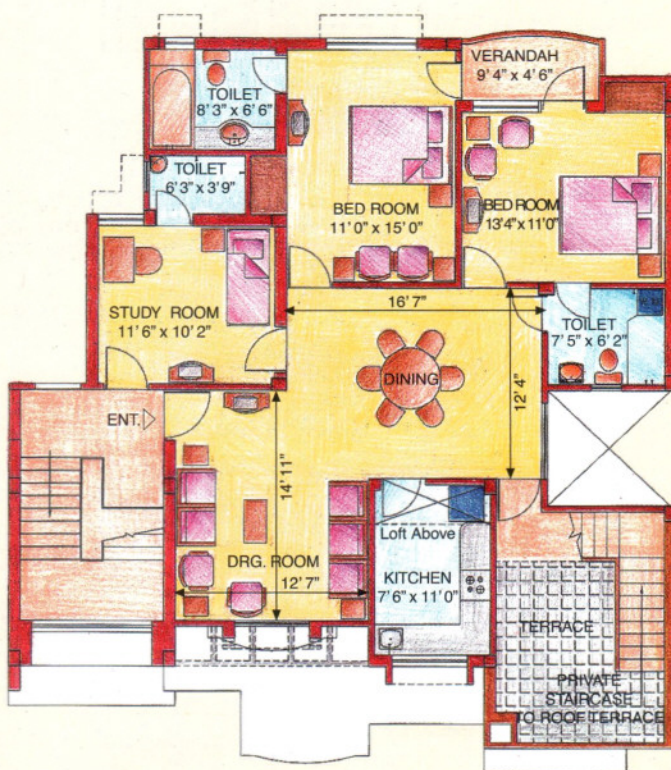
Ground/First Floor Plan



Second Floor Plan



Third Floor Plan



ROAD MAP



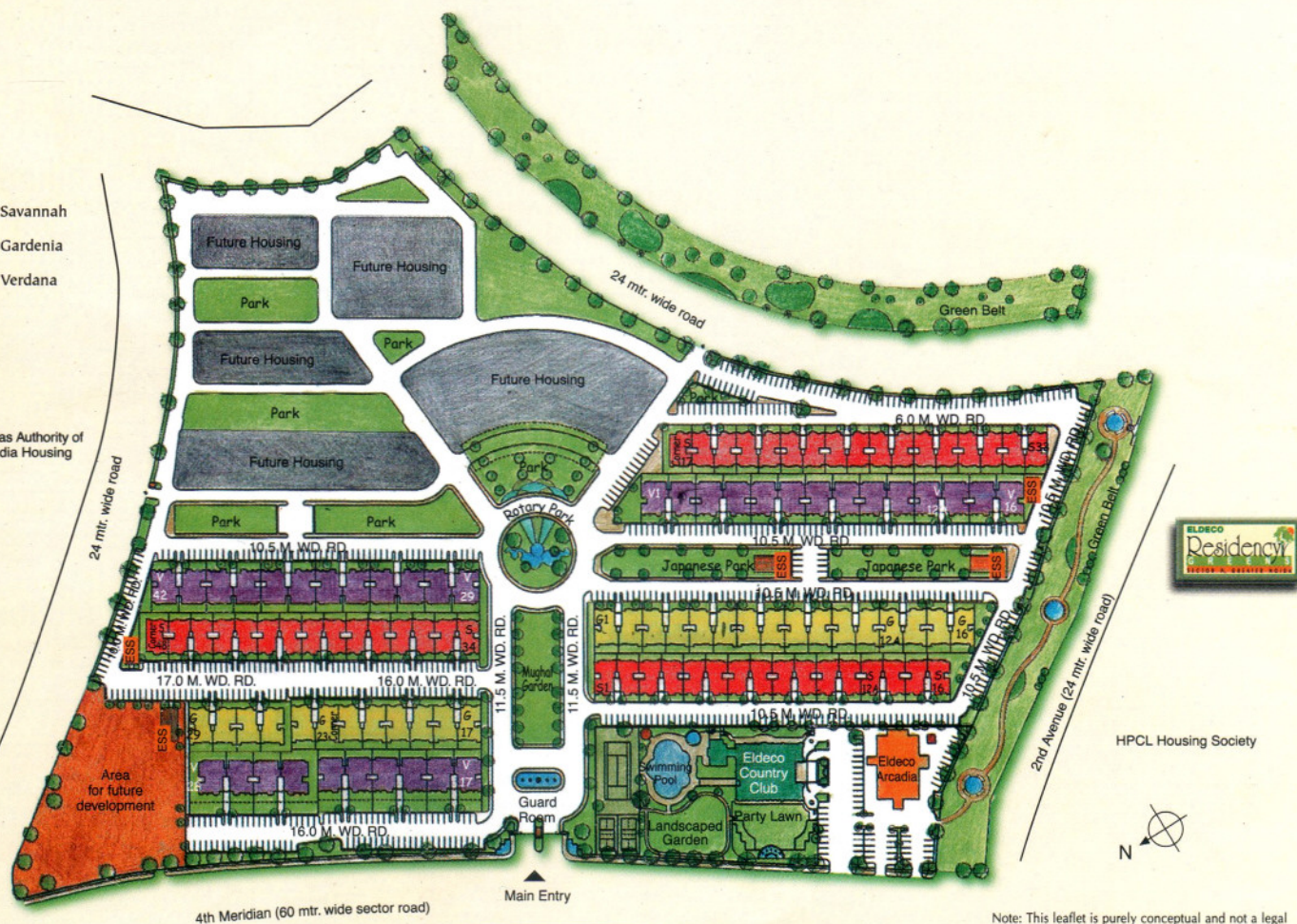
Note: Map is only indicative and not to scale.
Based on information available from GNIDA.



LAYOUT PLAN

- Savannah
- Gardenia
- Verdana

Gas Authority of India Housing



World Class Amusement Park

Note: This leaflet is purely conceptual and not a legal offering. Further, in the interest of maintaining high standards, the company/architect reserves the right to modify any detail/specification/elevation/feature mentioned herein.

L

LIVE LIFE TO THE FULLEST



An artistic impression.

Eldeco Country Club - All your needs for a complete lifestyle are taken care of at the Eldeco Country Club. Recreation and socialising, swimming pool, floodlit tennis & badminton courts, T.T, gym, restaurant, cards room, squash court, banquet hall, party lawns etc.

Eldeco Arcadia - A commercial complex with shops and offices spread over three floors, Eldeco Arcadia will take care of all your shopping for daily requirements. At your door step.



An artistic impression.

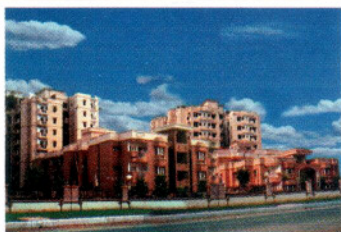
S

SPECIFICATIONS

Flooring: Marble (with granite polish) in bedrooms. Marble/vitrified tile flooring in drawing room/dining room, and kitchen. Marble tiles in balconies. Floor tiles in bathrooms. **Doors/Windows:** Good quality hardwood door frames with polish finish, teak finish commercial flush door shutters. Entrance door with teak finish and decorative beading. Windows with aluminium joinery. One side lamination of toilet doors. **Kitchen:** Black granite top working platform, single-bowl stainless steel sink with drainboard, ceramic glazed tiles (or equivalent) dado 2' above working platform. Kitchen shelves (without any woodwork). **Toilet:** Ceramic (or equivalent) floor tiles, ceramic tiles upto 7' on walls. English WC, Indian WC in study toilet, mirror, soap dish, separate hot and cold water supply (without geyser), good quality C.P. fittings. Counter in Green marble (except in study/servant toilet). **Wall Finish:** Exterior in superior maintenance-free finish, inside walls in oil bound distemper. **Structure:** Earthquake-resistant structure. Combination of RCC frame structure with brick-wall load bearing structure.

Building

bonds of happiness for over 27 years



Eldeco Golf View Apartments,
Sector Omega, Greater Noida



Eldeco Residency Greens,
Sector Pi, Greater Noida



Eldeco Apartments, Vaishali, Ghaziabad



Eldeco Garden Estate,
Off. G. T. Road, Kanpur



Eldeco Magnum Shopping Plaza,
Gomti Nagar, Lucknow



Eldeco Greens, Gomti Nagar, Lucknow

The Eldeco Group was founded in 1975 with the objective to promote a real estate and construction company on the ideals of transparency and sound business ethics. These ideals are still the guiding principles and are the very reason behind the strength of the Group.



In just over 27 years, the Group has shown phenomenal growth and is proud of having over 12,000 satisfied customers. Its total construction spans over 120 lac sq ft on an area of over 470 acres of prime land. It has successfully completed over 77 prestigious projects in Lucknow, Kanpur, Agra and Ghaziabad with 20 more underway, having an aggregate value in excess of Rs. 670 crores.

Today, the Group enjoys market leadership in Lucknow, Kanpur, Agra and now in Greater Noida, in projects as varied as township development, group housing, row housing, serviced apartments as well as commercial and office complexes.

Winner of various national & international awards for excellence, the Group is today vastly recognised for quality of construction, commitment to delivery as well as sound and transparent business practices.



Corporate Off.: SU 12-13, Bhikaiji Cama Bhawan, Bhikaiji Cama Place, New Delhi - 66. Tel.: 51659001, 26160081/82/83, Fax: 26160084.
E-mail: contact@eldecoproperties.com, Website: www.eldecogroup.com **Site Off. (Sun. open):** Eldeco Green Meadows, Sec. Pi, Greater Noida.
Noida Sales Off. (Sun. open): 1st floor, J-43, Sec. 18. Tel.: 2511401/2.